



VINCHIN BACKUP & RECOVERY V5.0

Quick Installation Guide

2019/10

Table of Contents

INSTALLATION INSTRUCTIONS	2
INSTALL ON PHYSICAL SERVER	2
RECORD ISO FILE.....	2
<i>Record to USB Disk Guide</i>	<i>2</i>
<i>Record to CD Guide.....</i>	<i>4</i>
INSTALL BACKUP SERVER	6
INSTALL BACKUP NODE (OPTIONAL)	12
INSTALL ON VMWARE	14
CREATE NEW VIRTUAL MACHINE	14
INSTALL BACKUP SERVER	17
INSTALL BACKUP NODE (OPTIONAL)	25
INSTALL ON XENSERVR.....	27
CREATE NEW VIRTUAL MACHINE	27
INSTALL BACKUP SERVER	32
INSTALL BACKUP NODE (OPTIONAL)	39
INSTALL ON RHV/OVIRT	41
CREATE NEW VIRTUAL MACHINE	41
INSTALL BACKUP SERVER	43
INSTALL BACKUP NODE (OPTIONAL)	43
INSTALL ON SANGFOR HCI	44
CREATE NEW VIRTUAL MACHINE	44
INSTALL BACKUP SERVER	45
INSTALL BACKUP NODE (OPTIONAL)	46
INSTALL ON OTHER PLATFORMS	47
CREATE NEW VIRTUAL MACHINE	47
INSTALL BACKUP SERVER	47
INSTALL BACKUP NODE (OPTIONAL)	47

Installation Instructions

Vinchin Backup & Recovery can be installed on physical server or virtual server. It is integrated with the operating system in the same ISO image file, which can be directly installed without installing any OS first.

Install on Physical Server

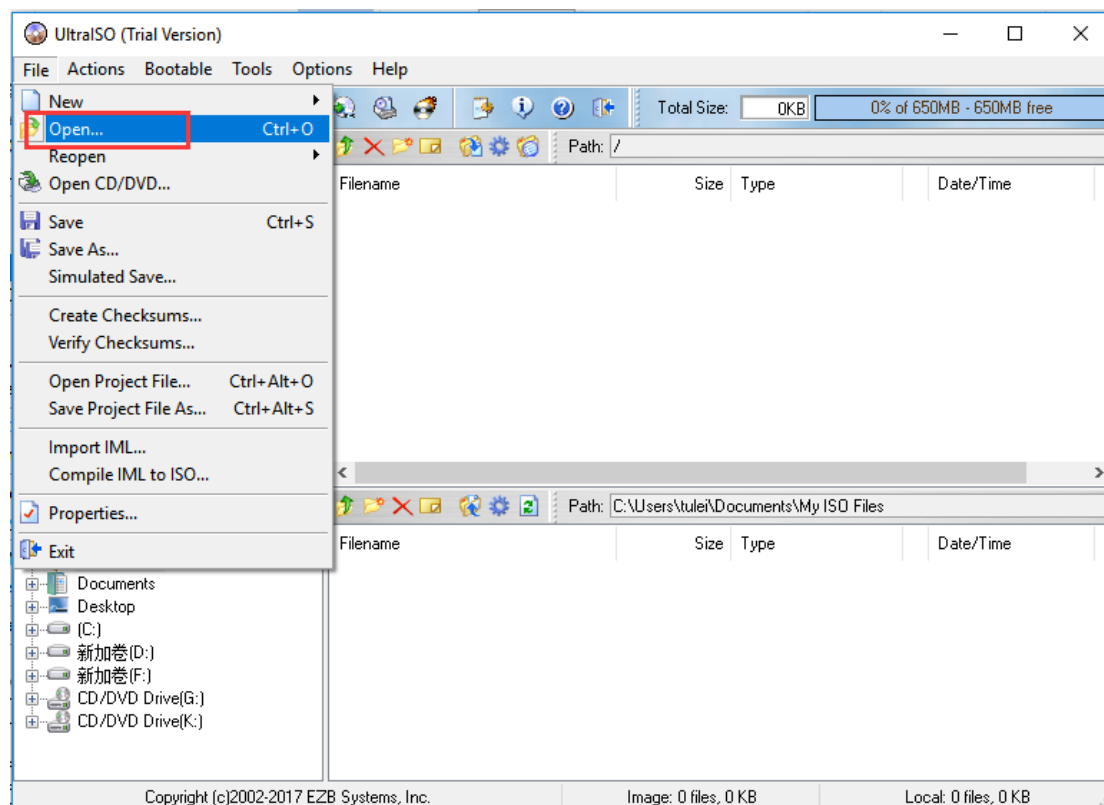
Vinchin backup server can be installed via USB disk or CD. In this installation guide we use UltraISO record tool to record the ISO file.

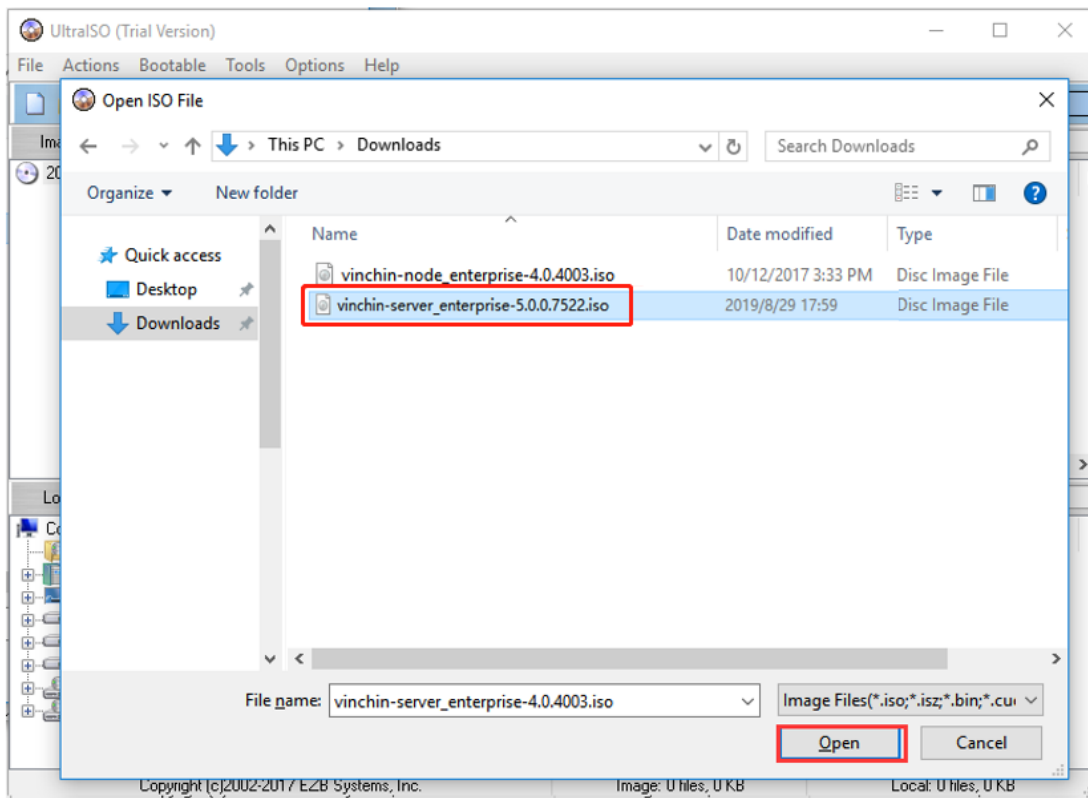
Record ISO File

Vinchin Backup & Recovery can be installed via USB disk or CD. In this installation guide we use UltraISO record tool to record the ISO file.

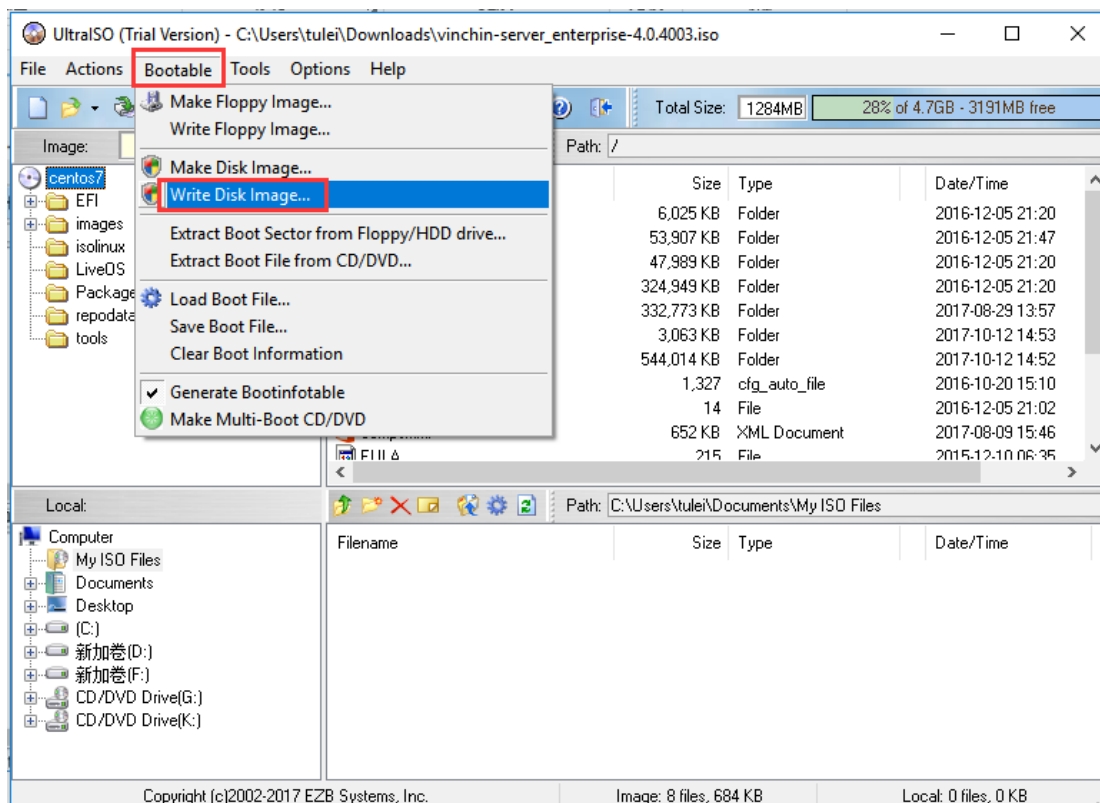
Record to USB Disk Guide

Record the ISO file to USB disk will format the USB disk, please use a non-data USB disk for recording. Connect the USB disk with PC, open the record tool UltraISO. Click **[File] → [Open...]**. Choose Vinchin Backup & Recovery ISO file and click **[Open...]**.

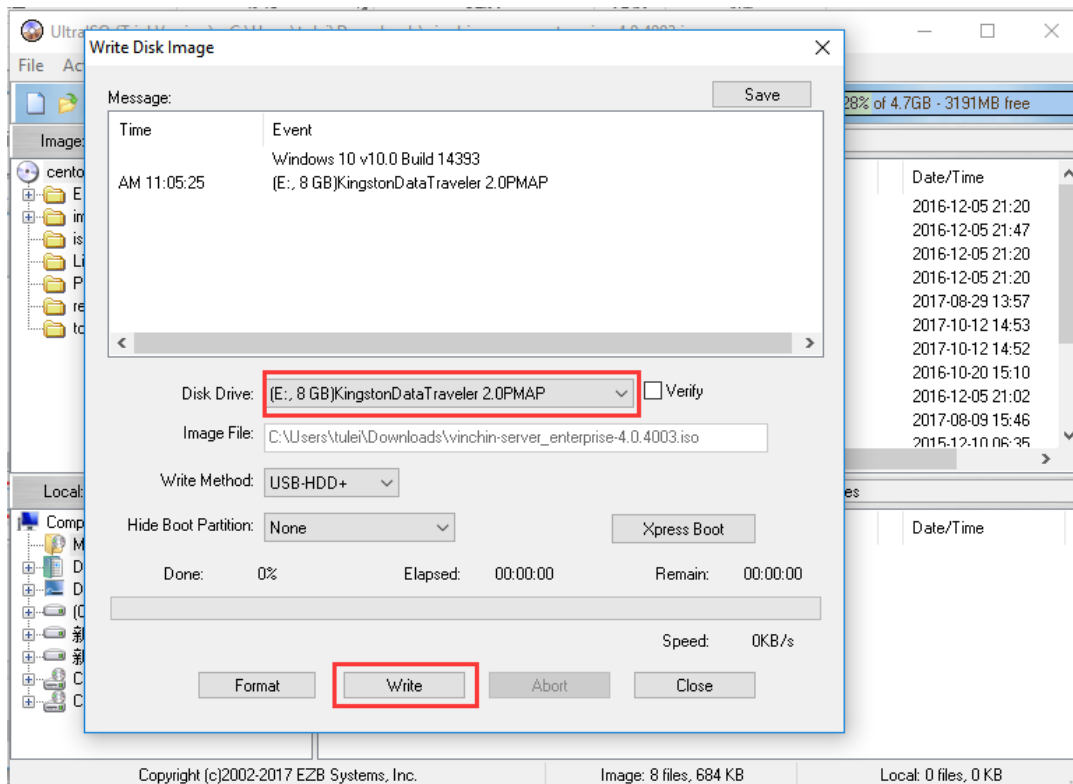




Click **[Bootable]** → **[Write Disk Image...]**



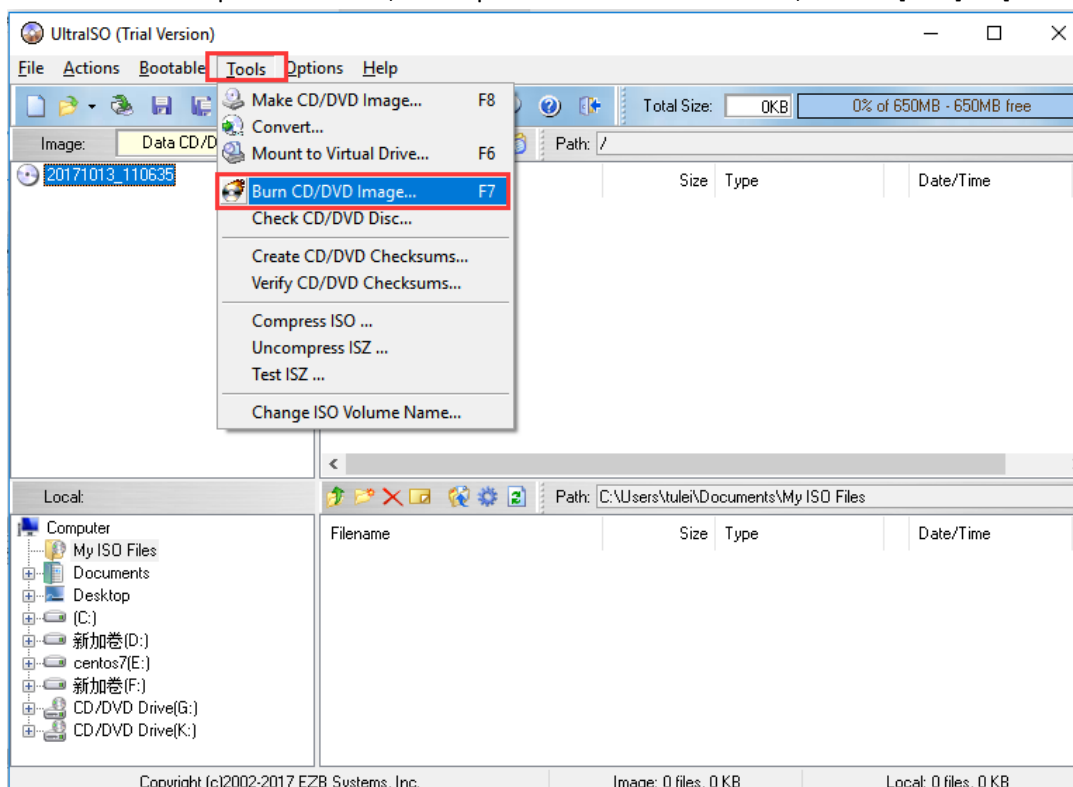
Choose the right USB disk and click **[Write]** to start writing.



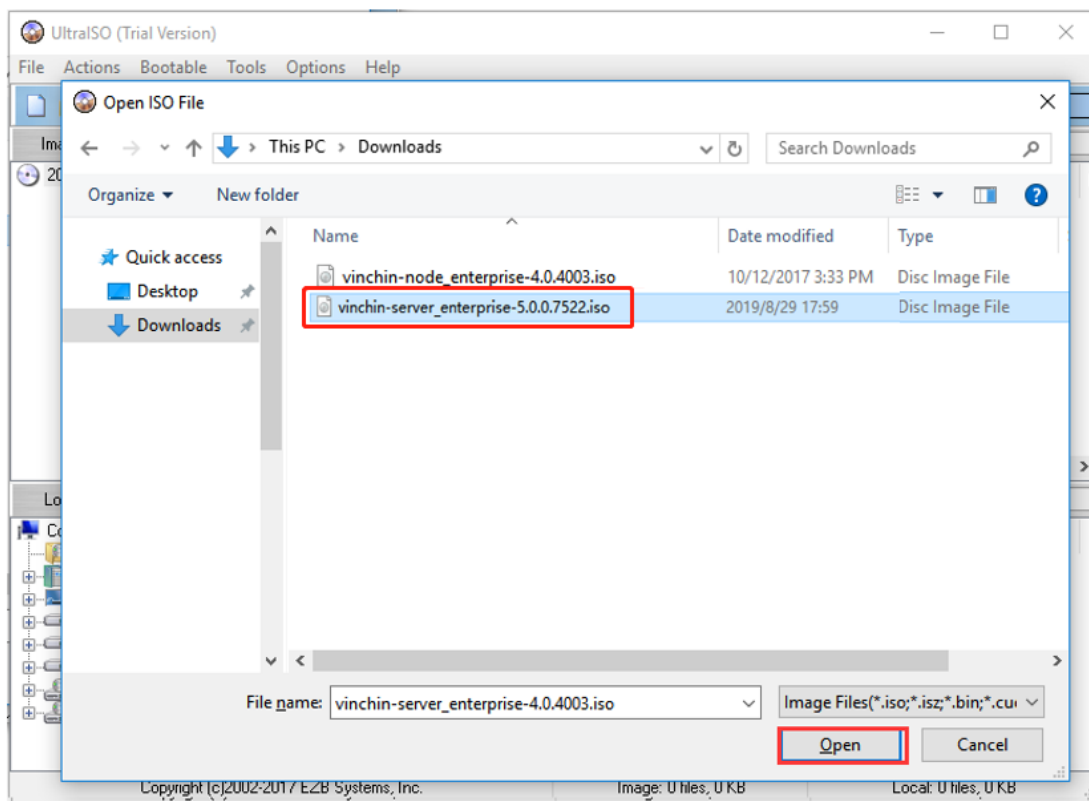
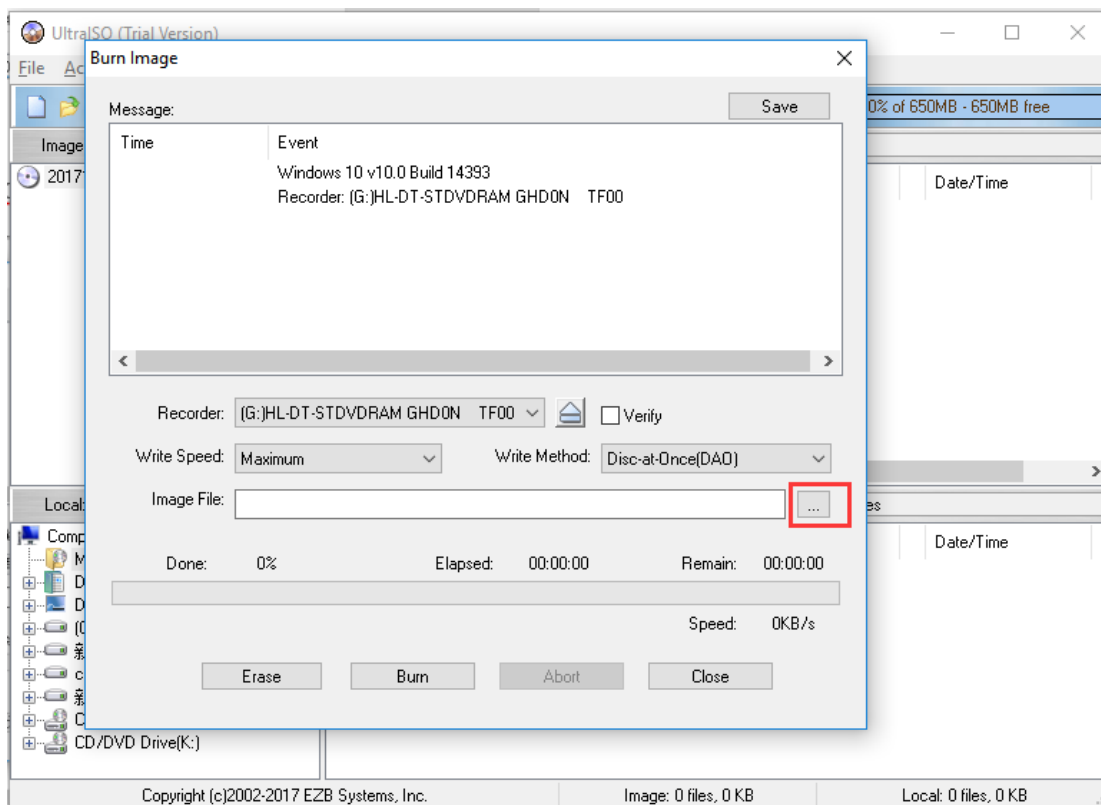
Note: Some of the servers may not identify the installed USB disk, if installation via USB disk is failed, please change to install via CD.

Record to CD Guide

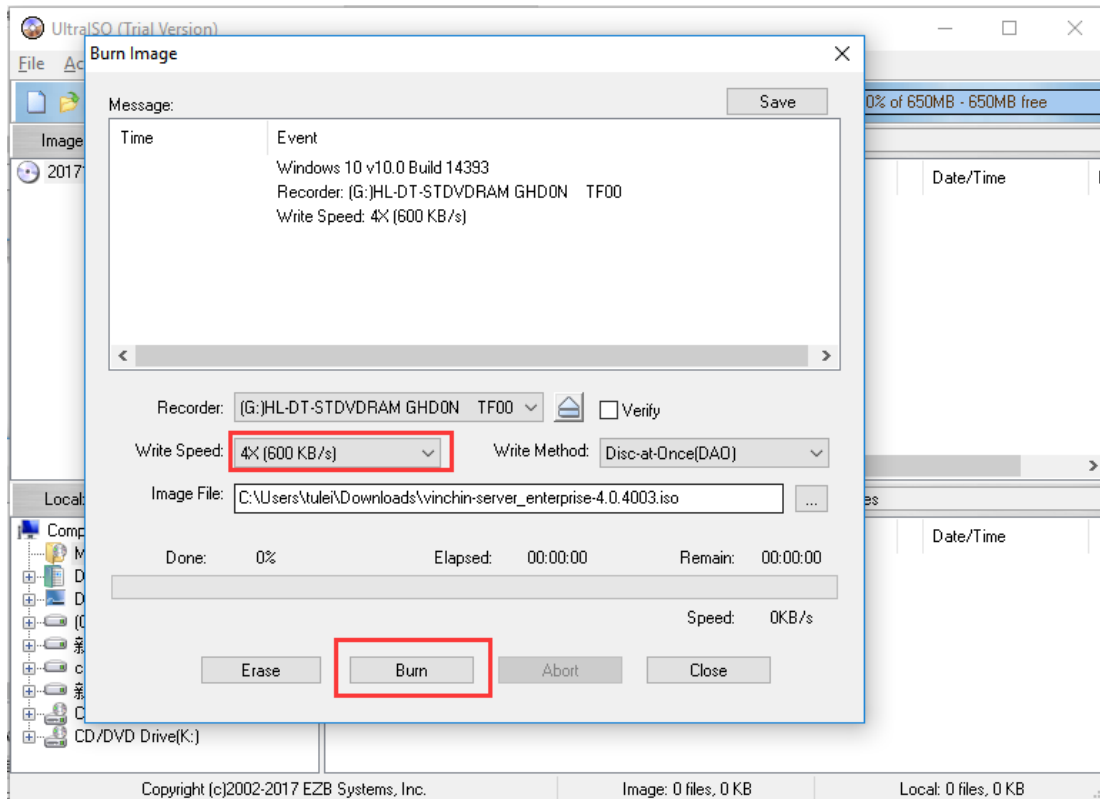
Insert CD into computer CD driver, then open the record tool UltraISO, choose [Tool] → [Burn CD/DVD Image...]



Click “...” to choose Vinchin backup server ISO file and click **[Open]**.



Choose the lowest writing speed, click **[Burn]**.



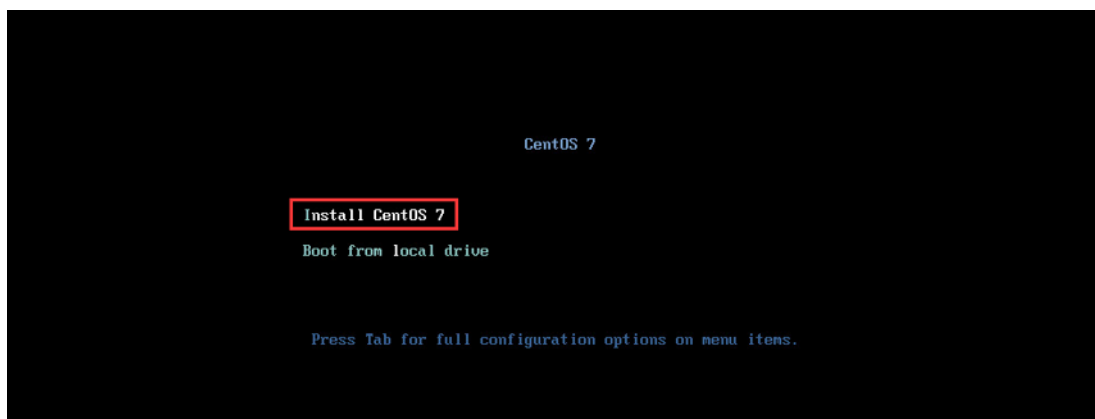
Install Backup Server

Before installing Vinchin backup server, please set the guidance mode of server BIOS as “legacy”, and set the USB disk guide or CD guide as first boot option.

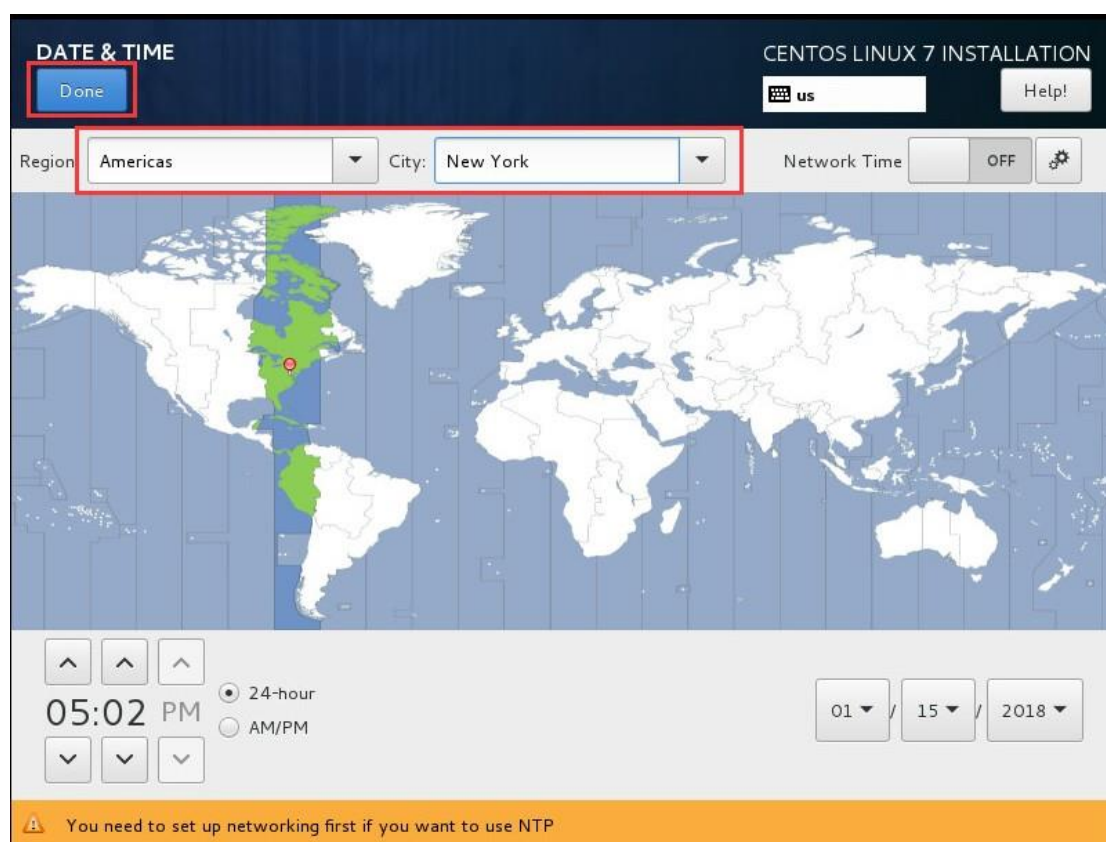
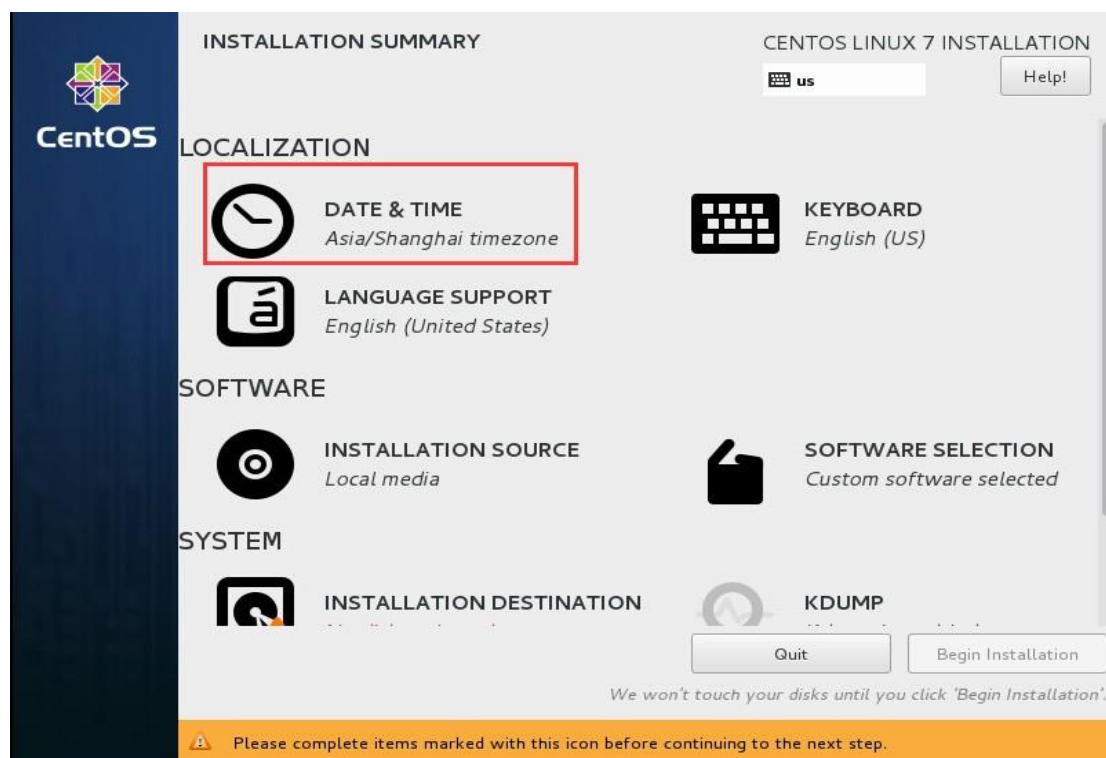
Suggested Server Configuration:

6 Cores CPU, 16GB RAM, Gigabit NIC, 100G system disk, data disk should support partition, local disk, LVM, FC, ISCSI, NFS, CIFS

Choose “**Install CentOS 7**” and press [Enter] button on the keyboard. Then a few seconds later, you will be entering the “**INSTALLATION SUMMARY**” page.

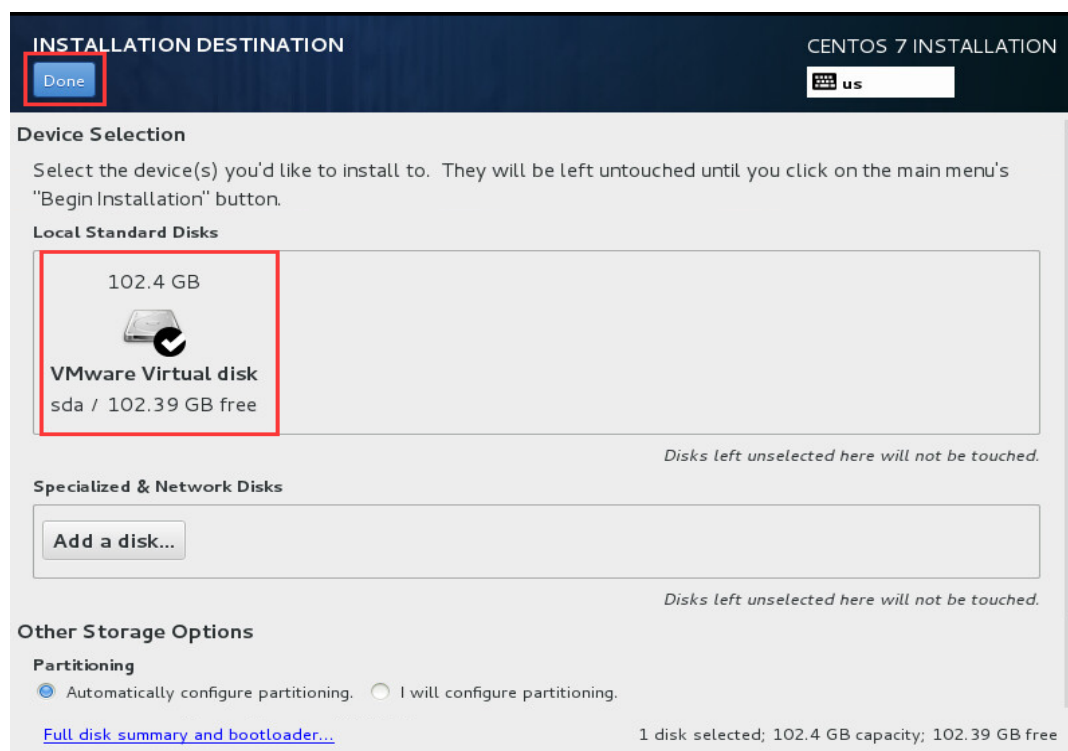
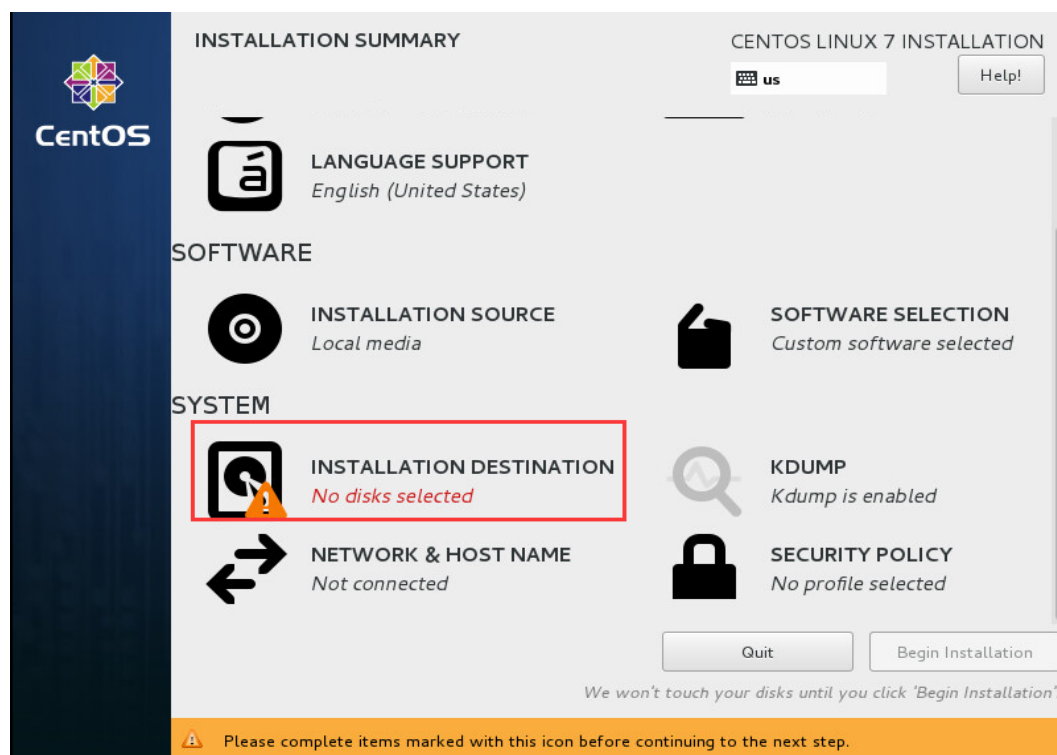


Click **"DATE & TIME"** to set up time for your Vinchin backup server.

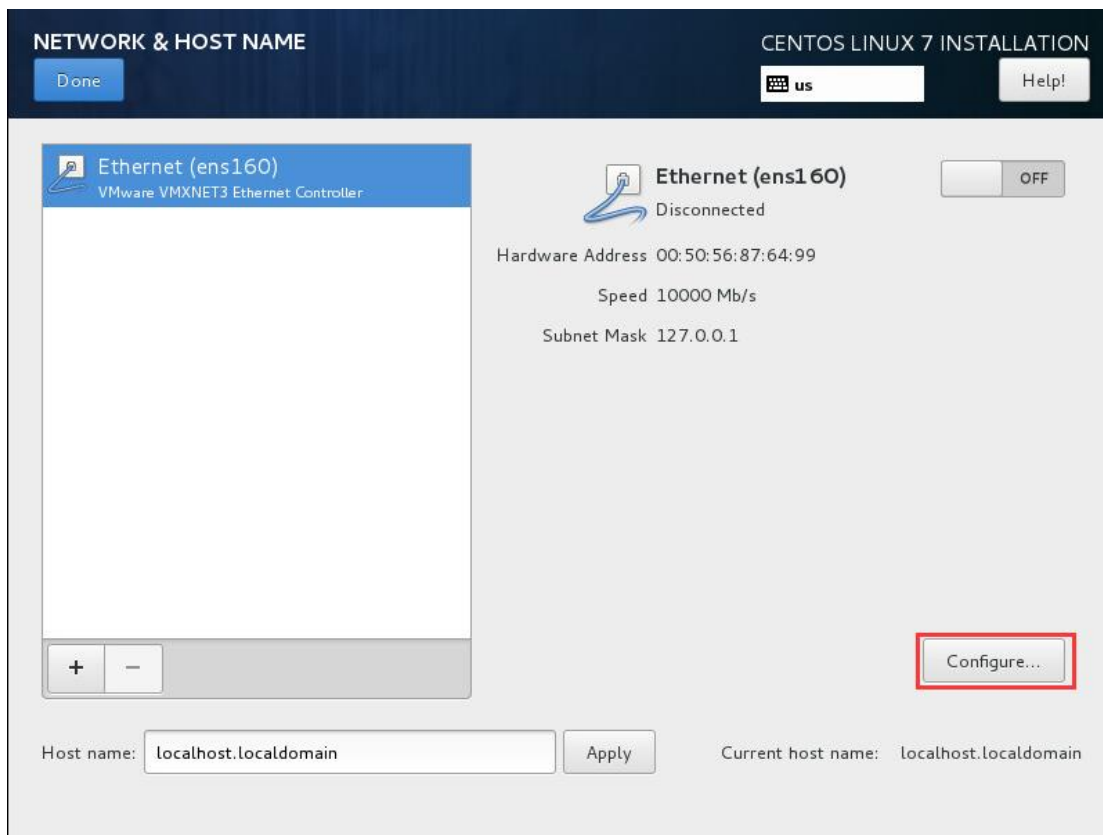
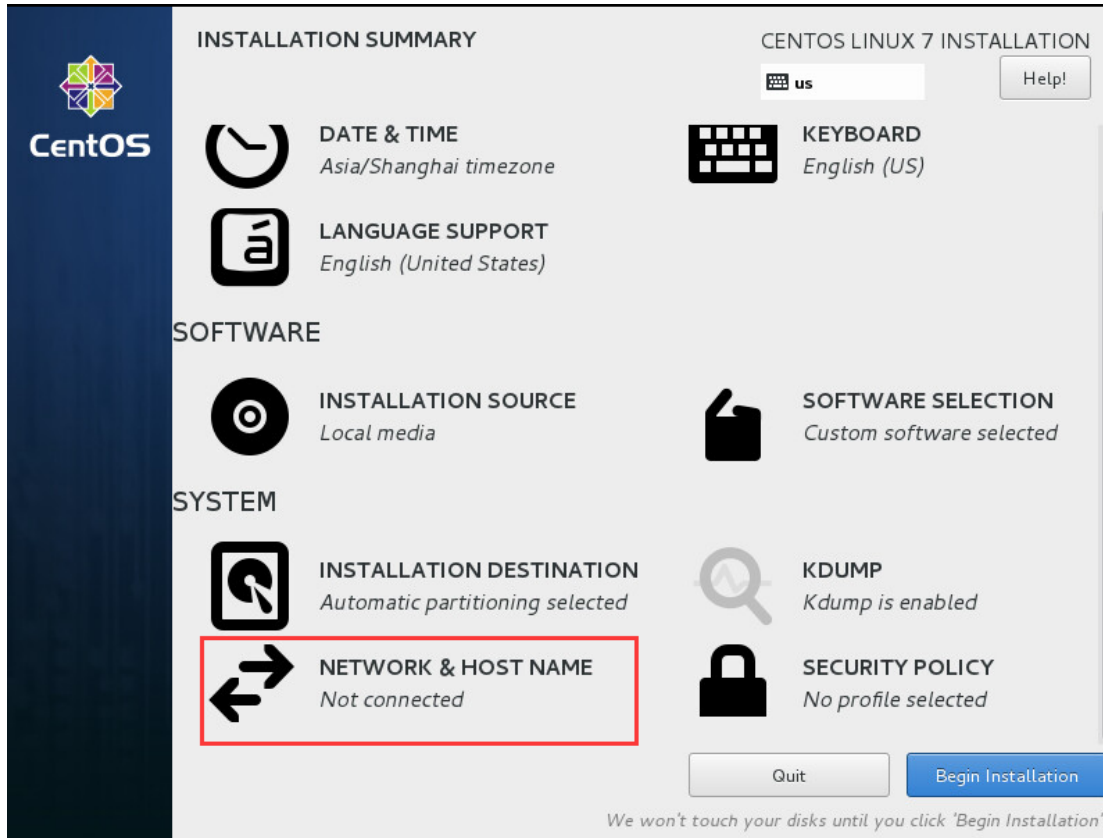


Click the **"INSTALLATION DESTINATION"**, choose one disk as system disk (if multiple disk exists, you can only

choose one disk to install the Vinchin backup server, other disks can be used as backup storage), 100+GB system disk is suggested. Then Click [**Done**].



Click "**NETWORK&HOST NAME**", then Click [**Configure...**]. Click "**IPv4 Settings**" → Choose "**Manual**" in the "Method" selection → Click [**Add**] to enter your network IP address information, example as below. Then click [**Save**] to save your configuration data.



Done

us

Help!

Editing ens160

Connection name: ens160

General

Ethernet

802.1X Security

DCB

IPv4 Settings

IPv6 Settings

Method: Manual

Addresses

Address	Netmask	Gateway	
192.168.65.5	255.255.192.0	192.168.64.1	<div>Add</div> <div>Delete</div>

DNS servers: 192.168.128.2

Search domains:

DHCP client ID:

☐ Require IPv4 addressing for this connection to complete

Routes...

Cancel

Save

Click the red marked button in below to enable the Ethernet connection, you will see the configured network information. Click **[Done]** on the left top to return back to home page.

Done

us

Help!

Ethernet (ens160)

VMware VMXNET3 Ethernet Controller

+

-

Ethernet (ens160)

Connected

Hardware Address 00:50:56:87:64:99

Speed 10000 Mb/s

IP Address 192.168.65.5

Subnet Mask 255.255.192.0

Default Route 192.168.64.1

DNS 192.168.128.2

ON

Configure...

Host name: localhost.localdomain

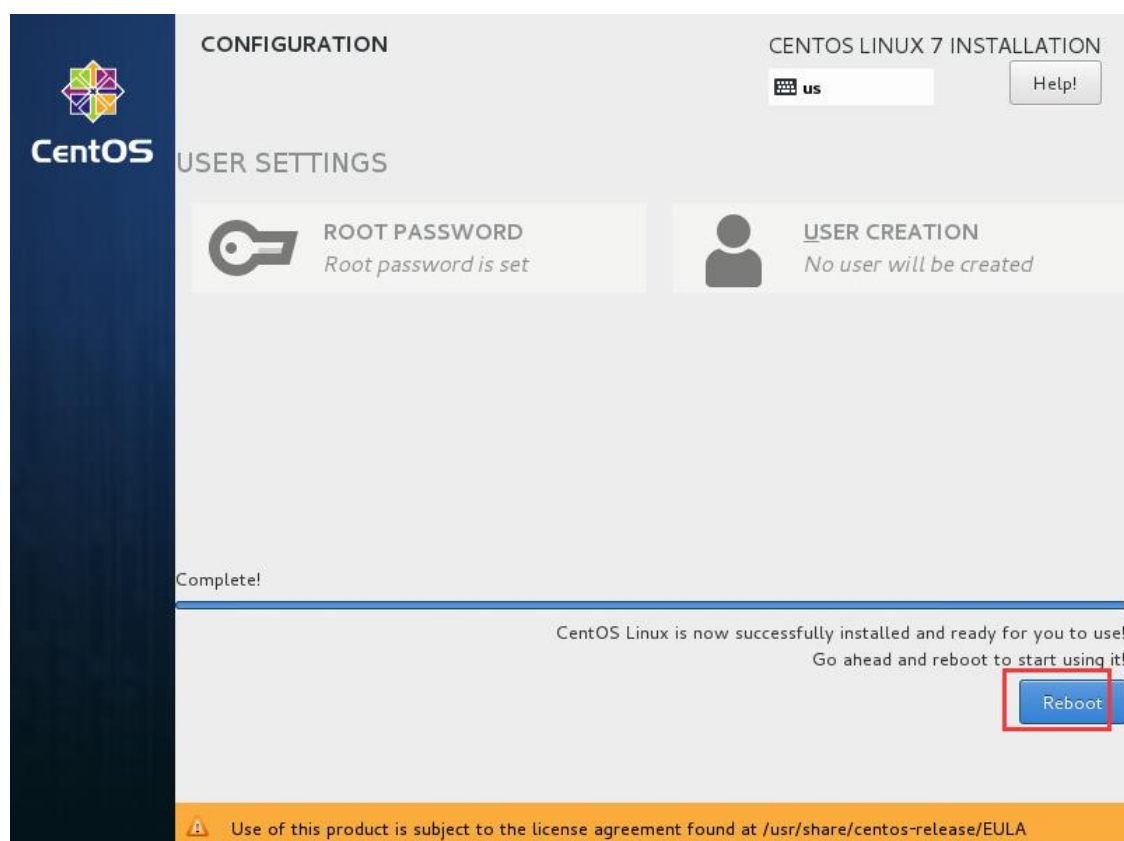
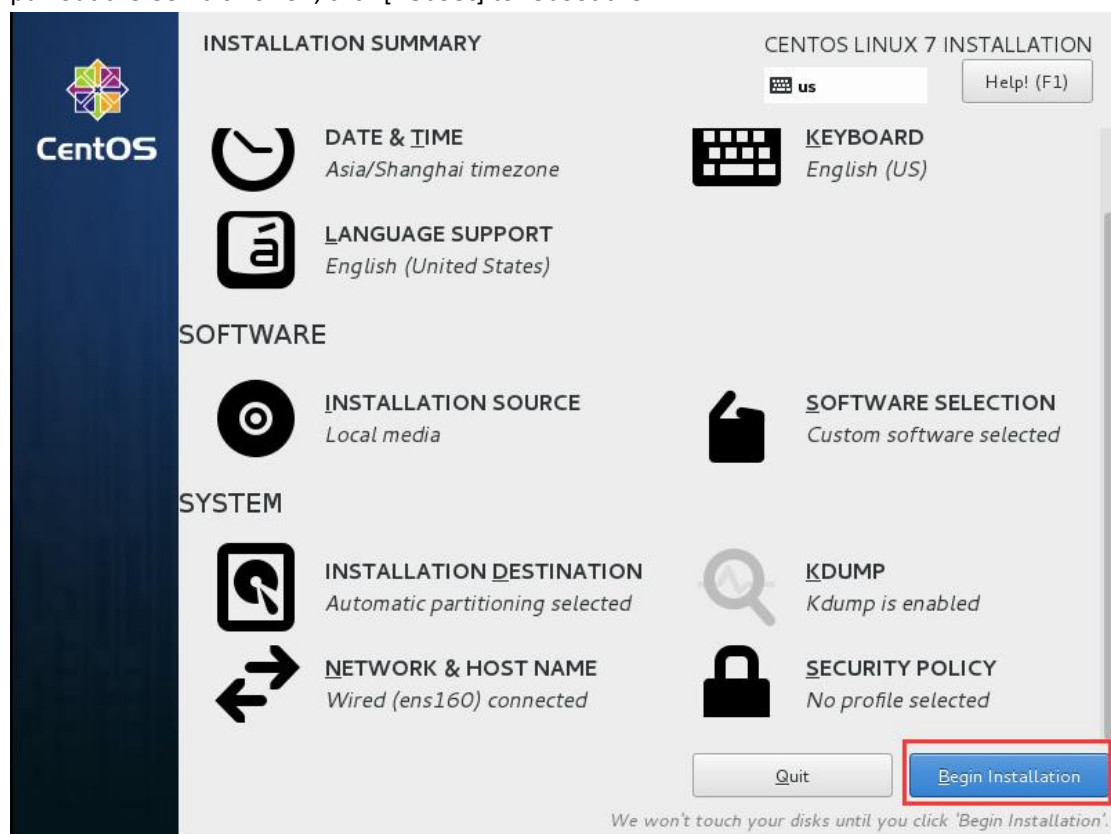
Apply

Current host name: localhost.localdomain

Vinchin Backup & Recovery | Quick Installation Guide 5.0

10

Other options are defaultly configured, directly click **[Begin installation]** to install. After installation completed, pull out the USB disk or CD, click **[Reboot]** to reboot the VM.



After VM rebooted, you can login to the web console of Vinchin backup server. Enter the IP address of Vinchin backup server to access the web login page. (Google Chrome browser is recommended.)

Web login username: **admin**

Password: **Admin@3R**

Backup server OS username: **root**

Password: **Backup@3R**



Install Backup Node (Optional)

A backup node (slave node) is an individual backup server without web console, it is managed by the web console of vinchin backup server (master node).

In large virtual environment with large volume of data, computing resources and network resources are limited. How to effectively backup the VMs and occupy the minimal resources, Vinchin adopts "multiple backup nodes" method.

Deploying multiple backup nodes in large environment can split the overall computing and storage resources in backup server to realize a horizontal expansion of the resources. Also doing backup concurrently from multiple backup nodes can increase the network transmission bandwidth exponentially and make your backup much faster.

Record Vinchin backup node ISO file [vinchin-node_enterprise-5.0.xxxx.iso](#) to USB disk or CD, detailed installation steps please follow chapter "[Record ISO File](#)".

Note:

1. There is no web console on backup node, all backup nodes are managed by the web console of backup server.
2. The backup node's IP address shall be different from the backup server, but make sure they are connected with each other.

After the backup node is installed successfully, you can login the backup node's OS to modify config files.

Backup node OS username: **root**

Password: **Backup@3R**

Please input Vinchin backup server's IP address following prompts, then reboot backup node OS.

```
[root@localhost ~]# config_server
Current server ip is: 0.0.0.0, Please input new server ip: 192.168.65.68
Need to reboot system now [Y/n]?y
```

After rebooting the backup node OS, log in the backup server's web console with default username: admin, password: Admin@3R. You can view the installed backup node information in the [Resources] → [Backup Node].

The screenshot shows the Vinchin Backup & Recovery web console interface. The left sidebar contains navigation links: Home, Monitor Center, VM Backup/Restore, Backup Copy, Resources (highlighted), Virtual Infrastructure, Backup Node, Storage, and LAN Free. The main content area is titled 'Backup Node' and displays a 'Backup Node List' table. The table has columns for No., Node Name, IP Address, Add Time, Deploy Status, and Node Status. Two nodes are listed: Node 1 with IP 192.168.65.52 and Node 2 with IP 192.168.65.68. Node 2's Node Name 'localhost.localdomain' is highlighted with a red box. Both nodes are in 'Deployed' status and have a 'Normal' Node Status. A note at the bottom of the table area states: 'Note: To deploy backup nodes, please contact support@vinchin.com to get the backup node installer. Follow Quick Installation Guide to complete the installation. After install success, backup node info will be listed here. If you need support during the installation, please contact our support team.'

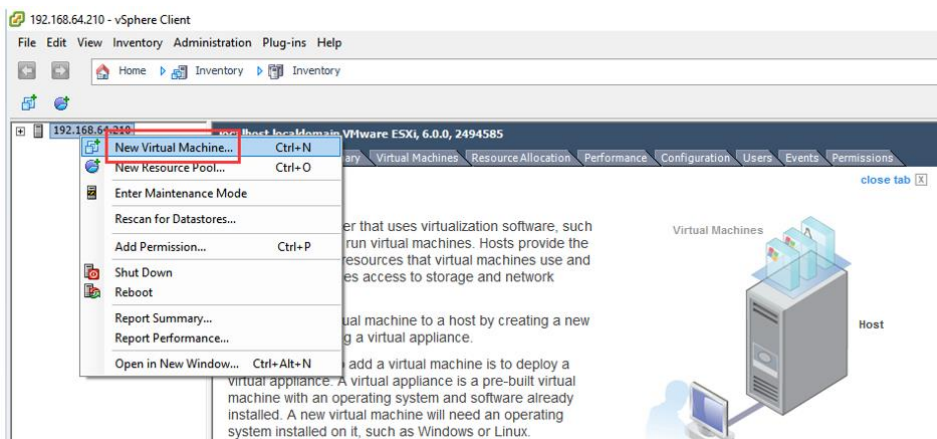
No.	Node Name	IP Address	Add Time	Deploy Status	Node Status
1	localhost.localdomain	192.168.65.52	2019-09-29 20:21:45	Deployed	Normal
2	localhost.localdomain	192.168.65.68	2019-09-29 20:13:25	Deployed	Normal

Install on VMware

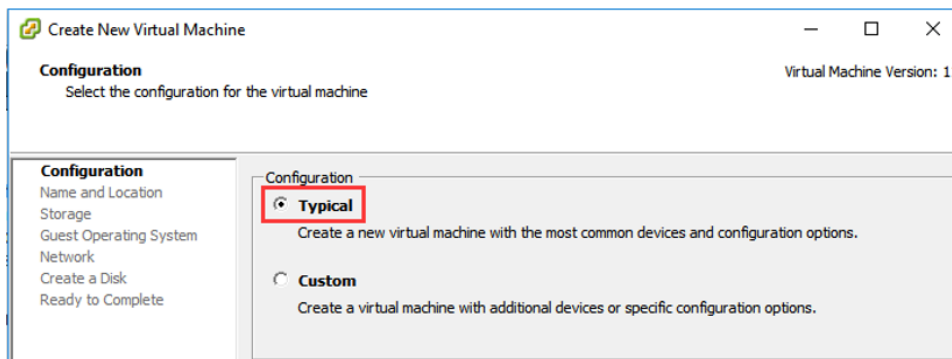
Create New Virtual Machine

To install the Vinchin Backup & Recovery on a VMware vSphere ESXi host, first you need to connect the vSphere Client with the host or vCenter. Then create a new virtual machine via the vSphere Client. After that, you can install the Vinchin backup server ISO file.

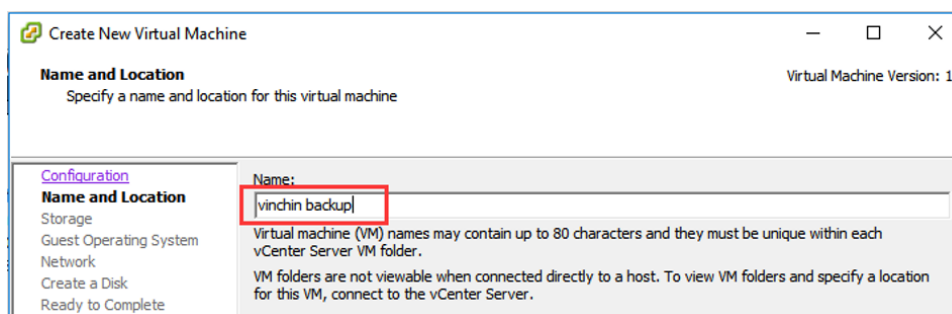
Right click a target host, then click [**New Virtual Machine...**] to create a new VM.



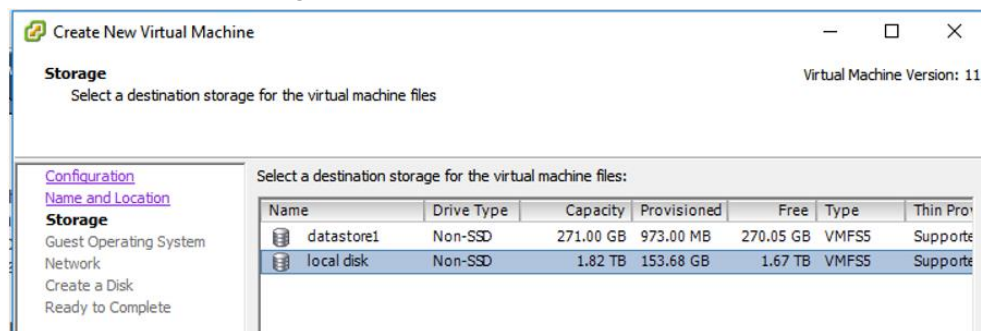
Select “**Typical**” by default in the VM creating page, and click [**Next**] to the next page.



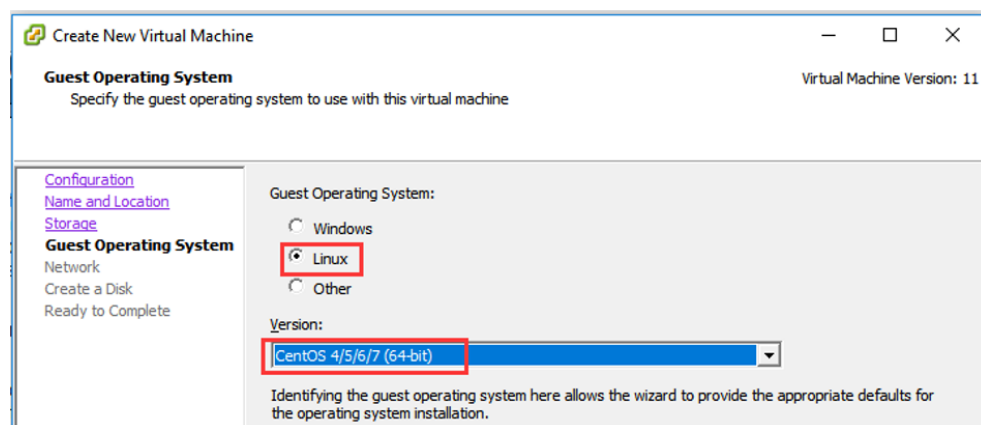
Type a name for the new VM and click [**Next**].



Select a destination storage for the new VM and click **[Next]**.

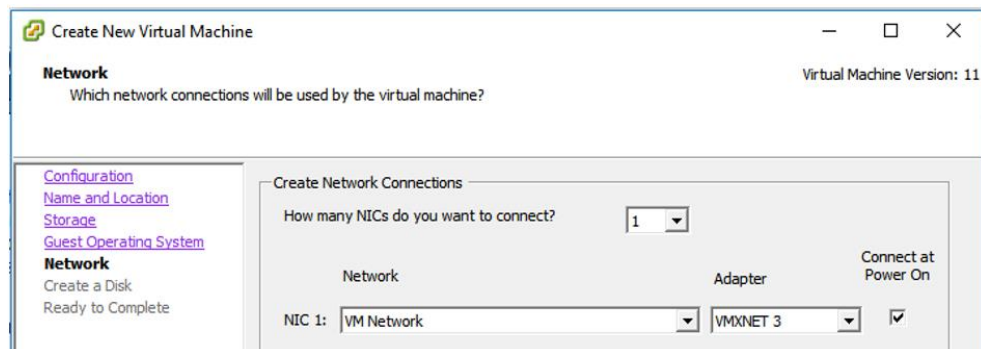


Choose **“Linux”** as guest OS and corresponding version please choose **“CentOS 4/5/6/7 (64-bit)”**, then click **[Next]**.

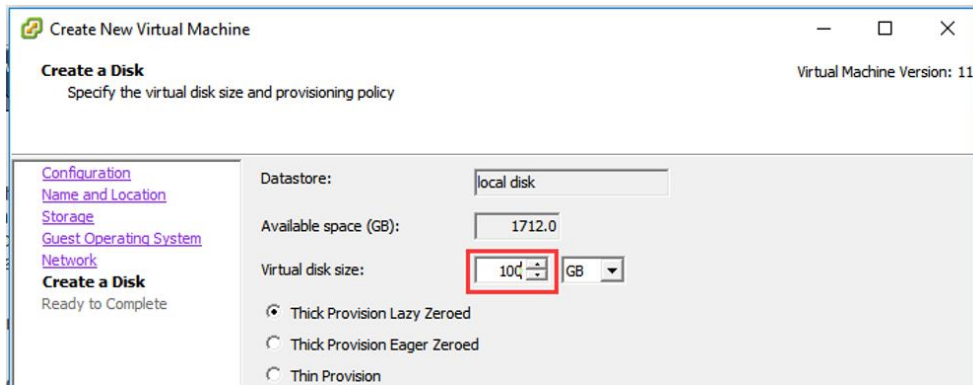


Configure network connections for the new VM as below, then click **[Next]**.

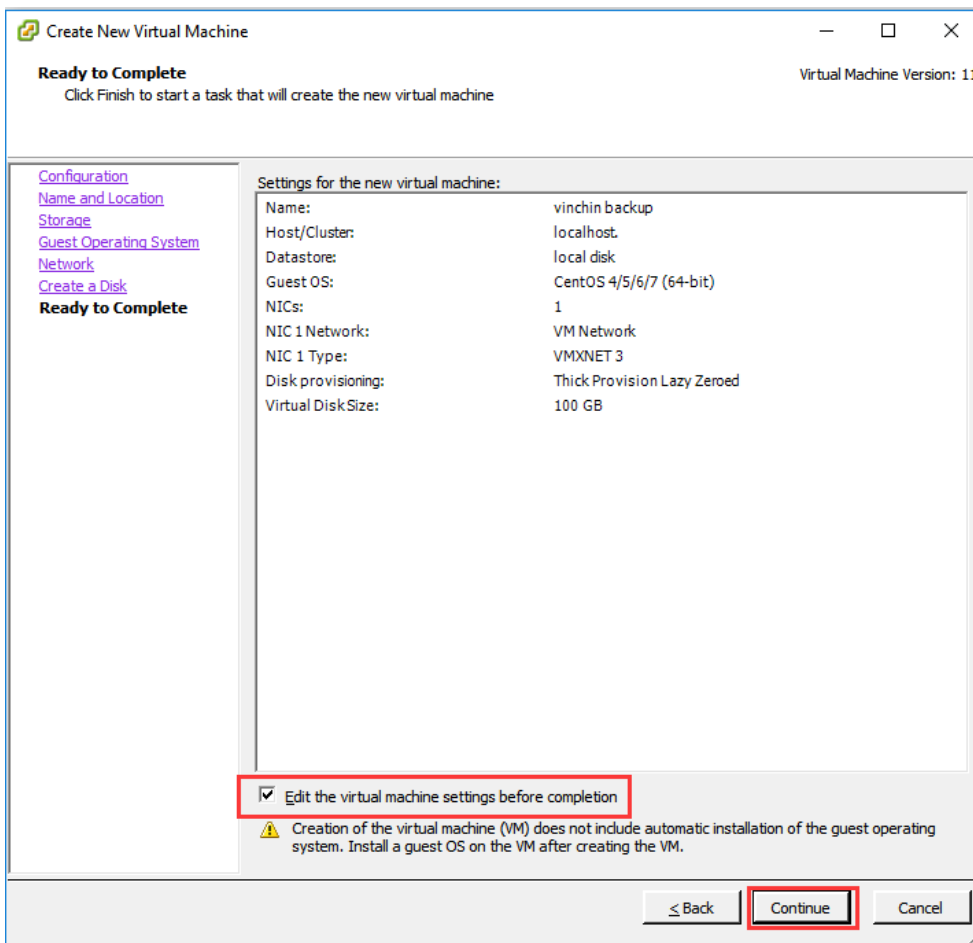
(Note: please connect at least one NIC.)



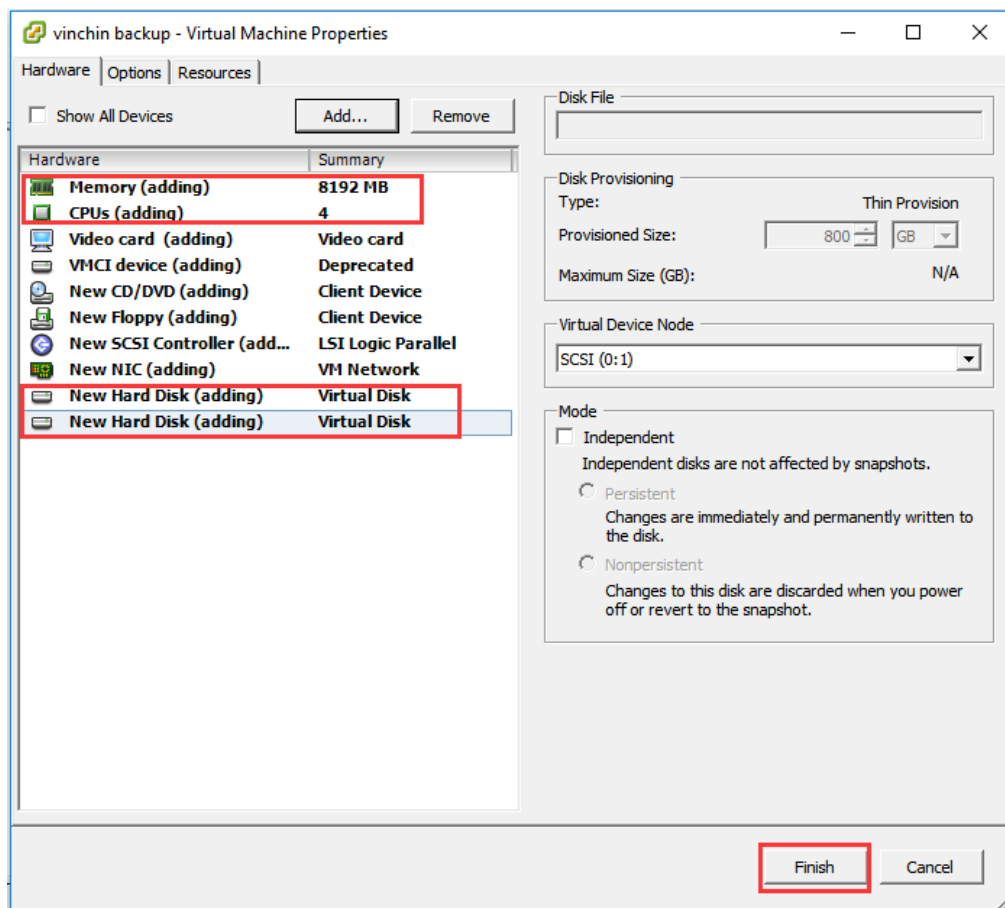
Specify a size for the virtual disk to use as system disk. Then click **[Next]**. (100+GB is recommended.)



Then tick “**Edit the virtual machine settings before completion**” and click [Continue] to the next page.

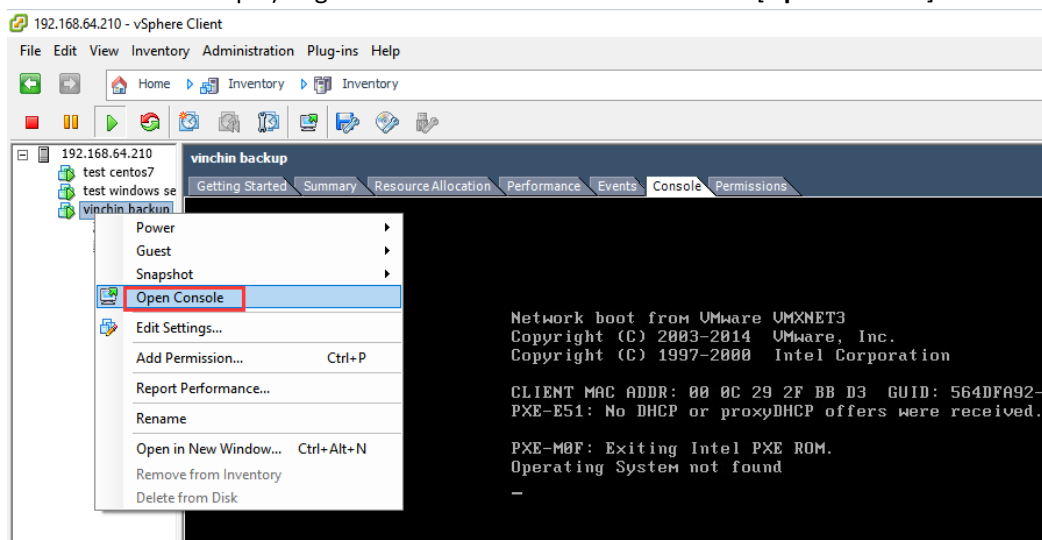



In this page, you can specify Memory size, CPU number and add New Hard Disk for the VM. We recommend at least 4CPU cores and 8GB RAM, and better to add a hard disk as backup storage (disk capacity can be set according to your actual demands), then click [Finish] to complete the new VM creation.

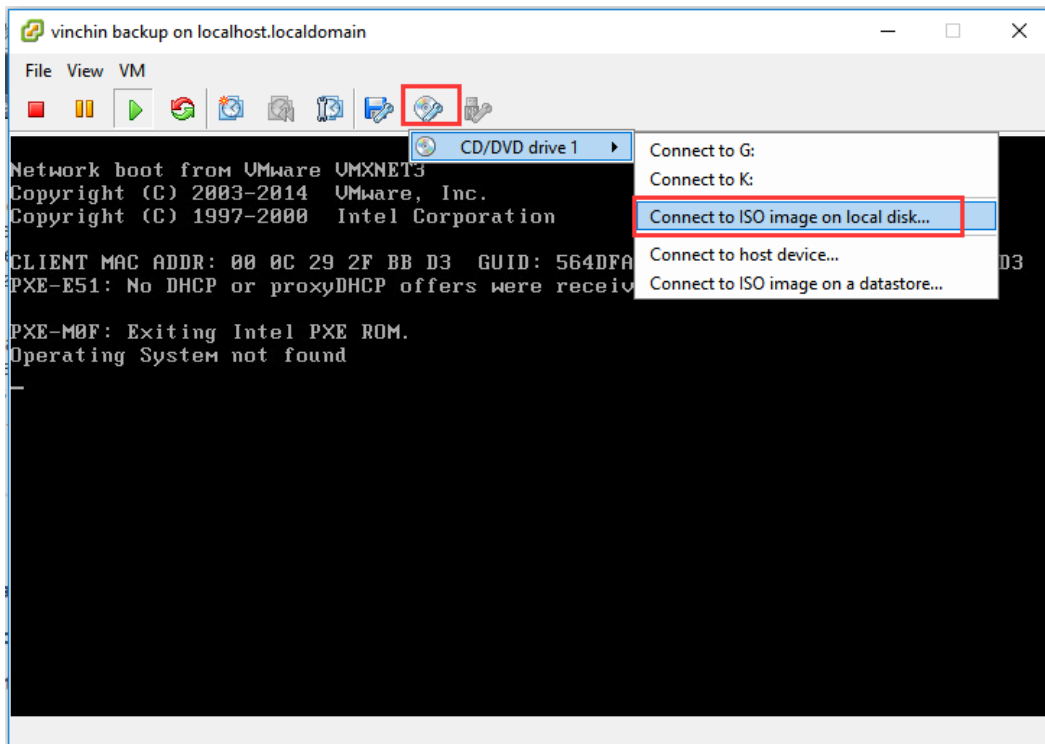


Install Backup Server

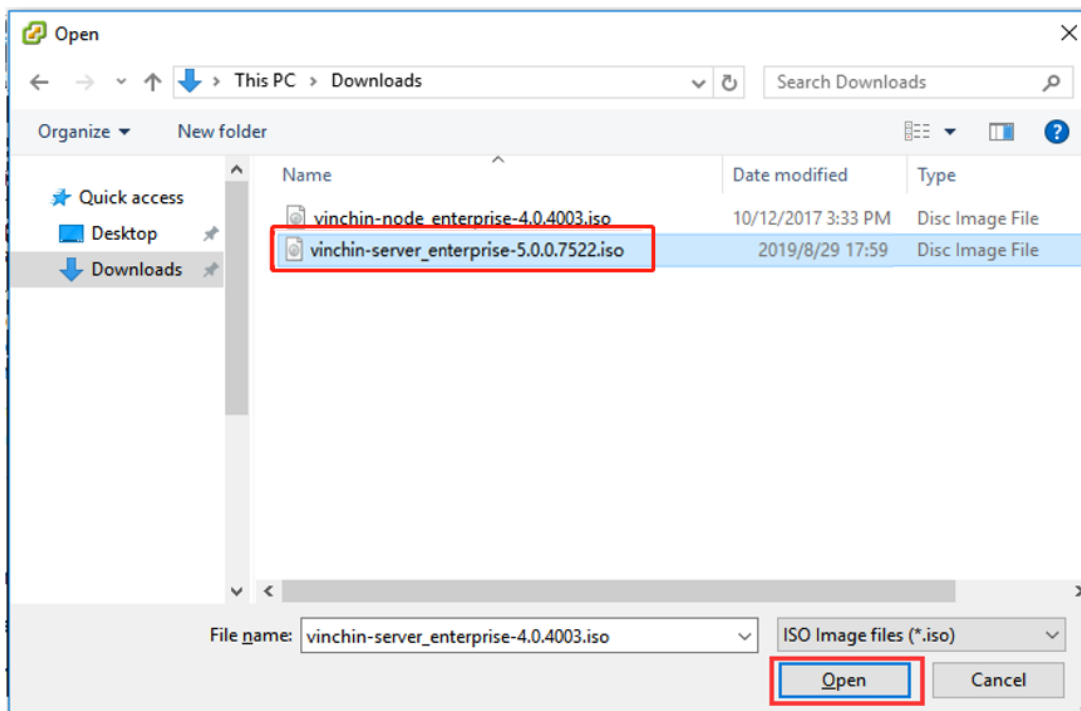
After new VM is created, power on the VM and start installing the Vinchin backup server ISO file. (Here we take VMware as an example). Right click the new created VM and click **[Open Console]**.



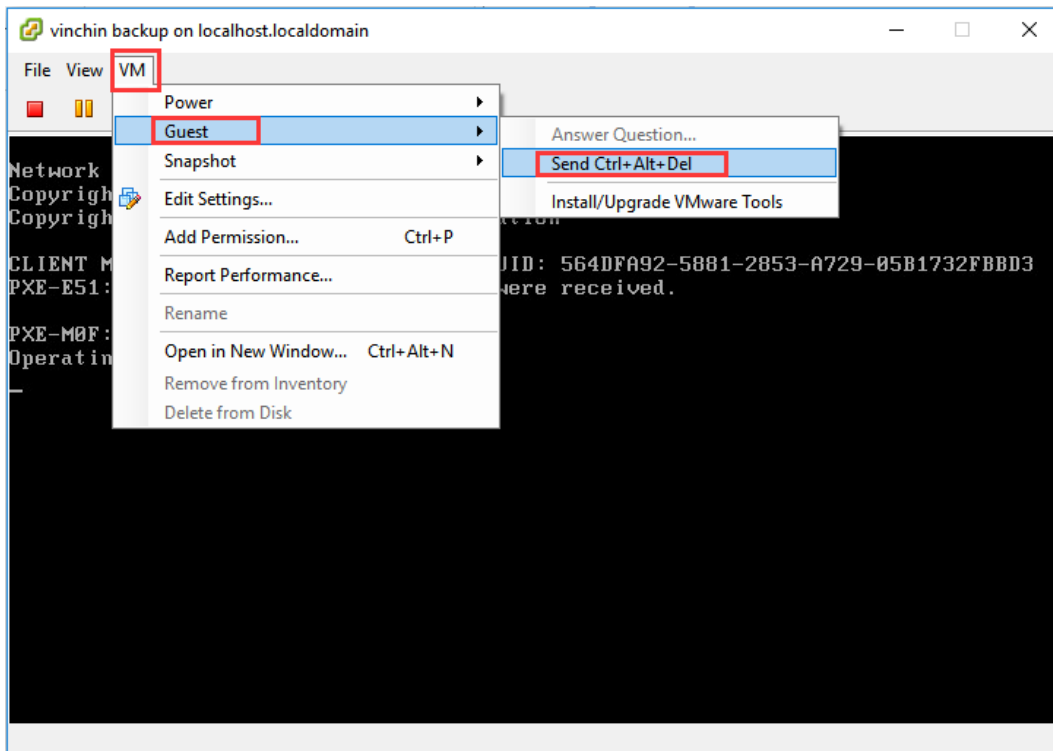
Click “ **CD/DVD drive 1**” and choose “**Connect to ISO image on local disk...**”



Choose the valid ISO file which you've downloaded from Vinchin website, e.g. choose "[vinchin-server_enterprise-5.0.0.7522.iso](#)" and click **[Open]**.



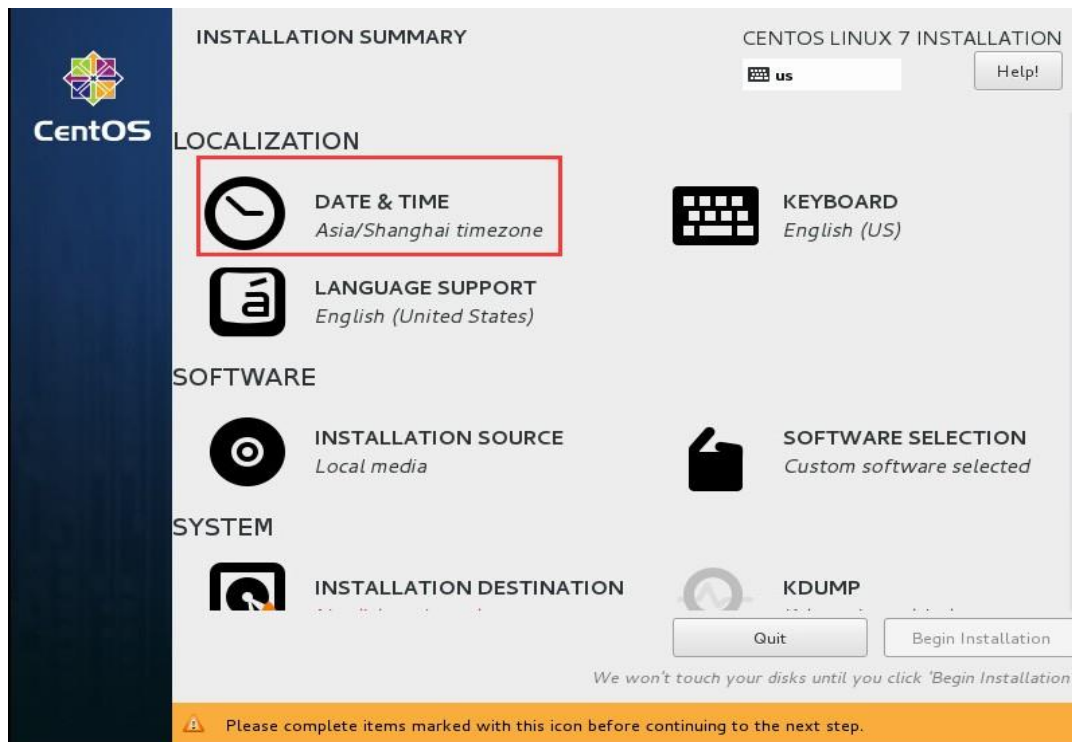
After ISO is mounted, click **[VM] → [Guest] → [Send Ctrl+Alt+Del]** as below, then reboot the VM.



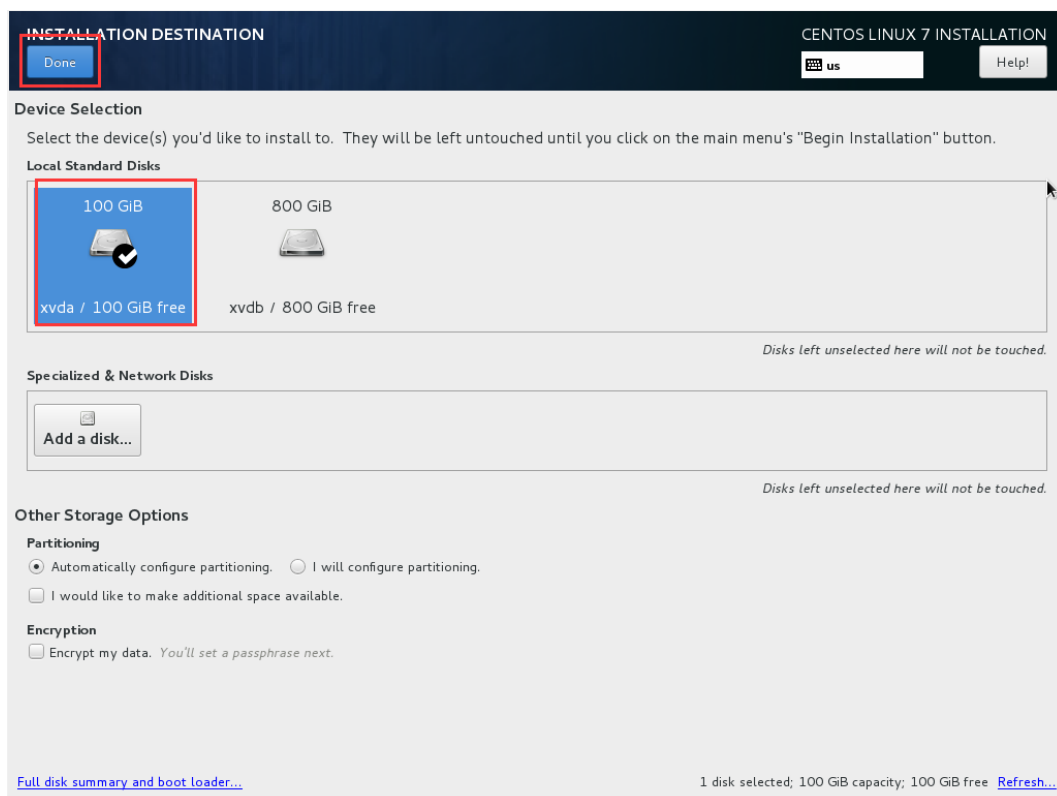
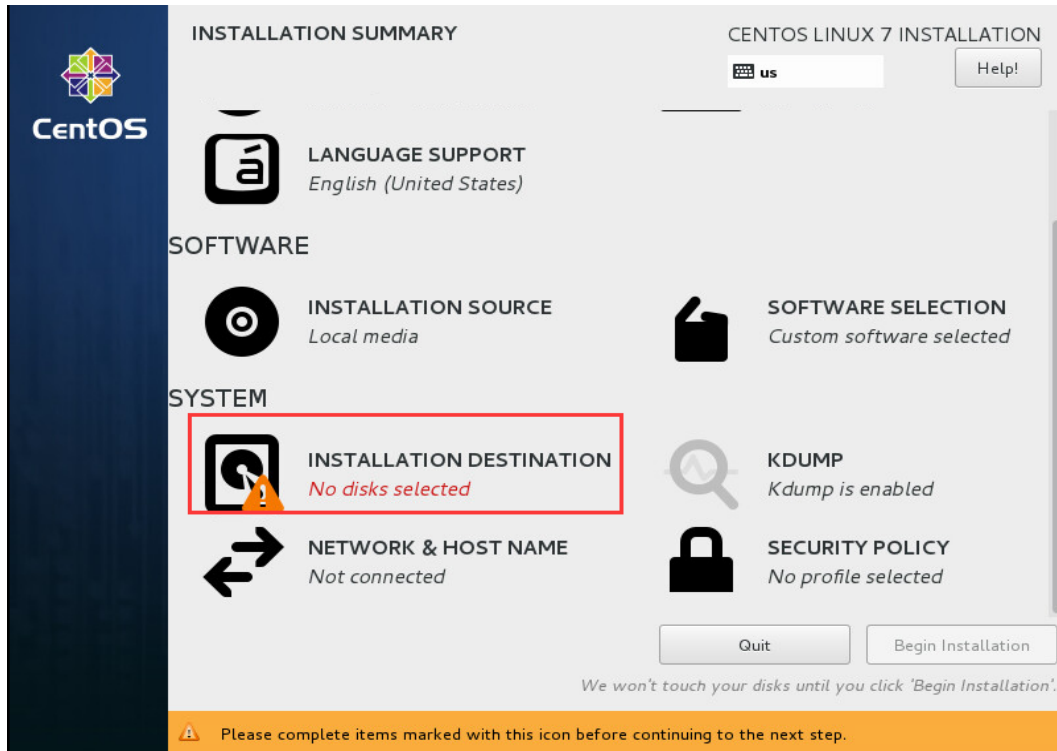
After rebooting, click **[Open Console]**, then you are entering the installation page. Choose **“Install CentOS 7”** and press **[Enter]** button on the keyboard. Then a few seconds later, you will be entering the **“INSTALLATION SUMMARY”** page.



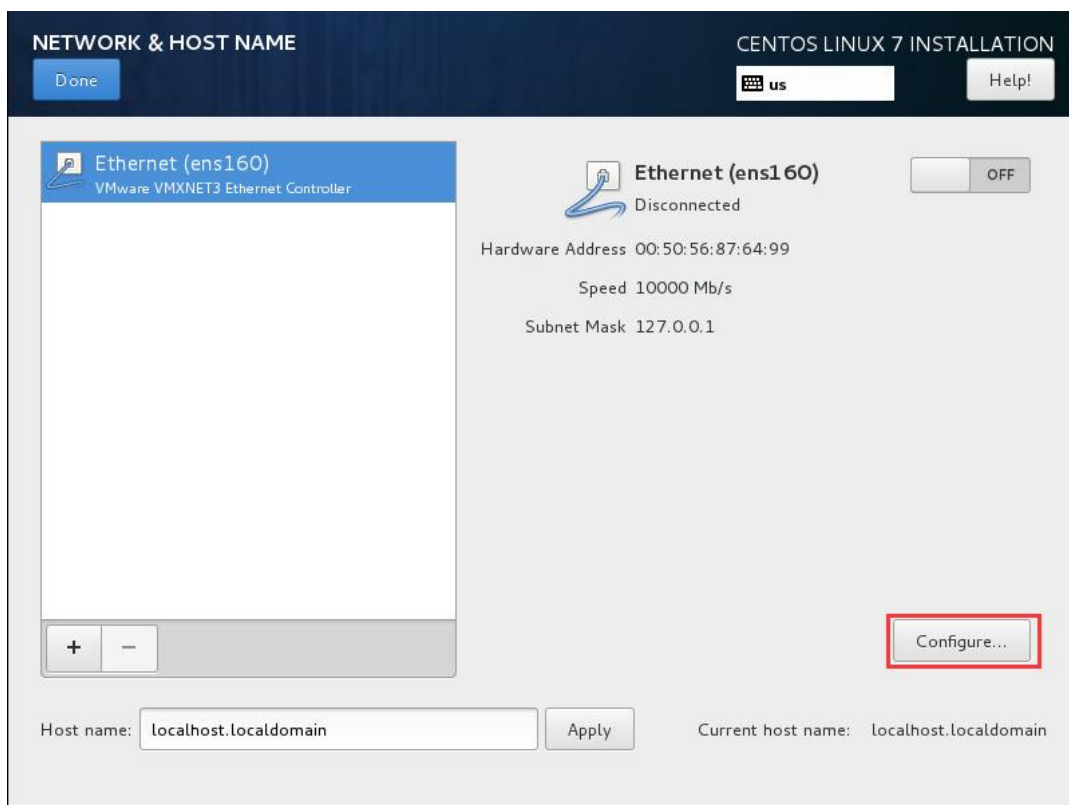
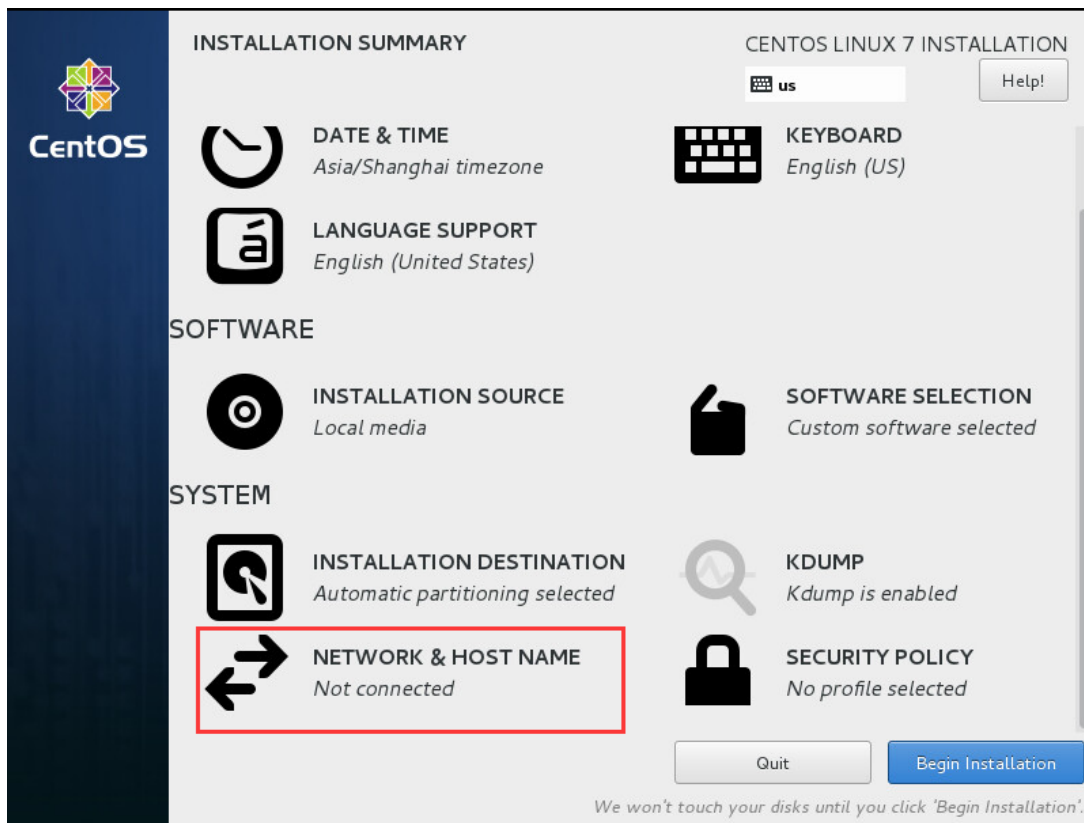
Click **“DATE & TIME”** to set up time for your Vinchin backup server.



Click the “**INSTALLATION DESTINATION**”, choose the 100GB hard disk as system disk and click **[Done]**.



Click **"NETWORK&HOST NAME"** and Click **[Configure...]** on the right bottom.



Click “**IPv4 Settings**” → Choose “**Manual**” in the “**Method**” selection → Click [**Add**] to enter your network IP address information, example as below. Then click [**Save**] to save your configuration data.

NETWORK & HOST NAME

Done

CENTOS LINUX 7 INSTALLATION

us

Help!

Editing ens160

Connection name: ens160

General

Ethernet

802.1X Security

DCB

IPv4 Settings

IPv6 Settings

Method: Manual

Addresses

Address	Netmask	Gateway
192.168.65.5	255.255.192.0	192.168.64.1

Add

Delete

DNS servers: 192.168.128.2

Search domains:

DHCP client ID:

☐ Require IPv4 addressing for this connection to complete

Routes...

Cancel

Save

Click the red marked button in below to enable the Ethernet connection, you will see the configured network information. Click **[Done]** on the left top to return back to home page.

NETWORK & HOST NAME

Done

CENTOS LINUX 7 INSTALLATION

us

Help!

Ethernet (ens160)

VMware VMXNET3 Ethernet Controller

+

-

Ethernet (ens160)

Connected

ON

Hardware Address 00:50:56:87:64:99

Speed 10000 Mb/s

IP Address 192.168.65.5

Subnet Mask 255.255.192.0

Default Route 192.168.64.1

DNS 192.168.128.2

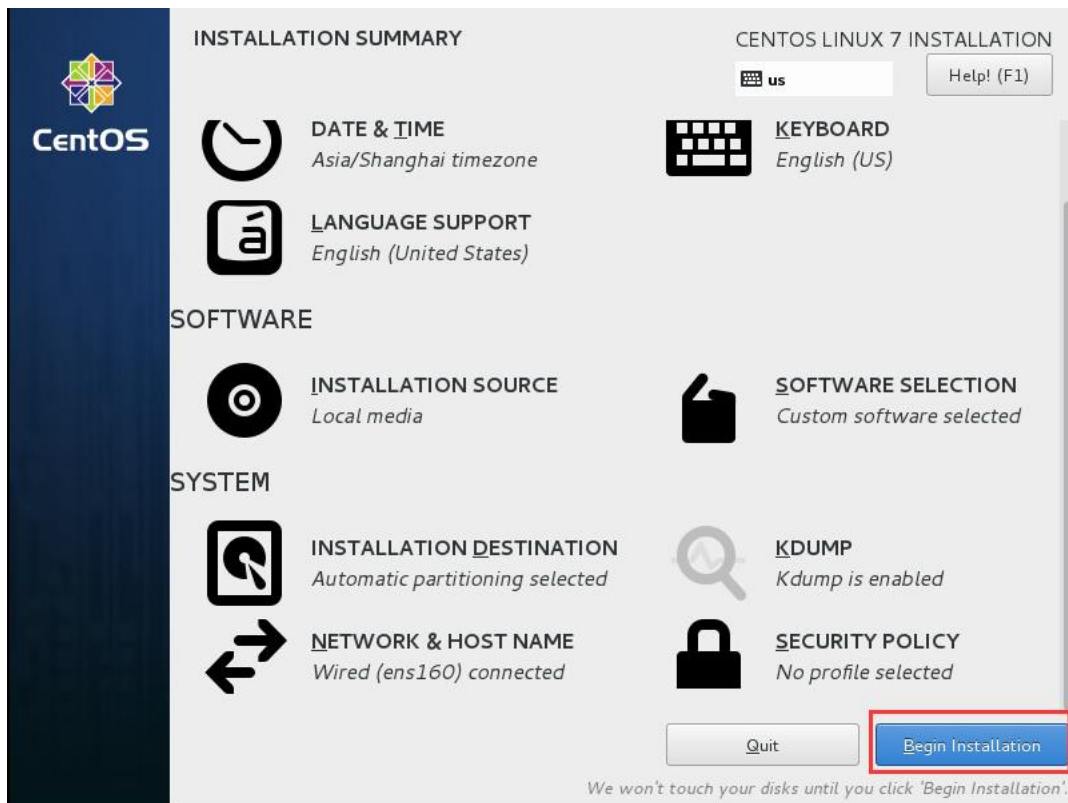
Configure...

Host name: localhost.localdomain

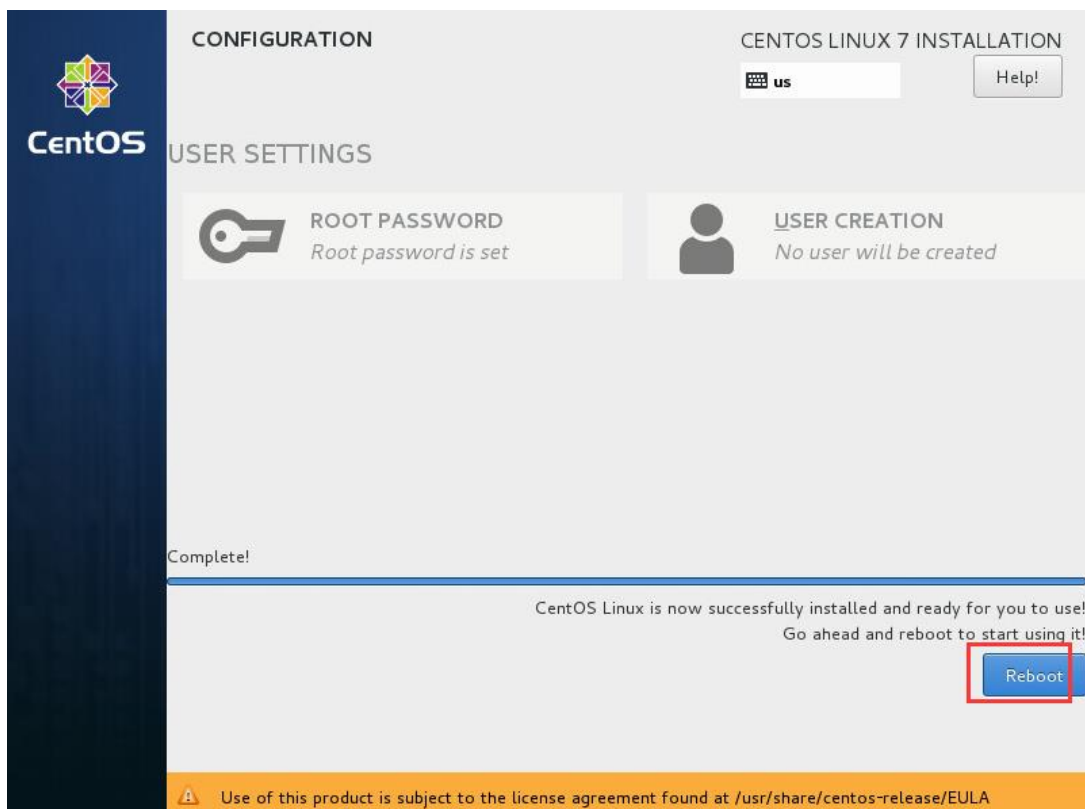
Apply

Current host name: localhost.localdomain

Other options are defaultly configured, directly click **[Begin installation]** to install.



After installation completed, click [Reboot] to reboot the VM.



After VM rebooted, you can login to the web console of Vinchin backup server. Enter the IP address of Vinchin backup server to access the web login page. (Google Chrome browser is recommended.)

Web login username: [admin](#)

Password: [Admin@3R](#)

Backup server OS username: [root](#)

Password: [Backup@3R](#)



Install Backup Node (Optional)

A backup node (slave node) is an individual backup server without web console, it is managed by the web console of vinchin backup server (master node).

In large virtual environment with large volume of data, computing resources and network resources are limited. How to effectively backup the VMs and occupy the minimal resources, Vinchin adopts "multiple backup nodes" method.

Deploying multiple backup nodes in large environment can split the overall computing and storage resources in backup server to realize a horizontal expansion of the resources. Also doing backup concurrently from multiple backup nodes can increase the network transmission bandwidth exponentially and make your backup much faster.

Record Vinchin backup node ISO file [vinchin-node_enterprise-5.0.xxxx.iso](#) to USB disk or CD, detailed installation steps please follow chapter "[Record ISO File](#)".

Note:

1. There is no web console on backup node, all backup nodes are managed by the web console of backup server.
2. The backup node's IP address shall be different from the backup server, but make sure they are connected with each other.

After the backup node is installed successfully, you can login the backup node's OS to modify config files.

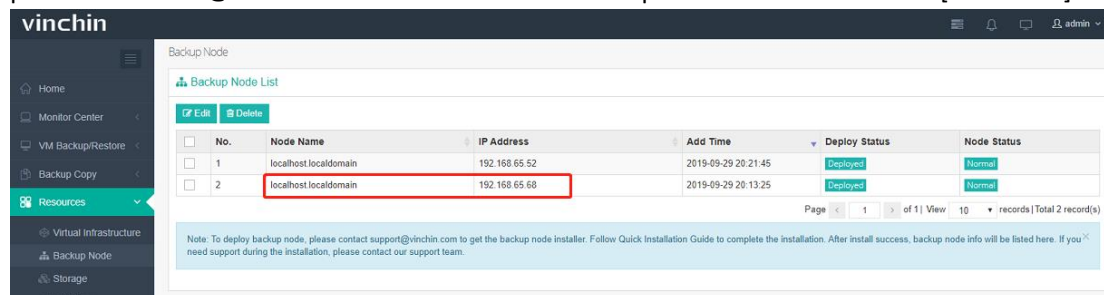
Backup node OS username: [root](#)

Password: Backup@3R

Please input Vinchin backup server's IP address following prompts, then reboot backup node OS.

```
[root@localhost ~]# config_server
Current server ip is: 0.0.0.0, Please input new server ip: 192.168.65.68
Need to reboot system now [Y/n]?y
```

After rebooting the backup node OS, log in the backup server's web console with default username: admin, password: Admin@3R. You can view the installed backup node information in the [Resources] → [Backup Node].

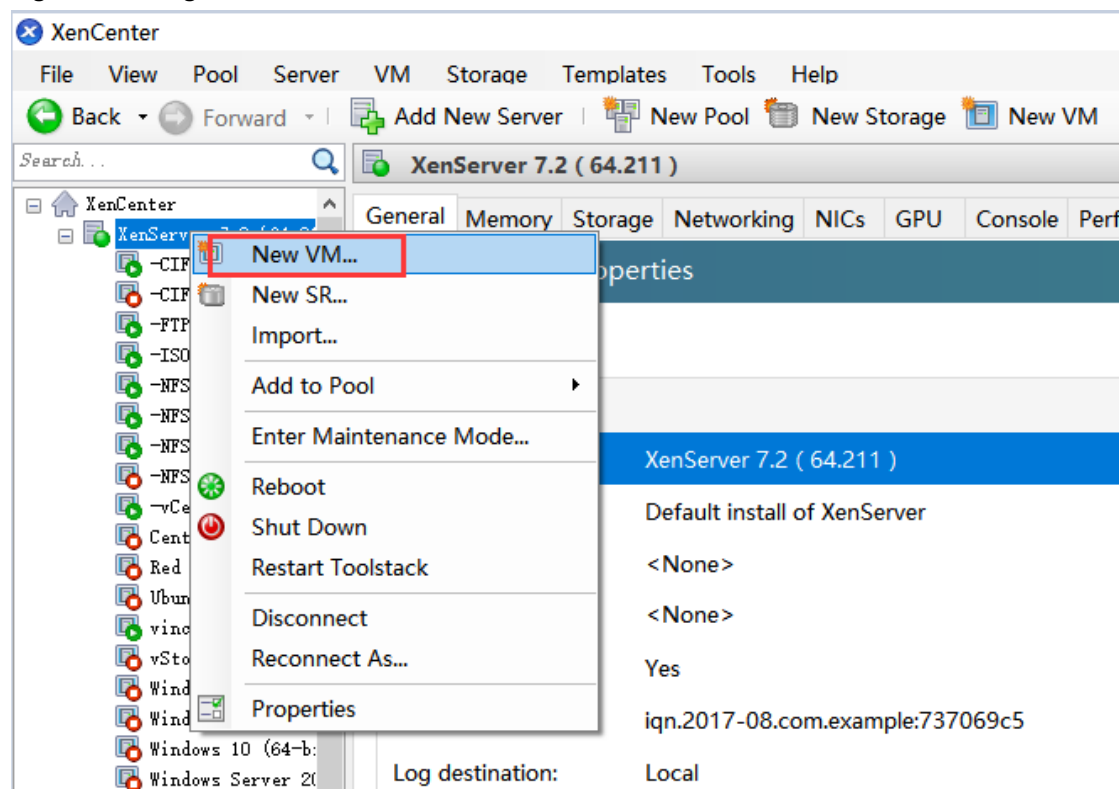


Install on XenServer

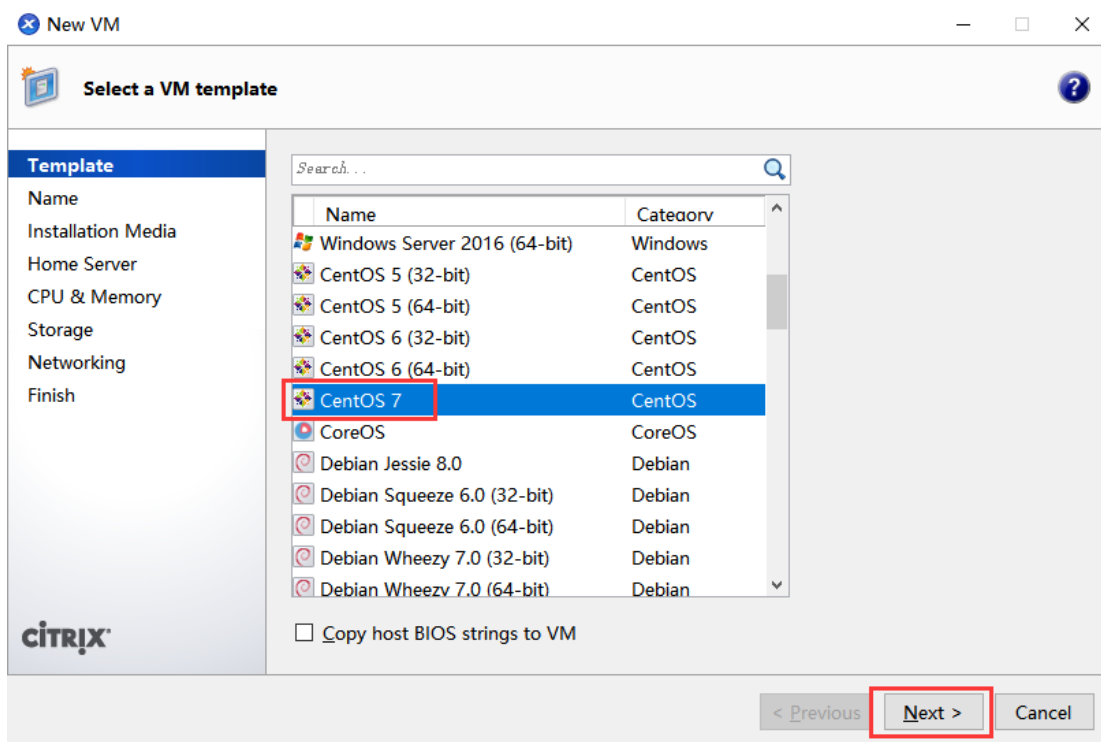
Create New Virtual Machine

To install the Vinchin Backup & Recovery on Citrix XenServer, first you need to connect the XenCenter with the host. Then create a new virtual machine via XenCenter. After that, you can install the Vinchin backup server ISO file.

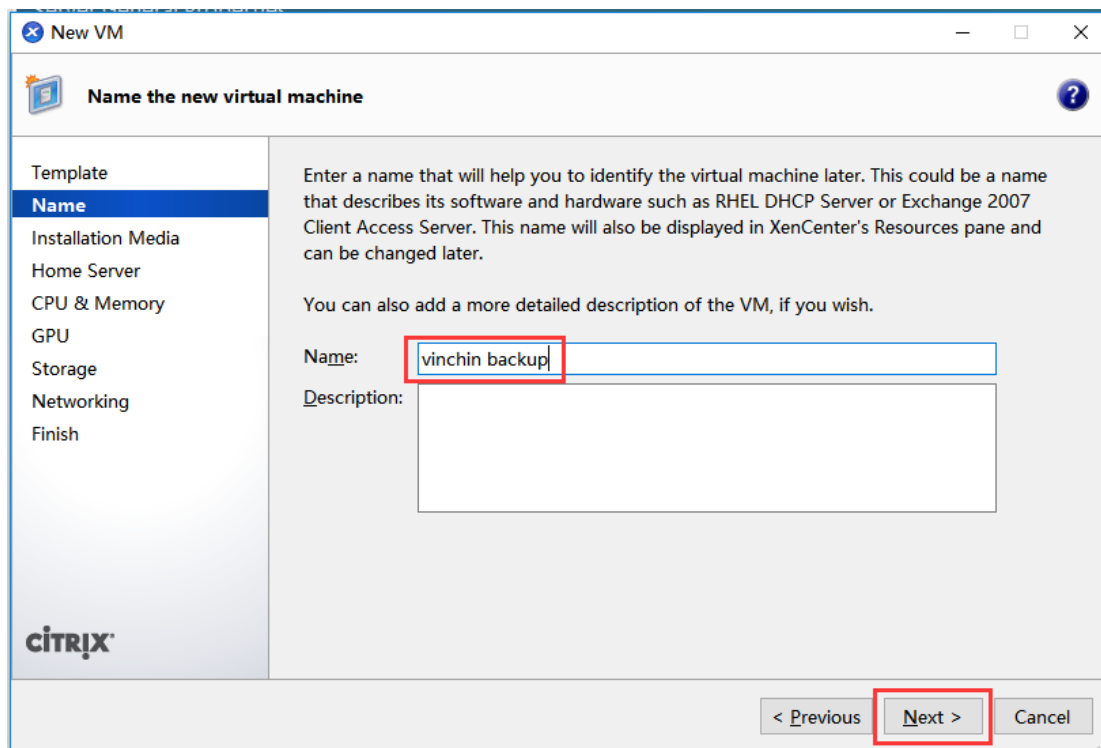
Right click a target host, then click “ **New VM...**” to create a new virtual machine.



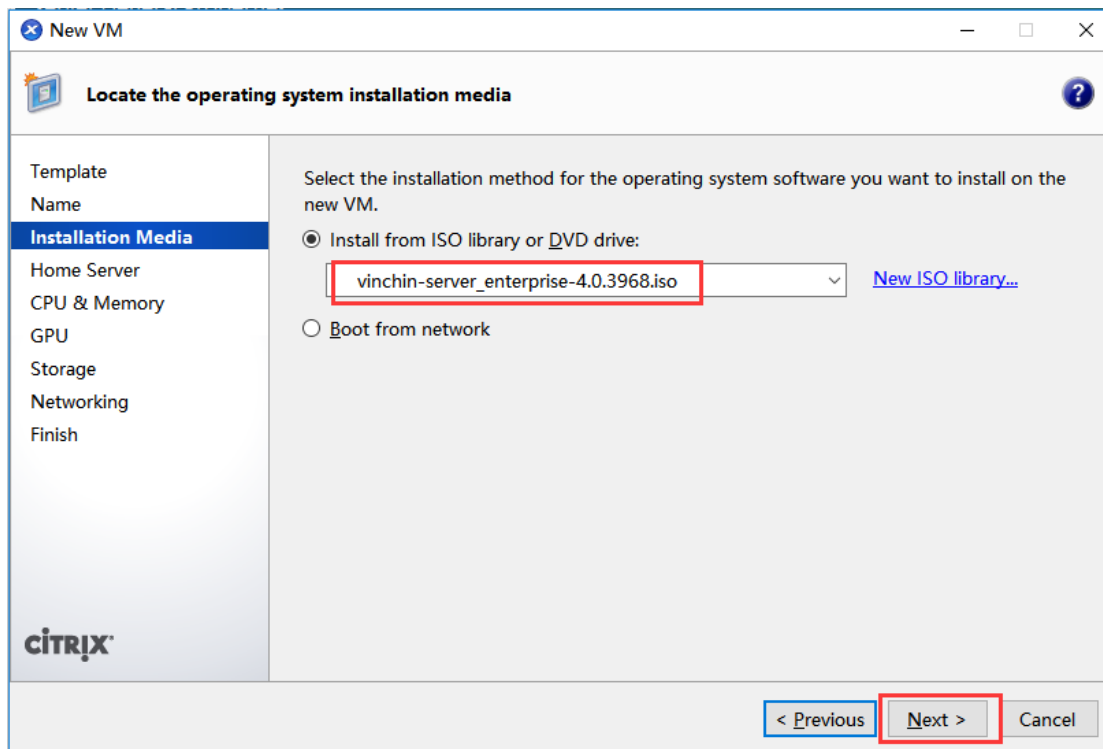
Choose “ **CentOS 7**” as VM template and click [next].



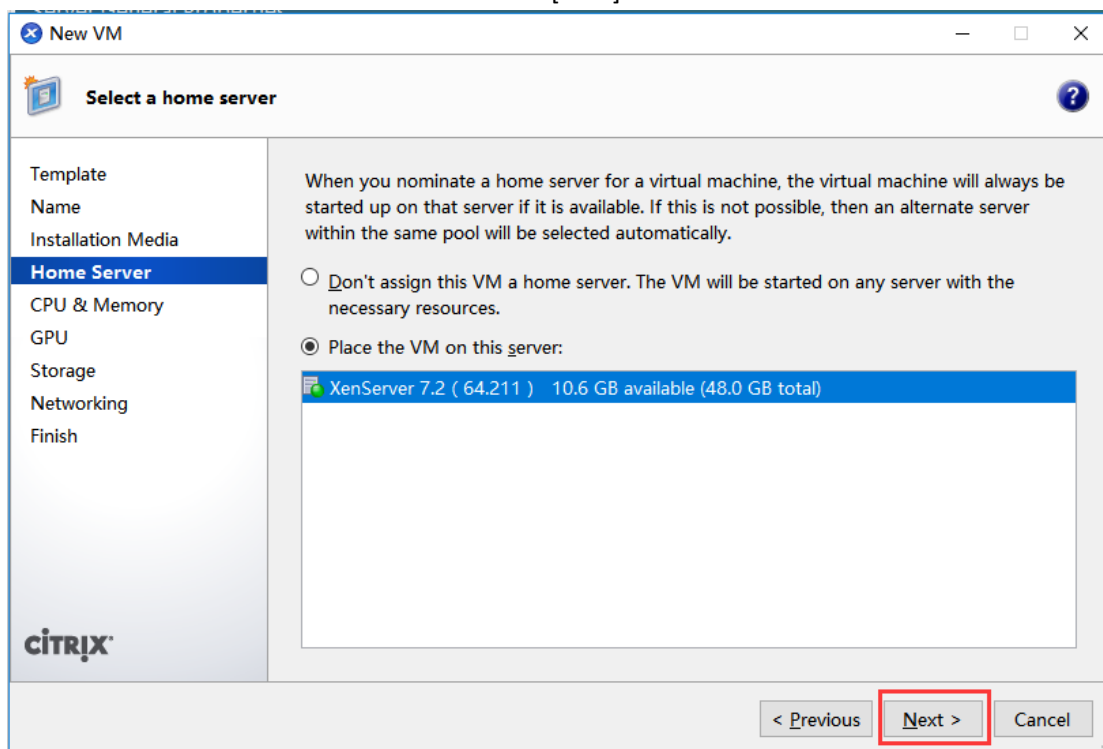
Type a name and description for the VM and click [Next].



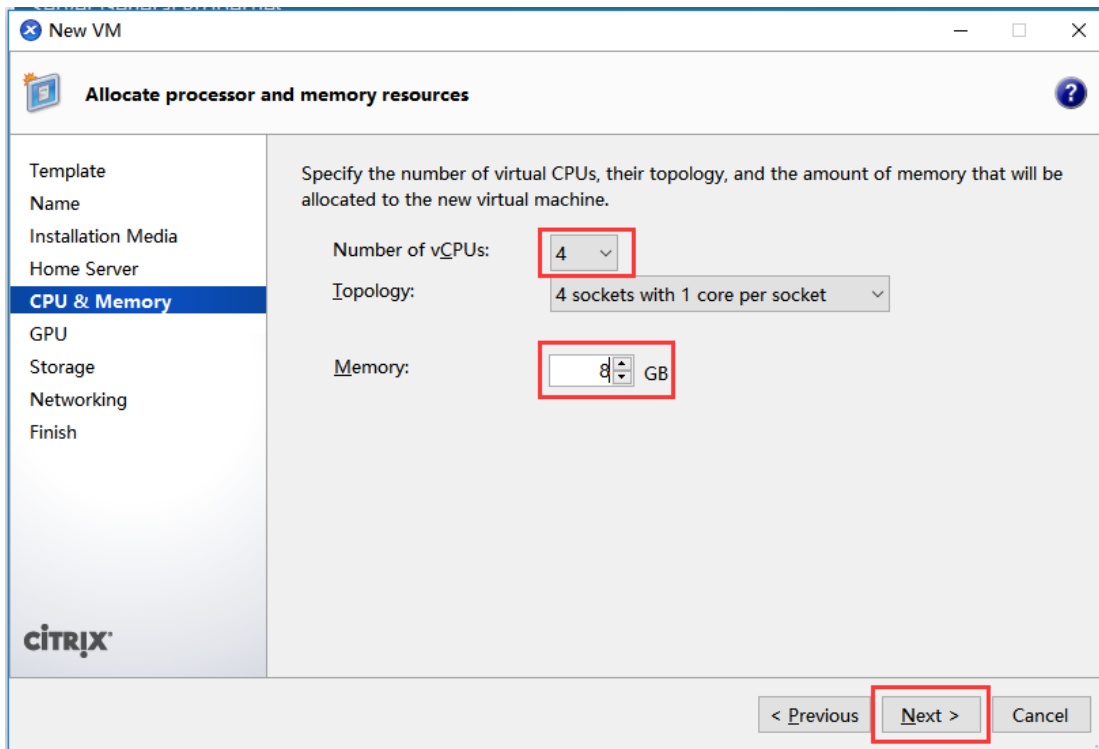
Choose “Install from ISO library or DVD drive”, choose a valid VINCHIN Backup & Recovery ISO file and click [Next].



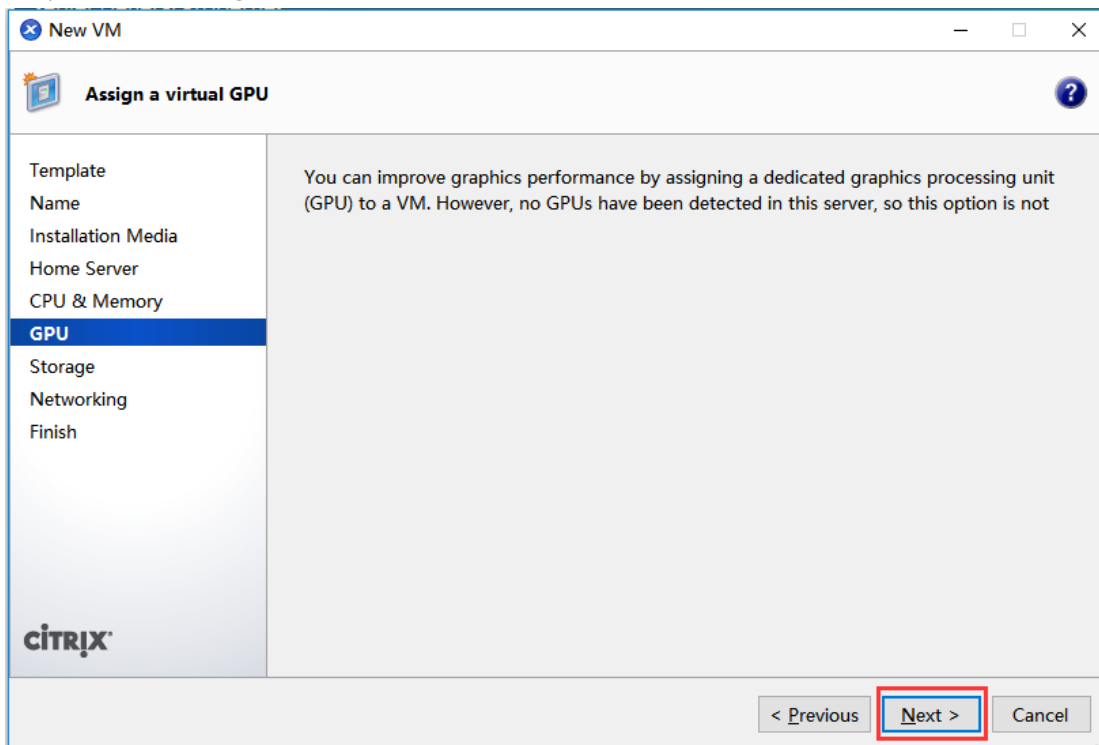
Choose “Place the VM on this server” and click [Next].



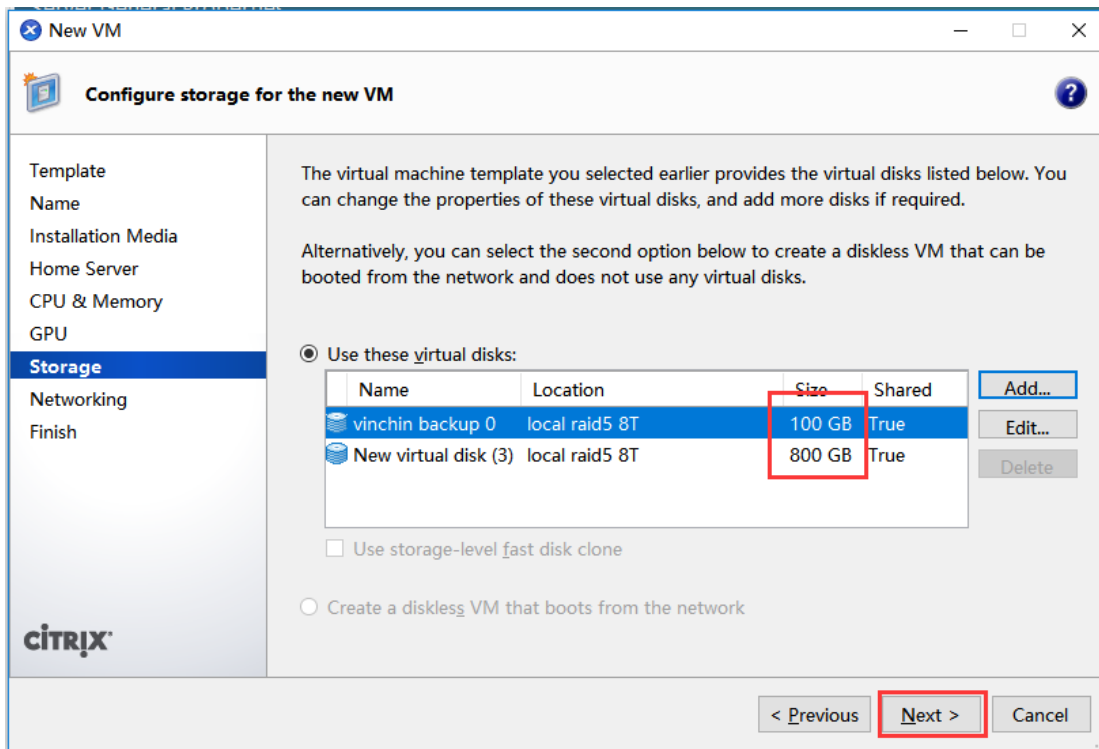
Set CPU number and memory size, we recommend at least 4 CPU cores and 8GB RAM. Then click [Next].



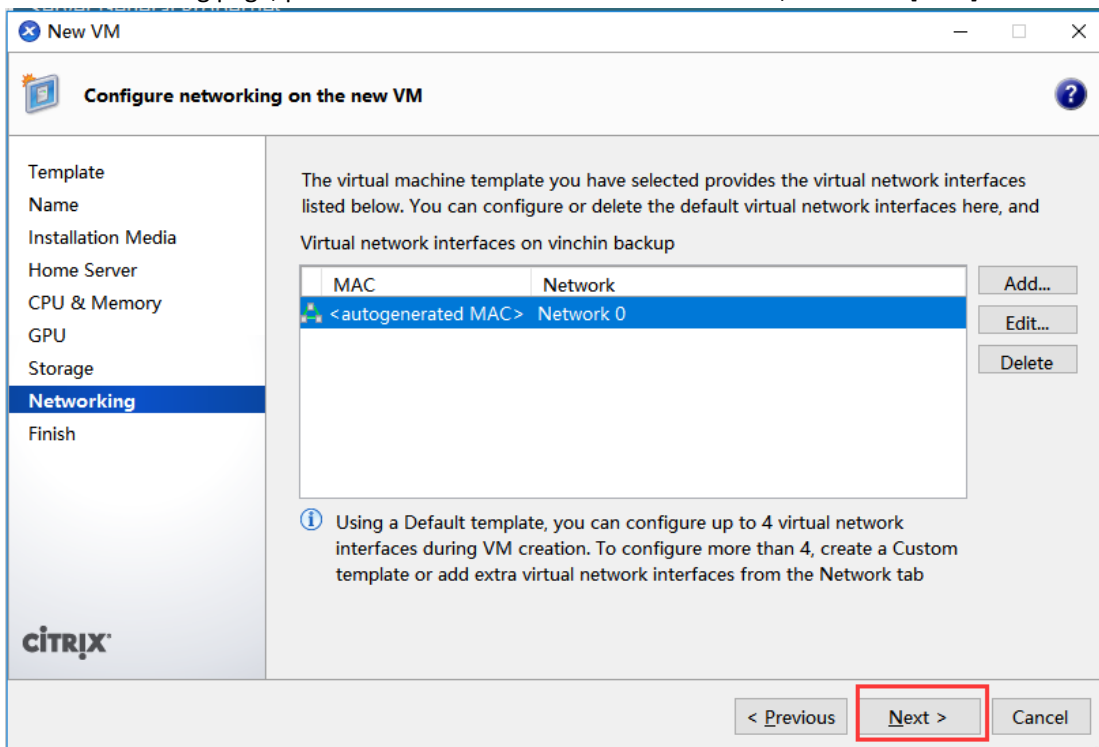
Keep the GPU settings default, click [Next].



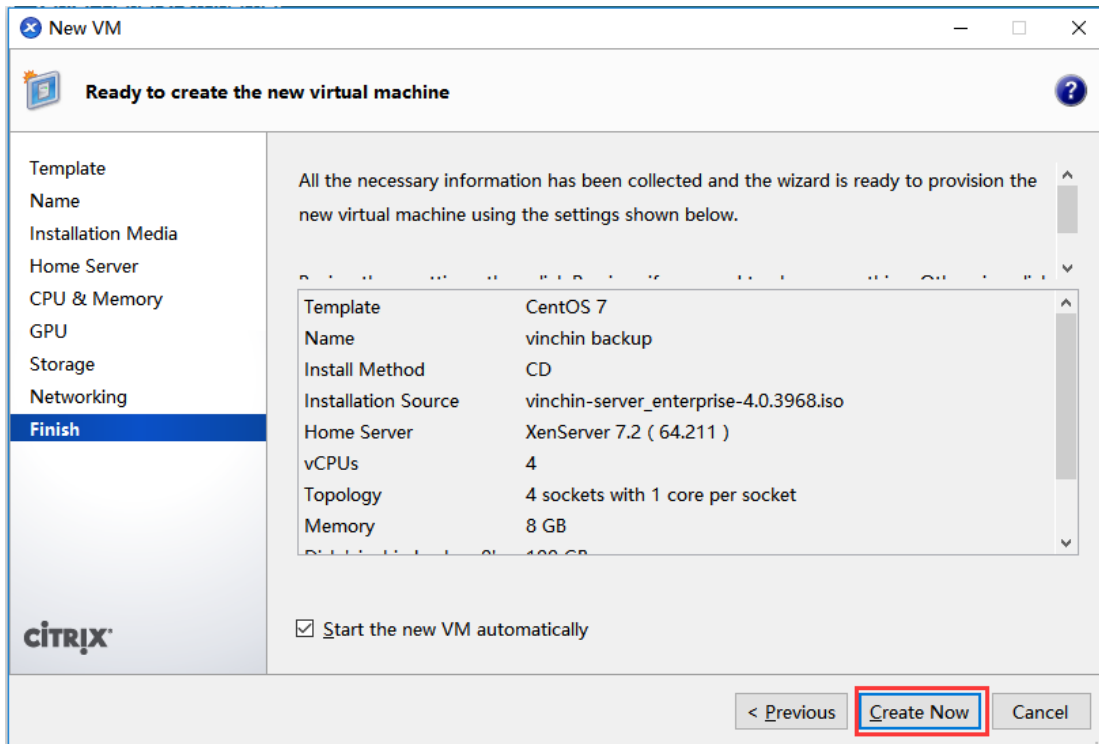
Set two storage disks for the VM, one as system disk, the other as backup storage. System disk capacity 100+ GB is recommended, backup storage capacity can be set according to your actual demands.



In the Networking page, please add at least one network connection, then click [Next].



Check the configuration data and click [Create Now] to create the VM.

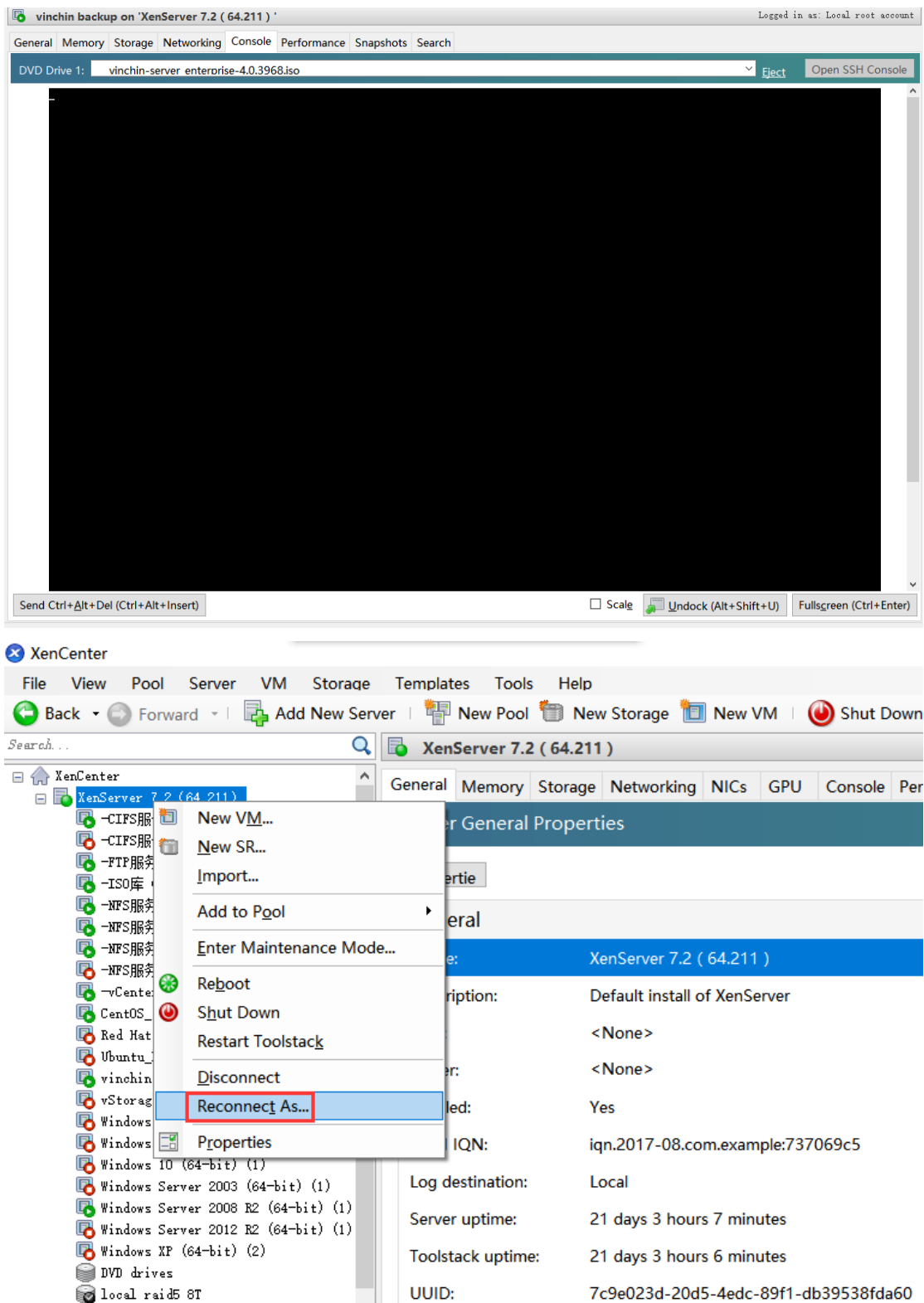


Install Backup Server

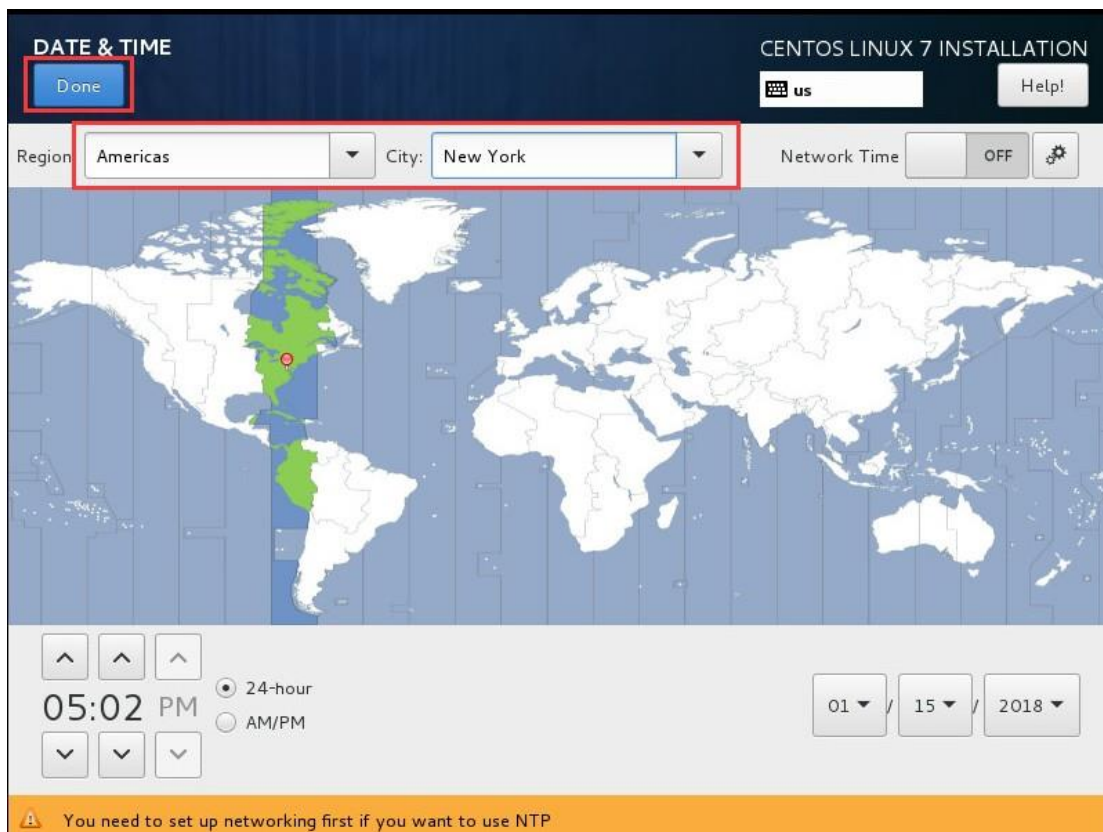
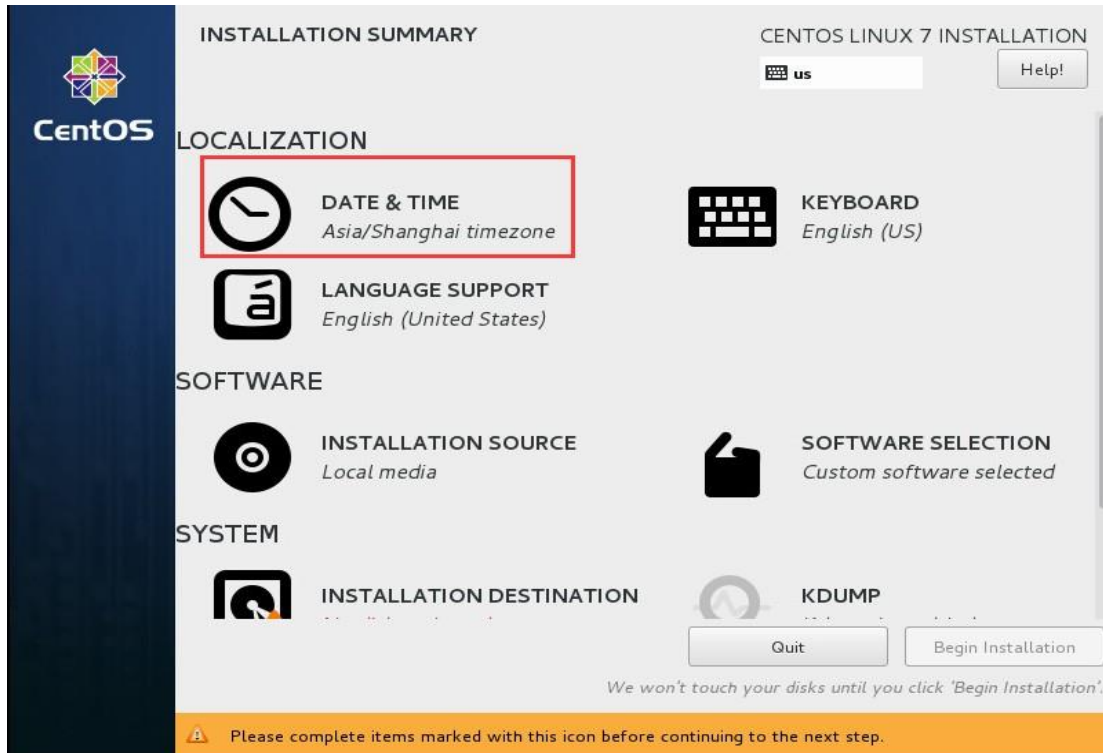
After new VM is created, power on the VM and start installing the Vinchin backup server ISO file. Choose “**Install CentOS 7**” and press [Enter] button on the keyboard.



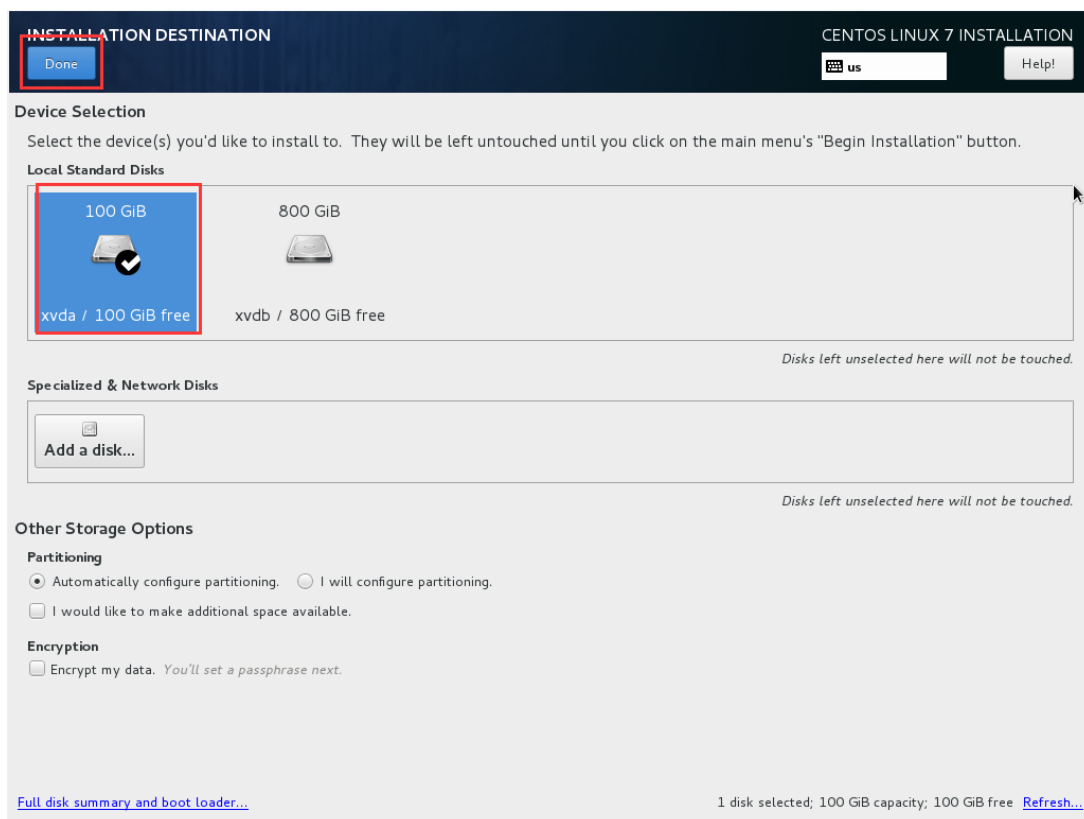
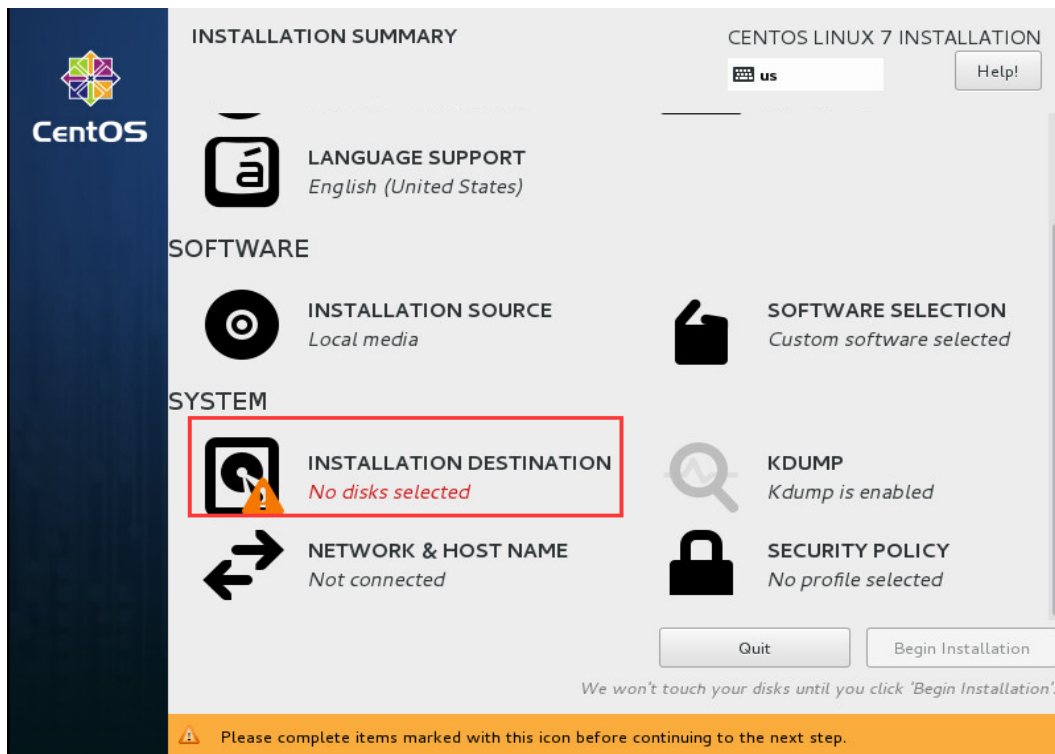
Note: If the above installation GUI not appears but shows a blank screen, please re-connect the XenCenter.



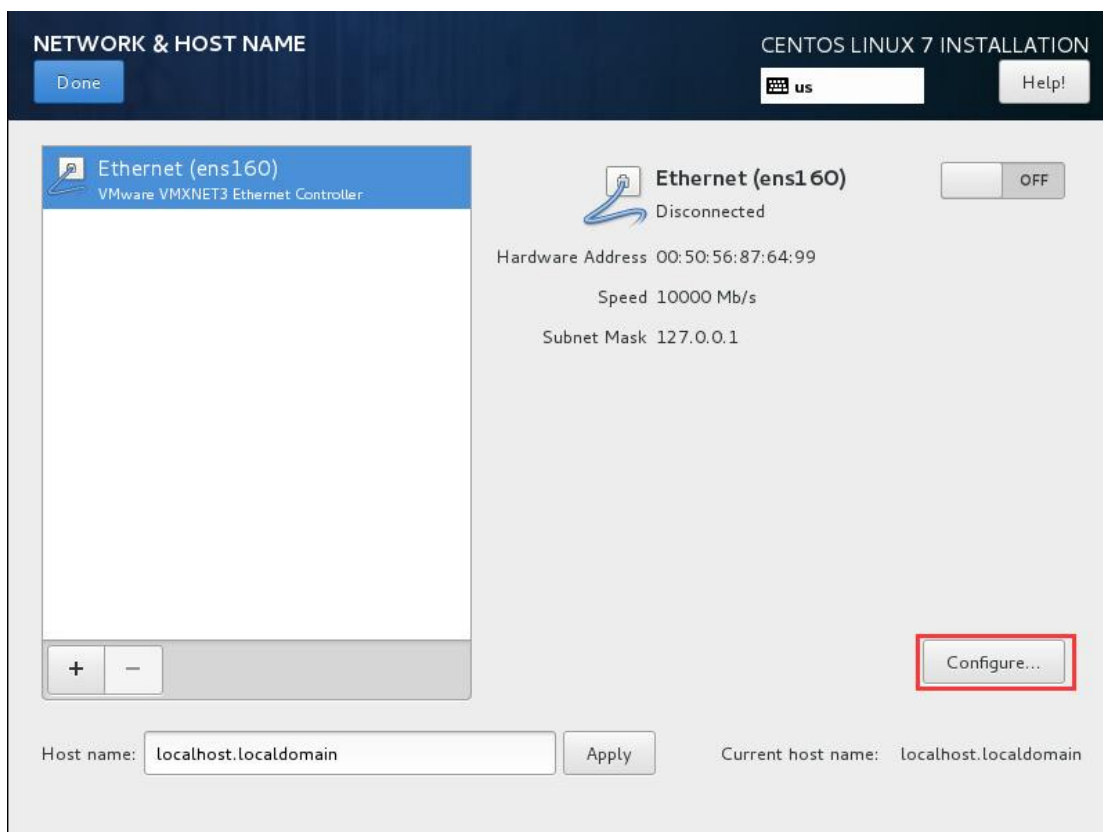
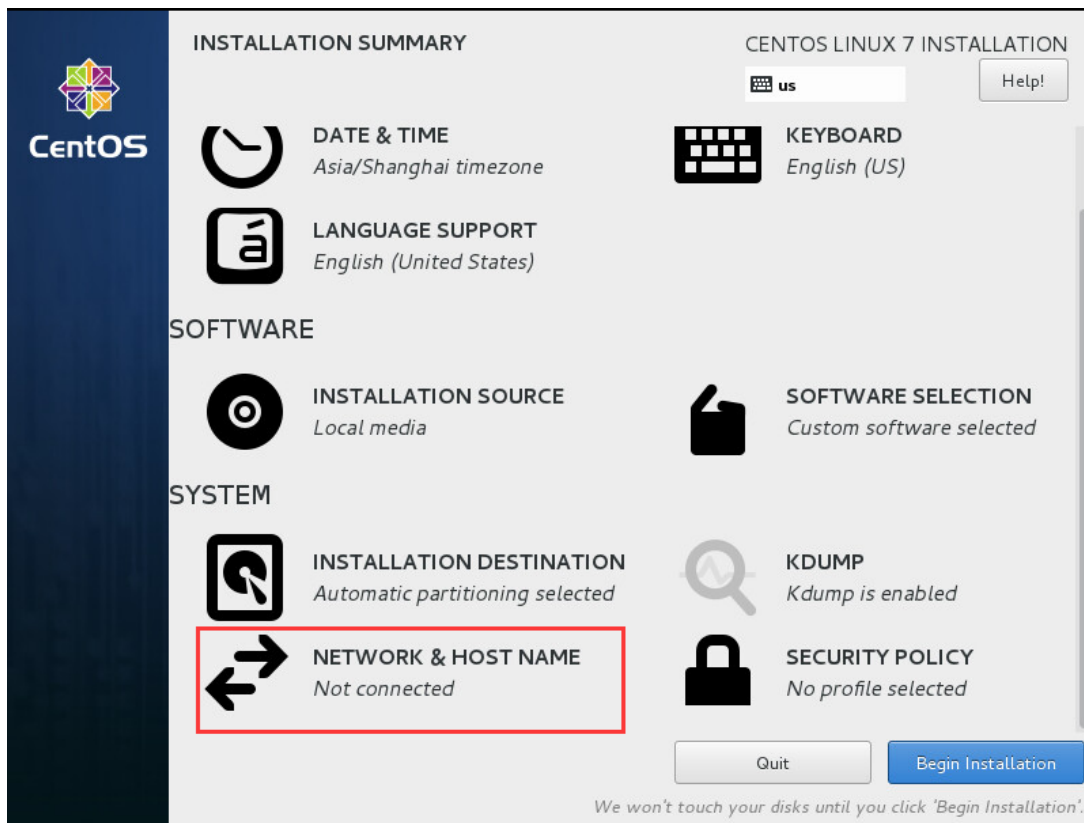
If you are successfully entered the “**INSTALLATION SUMMARY**” page, click “**DATE & TIME**” to set up time for your Vinchin backup server.



Click the “**INSTALLATION DESTINATION**” and choose the 100GB hard disk as system disk and click [Done].



Click "NETWORK&HOST NAME" , then Click "Configure..."



Click “IPv4 Settings” → Choose “Manual” in the “Method” selection→ Click [Add] to enter your network IP address information, example as below. Then click [Save] to save your configuration data.

NETWORK & HOST NAME

Done

CENTOS LINUX 7 INSTALLATION

us

Help!

Editing ens160

Connection name:

ens160

General

Ethernet

802.1X Security

DCB

IPv4 Settings

IPv6 Settings

Method:

Manual

Addresses

Address	Netmask	Gateway	
192.168.65.5	255.255.192.0	192.168.64.1	<div>Add</div> <div>Delete</div>

DNS servers:

192.168.128.2

Search domains:

DHCP client ID:

☐ Require IPv4 addressing for this connection to complete

Routes...

Cancel

Save

Click the red marked button in below to enable the Ethernet connection, you will see the configured network information. Click **[Done]** on the left top to return back to home page.

NETWORK & HOST NAME

Done

CENTOS LINUX 7 INSTALLATION

us

Help!

Ethernet (ens160)

VMware VMXNET3 Ethernet Controller

+

-

Ethernet (ens160)

Connected

ON

Hardware Address 00:50:56:87:64:99

Speed 10000 Mb/s

IP Address 192.168.65.5

Subnet Mask 255.255.192.0

Default Route 192.168.64.1

DNS 192.168.128.2

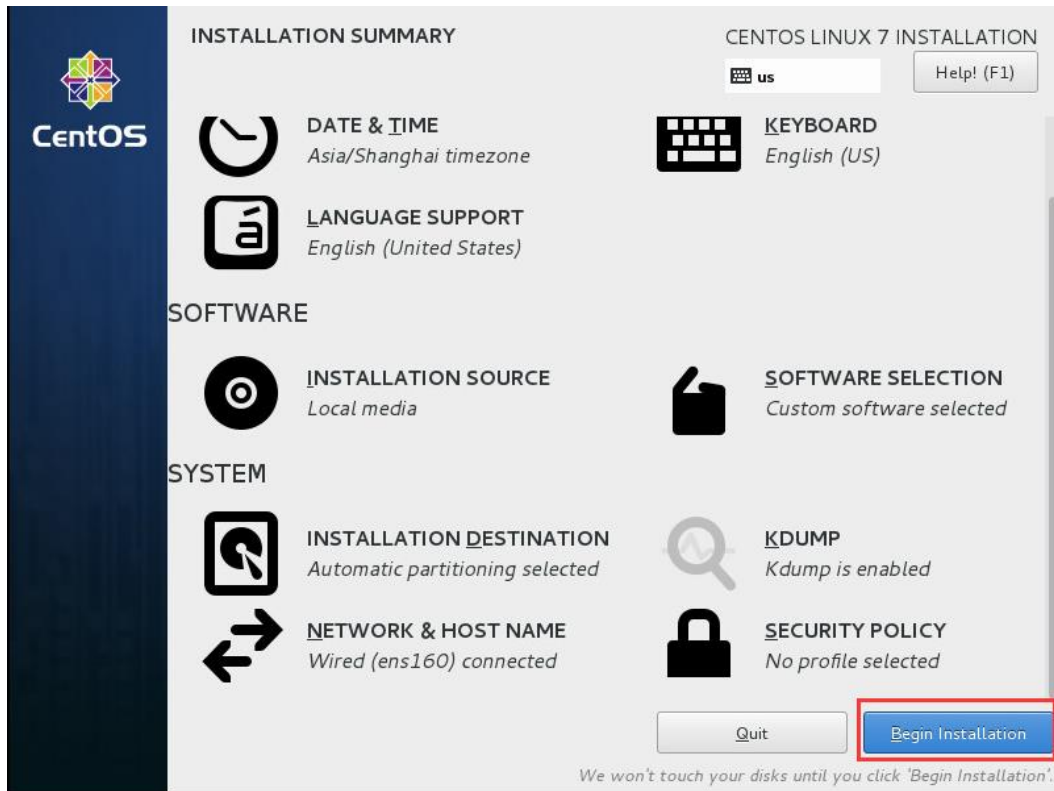
Configure...

Host name: localhost.localdomain

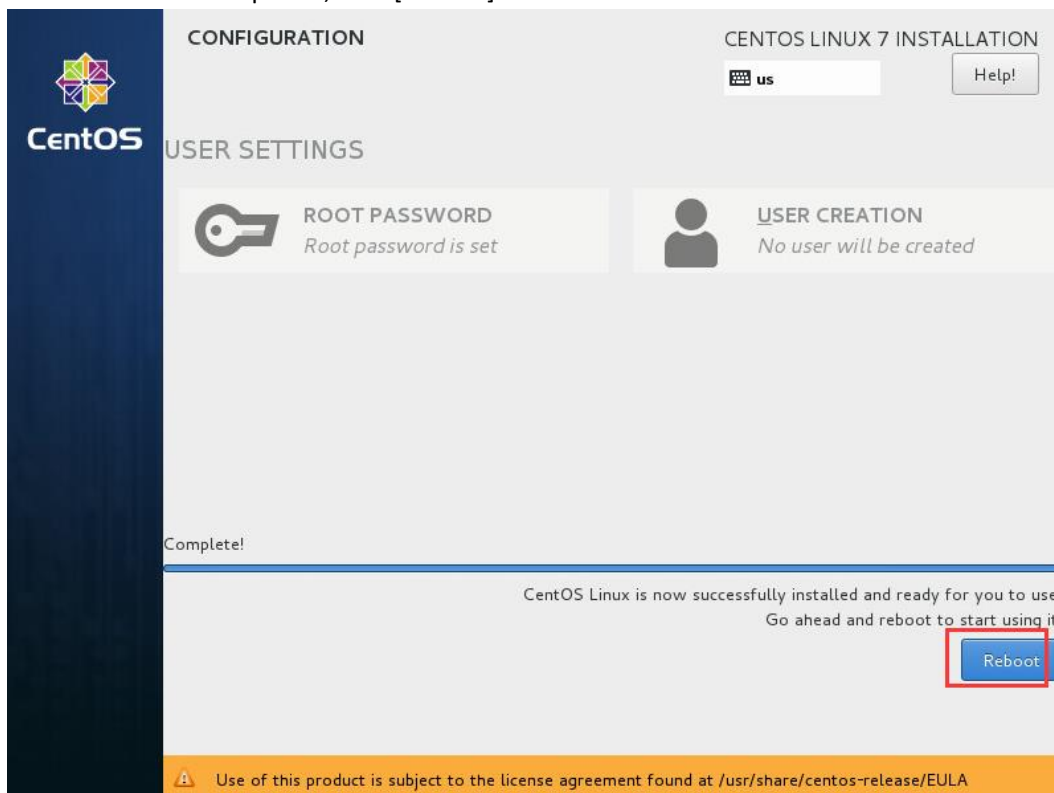
Apply

Current host name: localhost.localdomain

Other options are defaultly configured, directly click **[Begin installation]** to install.



After installation completed, click **[Reboot]** to reboot the VM.



After VM rebooted, you can login to the web console of Vinchin backup server. Enter the IP address of Vinchin backup server to access the web login page. (Google Chrome browser is recommended.)

Web login username: **admin**
Password: **Admin@3R**
Backup server OS username: **root**
Password: **Backup@3R**



Install Backup Node (Optional)

A backup node (slave node) is an individual backup server without web console, it is managed by the web console of vinchin backup server (master node).

In large virtual environment with large volume of data, computing resources and network resources are limited. How to effectively backup the VMs and occupy the minimal resources, Vinchin adopts "multiple backup nodes" method.

Deploying multiple backup nodes in large environment can split the overall computing and storage resources in backup server to realize a horizontal expansion of the resources. Also doing backup concurrently from multiple backup nodes can increase the network transmission bandwidth exponentially and make your backup much faster.

Record Vinchin backup node ISO file [vinchin-node_enterprise-5.0.xxxx.iso](#) to USB disk or CD, detailed installation steps please follow chapter "[Record ISO File](#)".

Note:

1. There is no web console on backup node, all backup nodes are managed by the web console of backup server.
2. The backup node's IP address shall be different from the backup server, but make sure they are connected with each other.

After the backup node is installed successfully, you can login the backup node's OS to modify config files.

Backup node OS username: **root**
Password: **Backup@3R**

Please input Vinchin backup server's IP address following prompts, then reboot backup node OS.

```
[root@localhost ~]# config_server
Current server ip is: 0.0.0.0, Please input new server ip: 192.168.65.68
Need to reboot system now [Y/n]?y
```

After rebooting the backup node OS, log in the backup server's web console with default username: admin, password: Admin@3R. You can view the installed backup node information in the [Resources] → [Backup Node].

The screenshot shows the Vinchin Backup & Recovery web console interface. The left sidebar contains navigation links: Home, Monitor Center, VM Backup/Restore, Backup Copy, Resources (selected), Virtual Infrastructure, Backup Node, Storage, and LAN-Free. The main content area is titled 'Backup Node' and displays a 'Backup Node List' table. The table has columns for No., Node Name, IP Address, Add Time, Deploy Status, and Node Status. Two nodes are listed, both with 'Deployed' status and 'Normal' node status. The IP address '192.168.65.68' for the second node is highlighted with a red box. Below the table, there is a note about contacting support for the backup node installer.

No.	Node Name	IP Address	Add Time	Deploy Status	Node Status
1	localhost.localdomain	192.168.65.52	2019-09-29 20:21:45	Deployed	Normal
2	localhost.localdomain	192.168.65.68	2019-09-29 20:13:25	Deployed	Normal

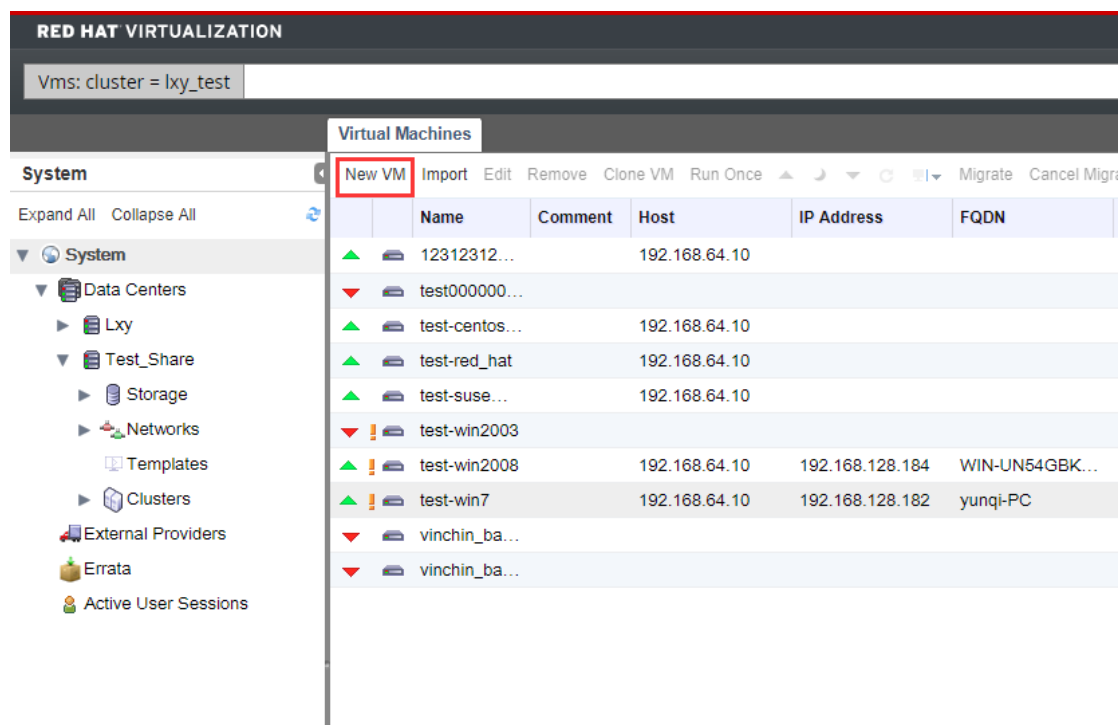
Note: To deploy backup node, please contact support@vinchin.com to get the backup node installer. Follow Quick Installation Guide to complete the installation. After install success, backup node info will be listed here. If you need support during the installation, please contact our support team.

Install on RHV/oVirt

Create New Virtual Machine

To install the Vinchin backup server on a RedHat RHV/oVirt host, first you need to connect the RedHat Virtualization management platform with the host. Then create a new virtual machine via the management platform. Before creating new virtual machine, you need to upload Vinchin Backup & Recovery ISO file to ISO library. Steps are as follows:

Click **"System"**, then click **"New VM"** to create a new virtual machine.



In the **"General"** page, choose **"Linux"** in the **"Operation System"** line, choose **"Desktop"** in the **"Optimized for"** line, type a name for the new VM in the **"Name"** line. Then Click **[OK]** to the next page.

New Virtual Machine

General

System: Cluster (lxy_test), Data Center: Lxy

Initial Run: Template (Blank | (0))

Console: Operating System (Linux)

Host: Instance Type (Custom)

High Availability: Optimized for (Desktop)

Resource Allocation: Name (vinchin_backup)

Boot Options: VM ID

Random Generator: Description

Custom Properties: Comment

Icon: ☐ Stateless ☐ Start in Pause Mode ☐ Delete Protection

Foreman/Satellite: Instance Images (Attach, Create, +, -)

Instantiate VM network interfaces by picking a vNIC profile.

Hide Advanced Options

OK Cancel

Click **“Boot Options”** to enter boot options page, under the **“Boot Sequence”** options choose **“CD-ROM”** in the **“First Device”** line, enable **“Attach CD”** and choose VINCHIN Backup & Recovery ISO file from the ISO library. Then click [OK] to the next page.

Edit Virtual Machine

Boot Options

System: Cluster (lxy_test), Data Center: Lxy

Initial Run: Template (Blank | (0))

Console: Operating System (Linux)

Host: Instance Type (Custom)

High Availability: Optimized for (Server)

Resource Allocation: Name (vinchin_backup)

Boot Options: VM ID

Random Generator: Description

Custom Properties: Comment

Icon: ☒ Attach CD ☐ Enable menu to select boot device

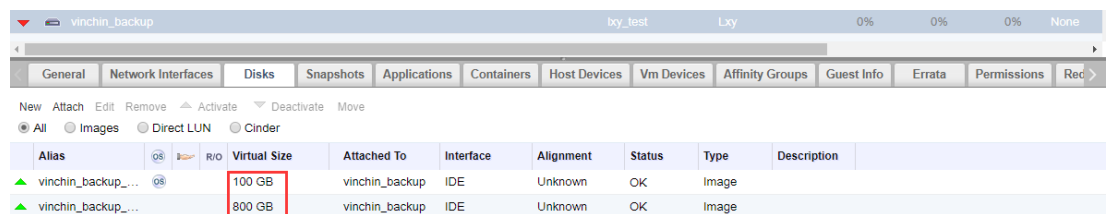
Foreman/Satellite: Instance Images (Attach, Create, +, -)

Instantiate VM network interfaces by picking a vNIC profile.

Hide Advanced Options

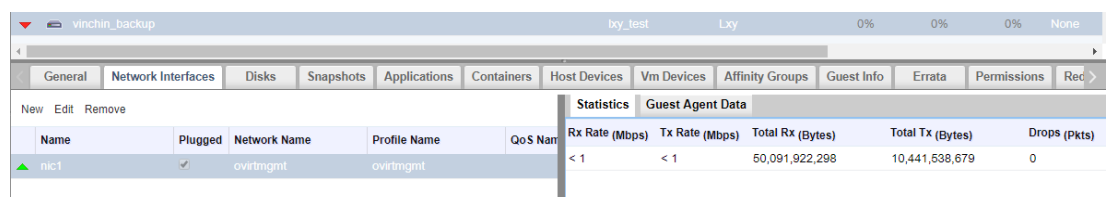
OK Cancel

Set two storage disks for the VM, one as system disk, the other as backup storage. System disk capacity 100+ GB is recommended, backup storage capacity can be set according to your actual demands.



Alias	Virtual Size	Attached To	Interface	Alignment	Status	Type	Description
vinchin_backup_...	100 GB	vinchin_backup	IDE	Unknown	OK	Image	
vinchin_backup_...	800 GB	vinchin_backup	IDE	Unknown	OK	Image	

Add at least one network interface for the new VM.



Name	Plugged	Network Name	Profile Name	QoS Name
nic1	<input checked="" type="checkbox"/>	ovirtmgmt	ovirtmgmt	

Install Backup Server

Please follow chapter “[Install on XenServer – Install Backup Server](#)”

Install Backup Node (Optional)

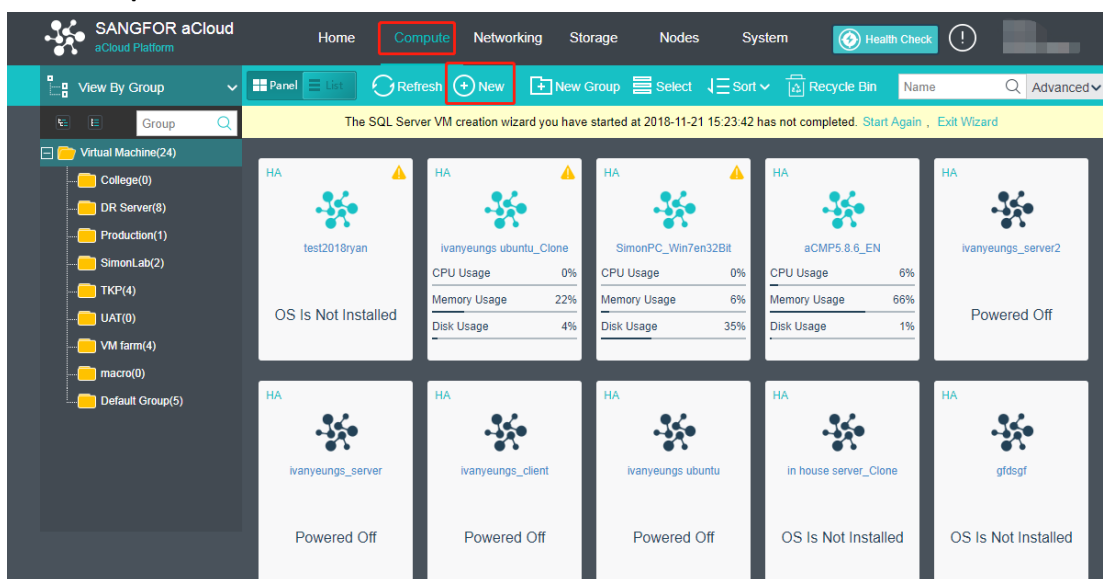
Please follow chapter “[Install on XenServer – Install Backup Node \(Optional\)](#)”

Install on Sangfor HCI

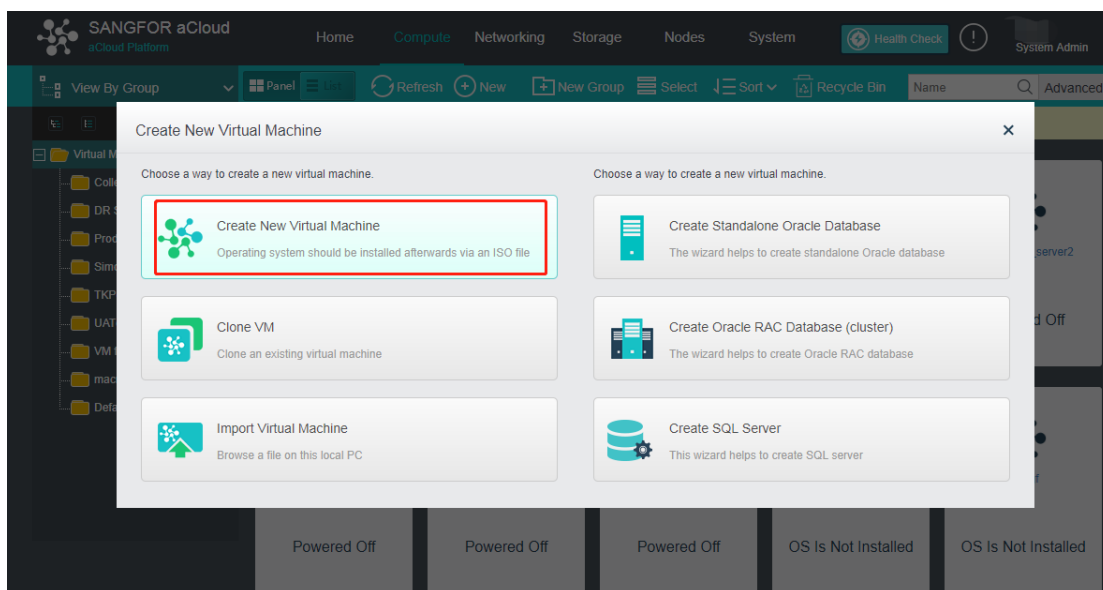
Create New Virtual Machine

To install the Vinchin backup server on a SANGFOR HCI host, first you need to connect the SANGFOR HCI management platform with the host. Then create a new virtual machine via the management platform. Before creating new virtual machine, you need to upload Vinchin Backup & Recovery ISO file to ISO library. Steps are as follows:

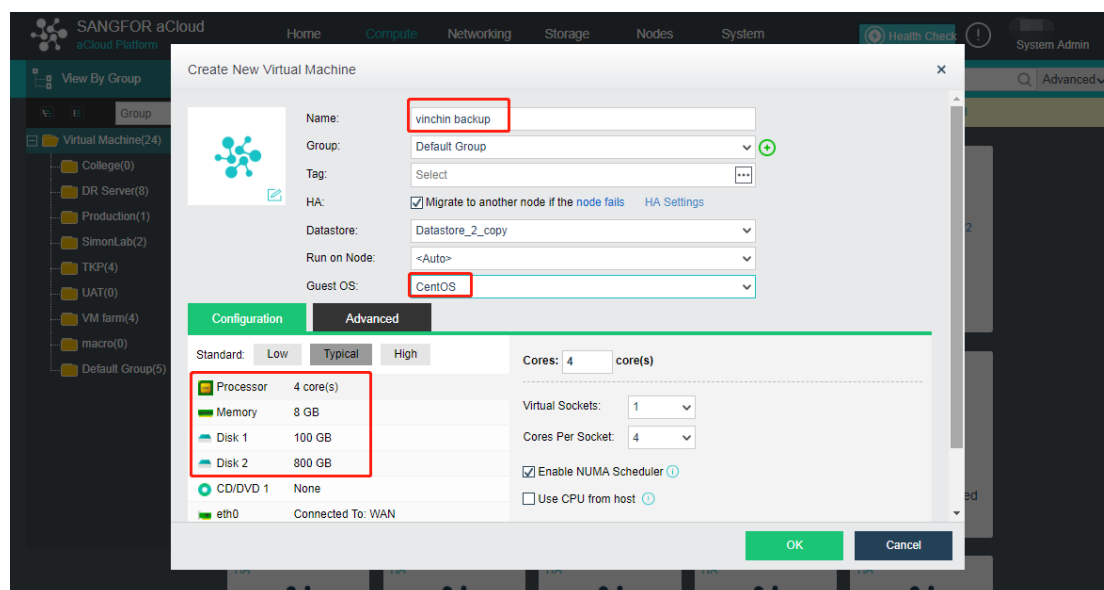
Click **“Compute”**, then click **“New”** to create a new virtual machine.



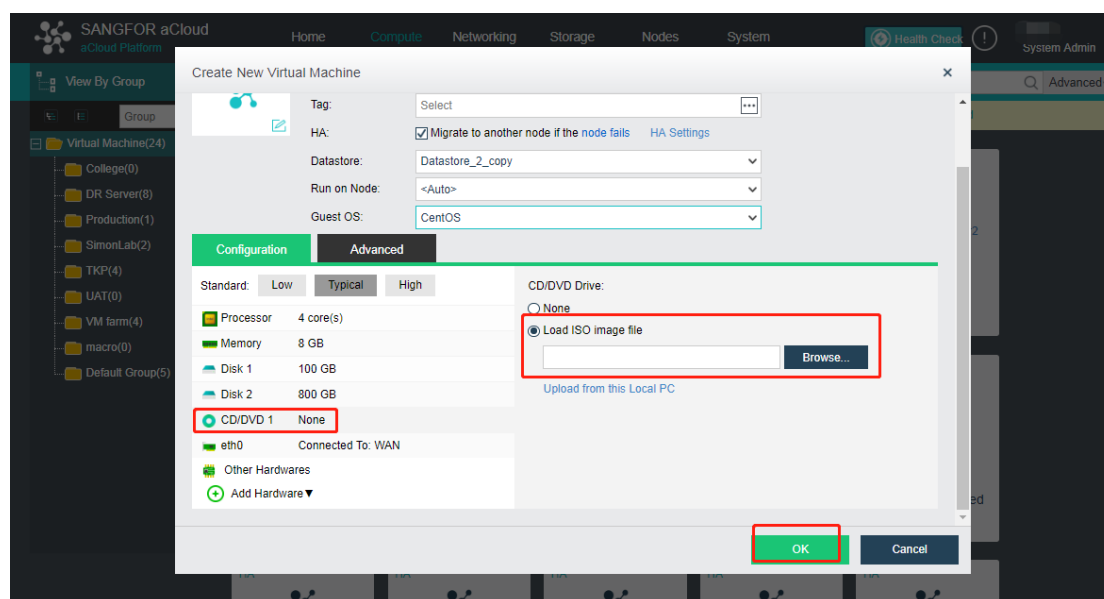
Click **“Create New Virtual Machine”**



Type a name for the new virtual machine, select “CentOS” as Guest OS. Make sure processor at least 4 cores, memory 8GB. Add two disk, one disk at least 100GB as system disk, another disk as data backup repository (allocate a space according to your needs).



Then click “CD/DVD 1” to load the vinchin ISO image file, then click “OK”.



Install Backup Server

Please follow chapter “[Install on XenServer – Install Backup Server](#)”

Install Backup Node (Optional)

Please follow chapter "[Install on XenServer – Install Backup Node \(Optional\)](#)"

Install on Other Platforms

Create New Virtual Machine

For **Hyper-v**, **Openstack**, **Huawei FusionCompute** and **Inspur InCloud Sphere** platforms, please create a new virtual machine before installing Vinchin Backup & Recovery on this platform.

Install Backup Server

Please follow chapter "[Install on XenServer – Install Backup Server](#)"

Install Backup Node (Optional)

Please follow chapter "[Install on XenServer – Install Backup Node \(Optional\)](#)"



Contact Information

Head Office

F14, No. 19, 3rd Tianfu Street,
Hi-Tech Zone, Chengdu, China.
P.C. 610041

Sales

Tel: +86-28-85530156
Email: sales@vinchin.com

Support

Tel: +86-400-9955-698
Email: support@vinchin.com

Website

www.vinchin.com