



VINCHIN BACKUP & RECOVERY V4.0

Quick Installation Guide

Install on Physical Server | 2018/09

CONTENTS

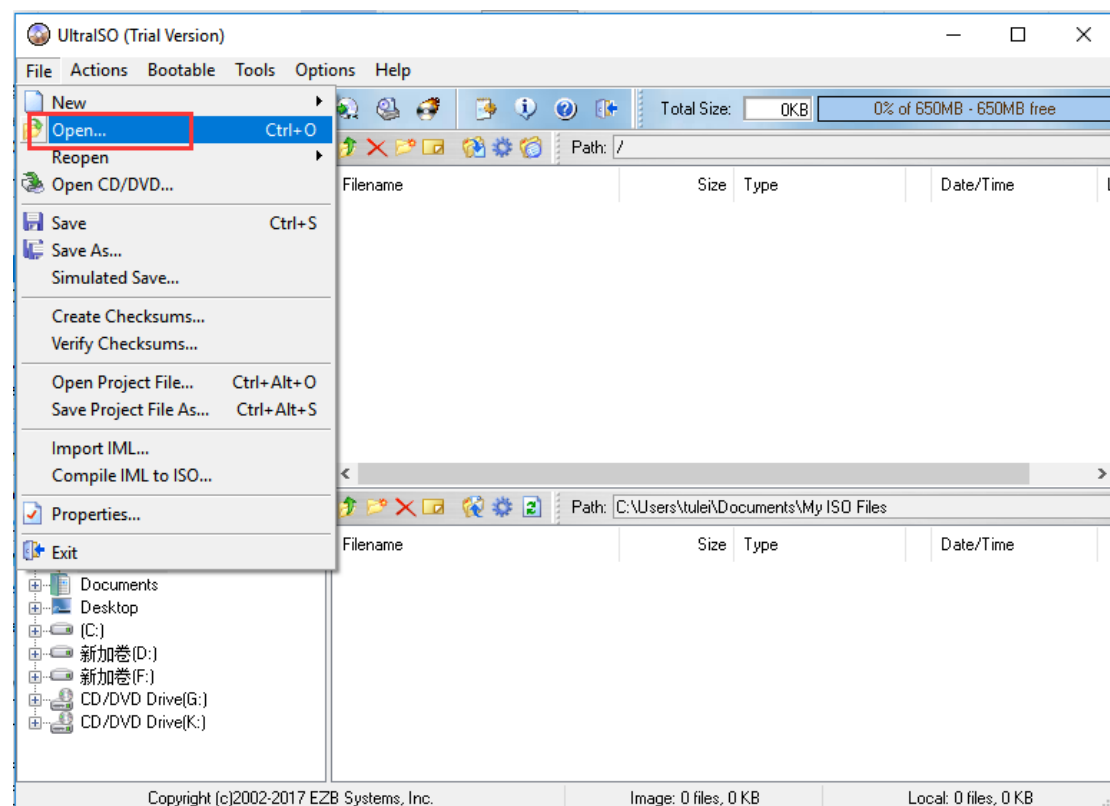
Record iSO File	2
Record to USB Disk Guide	2
Record to CD Guide	4
Install Backup Server	7
Install Backup Plug-in	13
Install Backup Node (Optional)	15

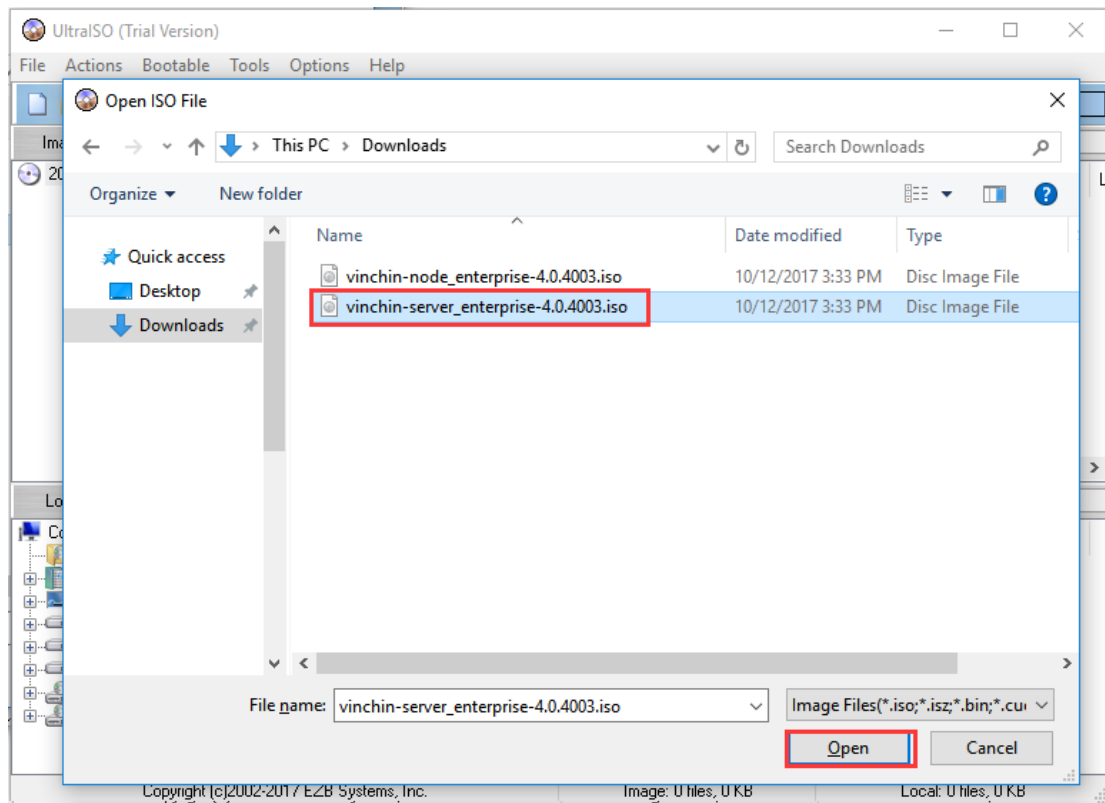
Record ISO File

Installing Vinchin backup server can be done via USB disk or CD. In this installation guide we use UltraISO record tool to record the ISO file.

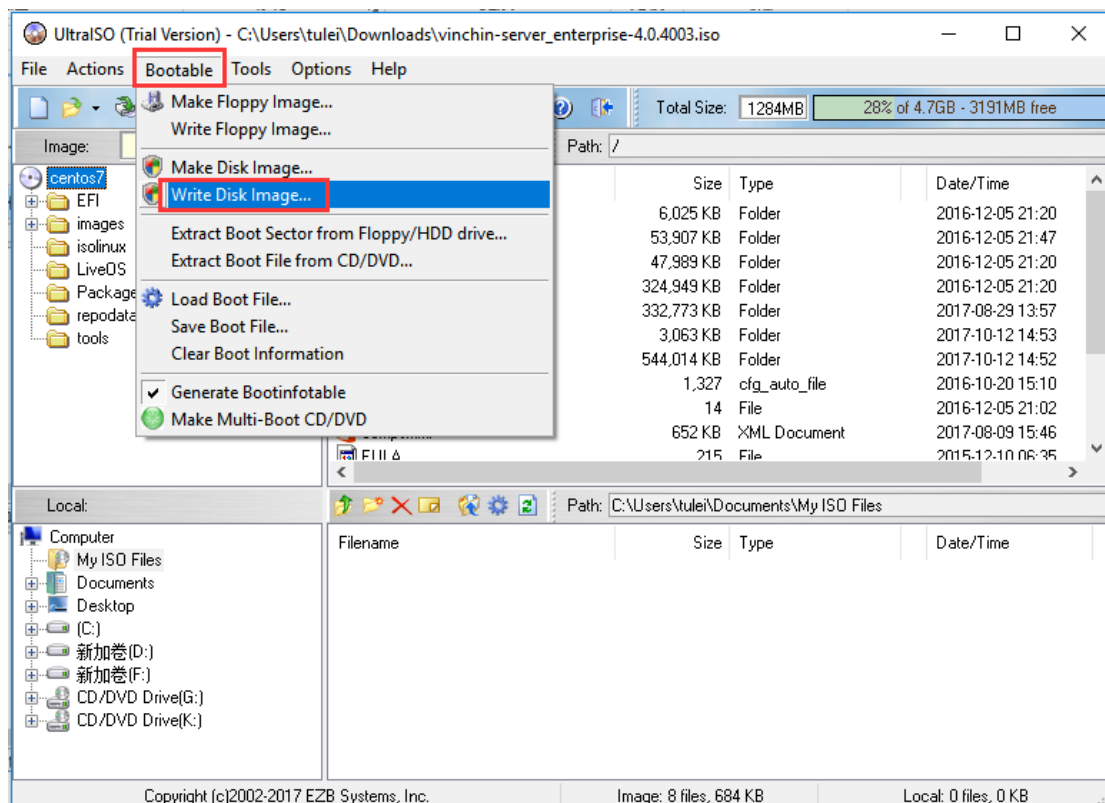
Record to USB Disk Guide

Record the ISO file to USB disk will format the USB disk, please use a non-data USB disk for recording. Connect the USB disk with PC, open the record tool UltraISO. Click [File] → [Open...]. Choose Vinchin backup server ISO file and click [Open].

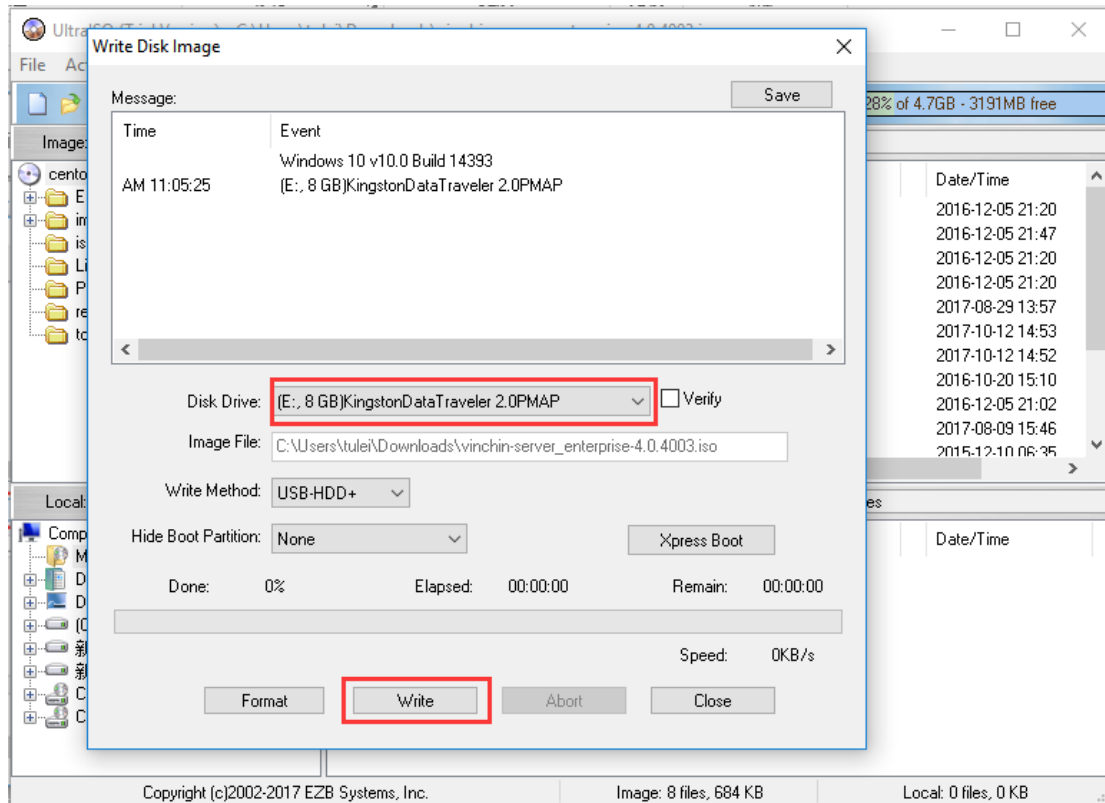




Click **[Bootable]** → **[Write Disk Image...]**



Choose the right USB disk and click **[Write]** to start writing.

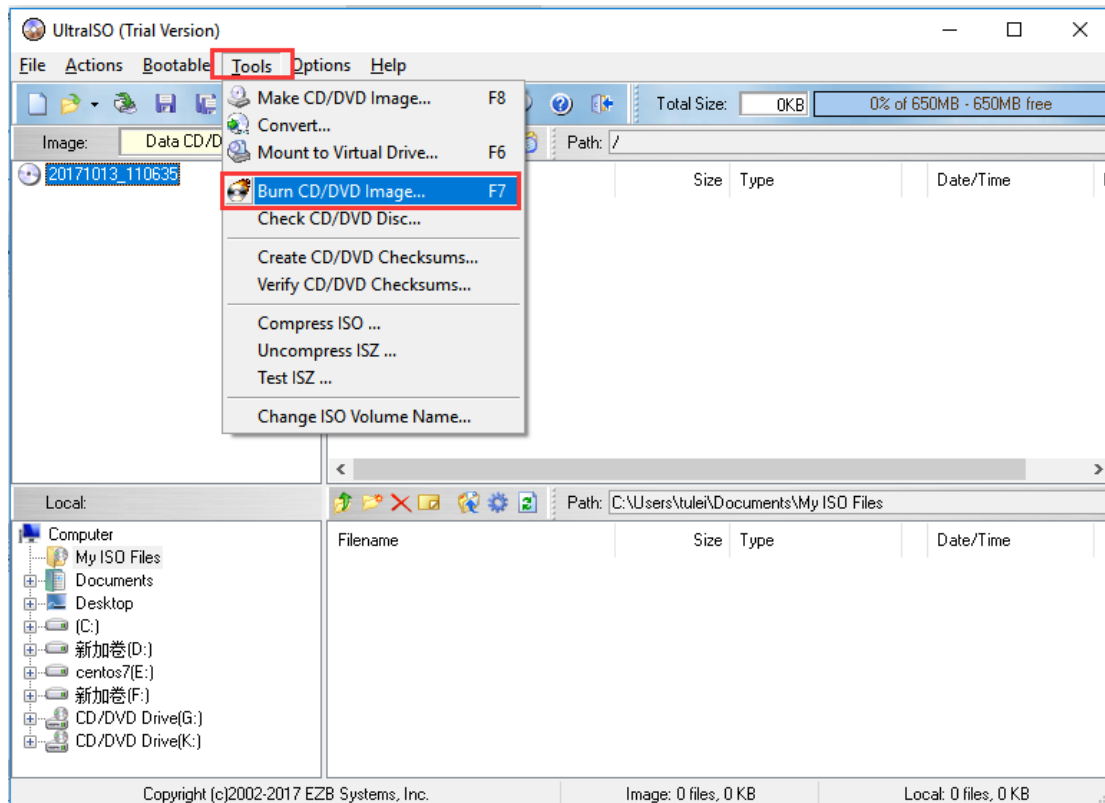


Note:

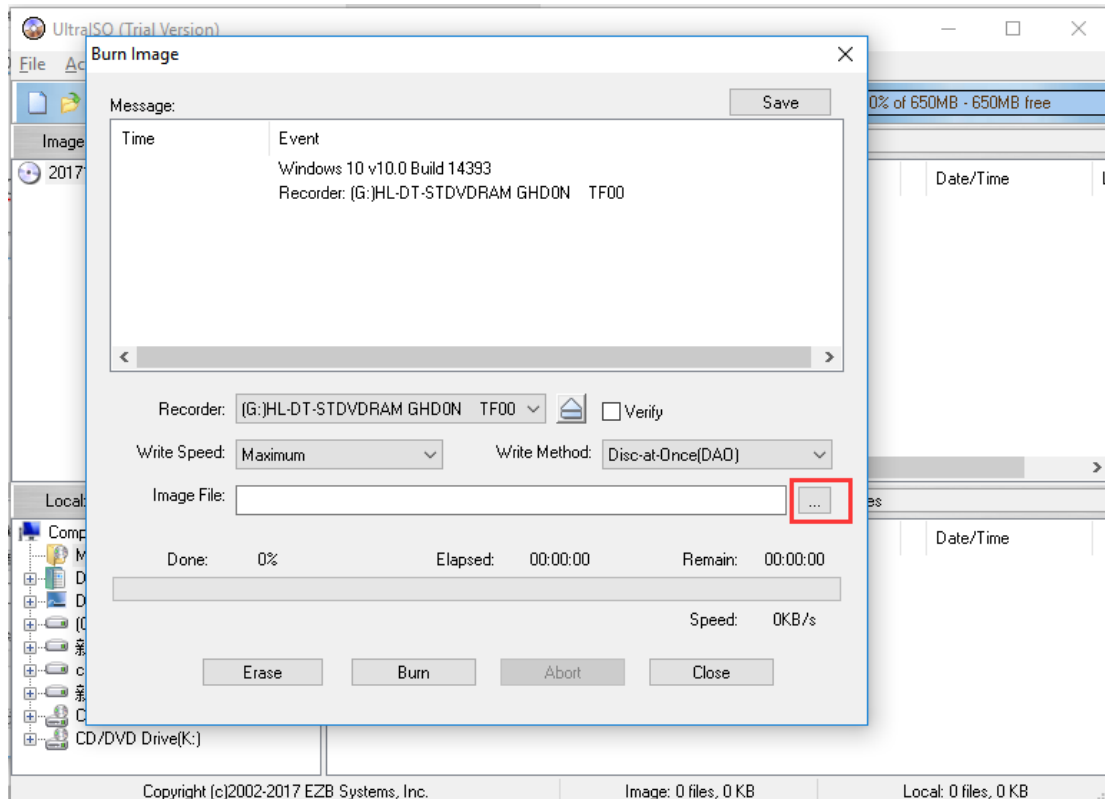
Some of the servers may not identify the installed USB disk, if installation via USB disk is failed, please change to install via CD.

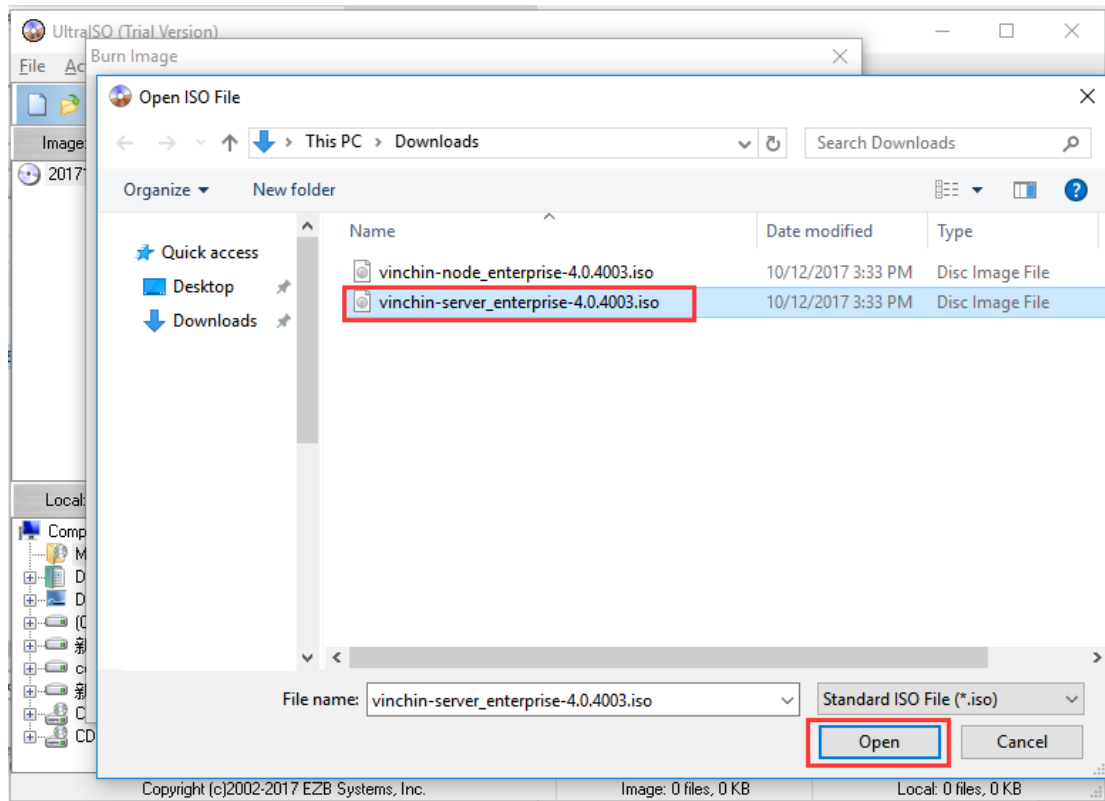
Record to CD Guide

Insert CD into computer CD driver, then open the record tool UltraISO, choose [Tool] → [Burn CD/DVD Image...]

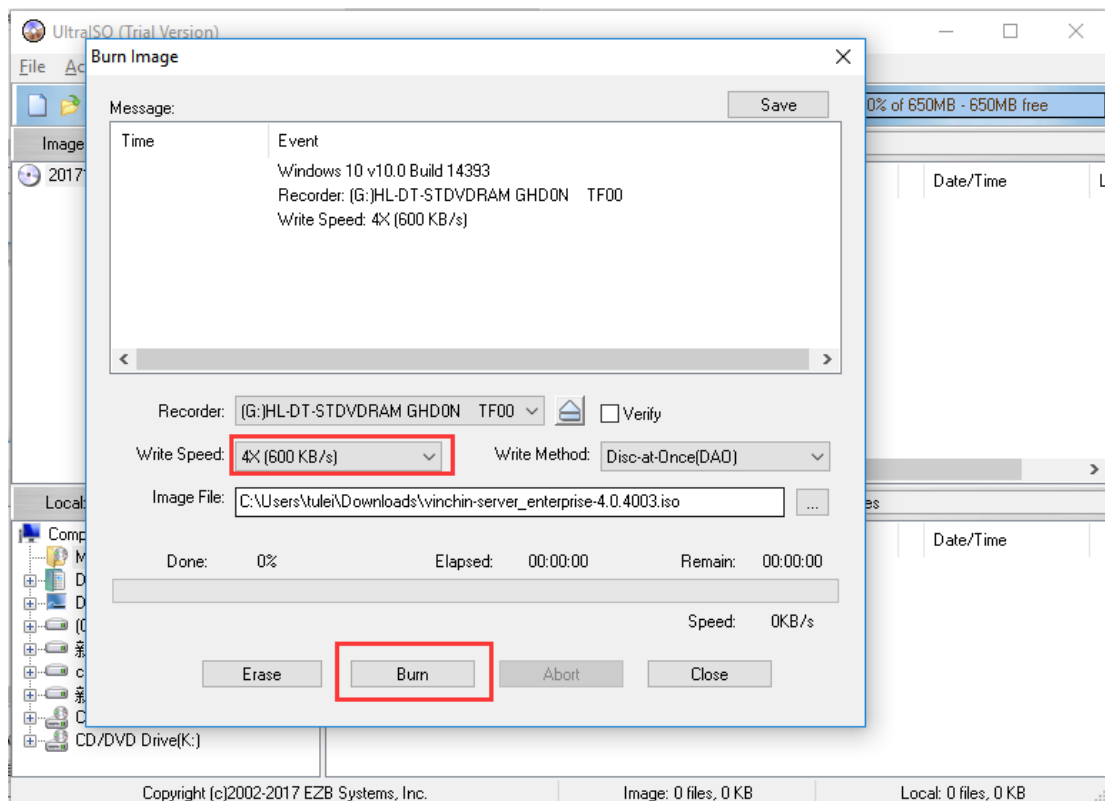


Click “...” to choose Vinchin backup server ISO file and click **[Open]**.





Choose the lowest writing speed, click[Burn].



Install Backup Server

Before installing Vinchin backup server, please set the guidance mode of server BIOS as “legacy”, and set the USB disk guide or CD guide as first boot option.

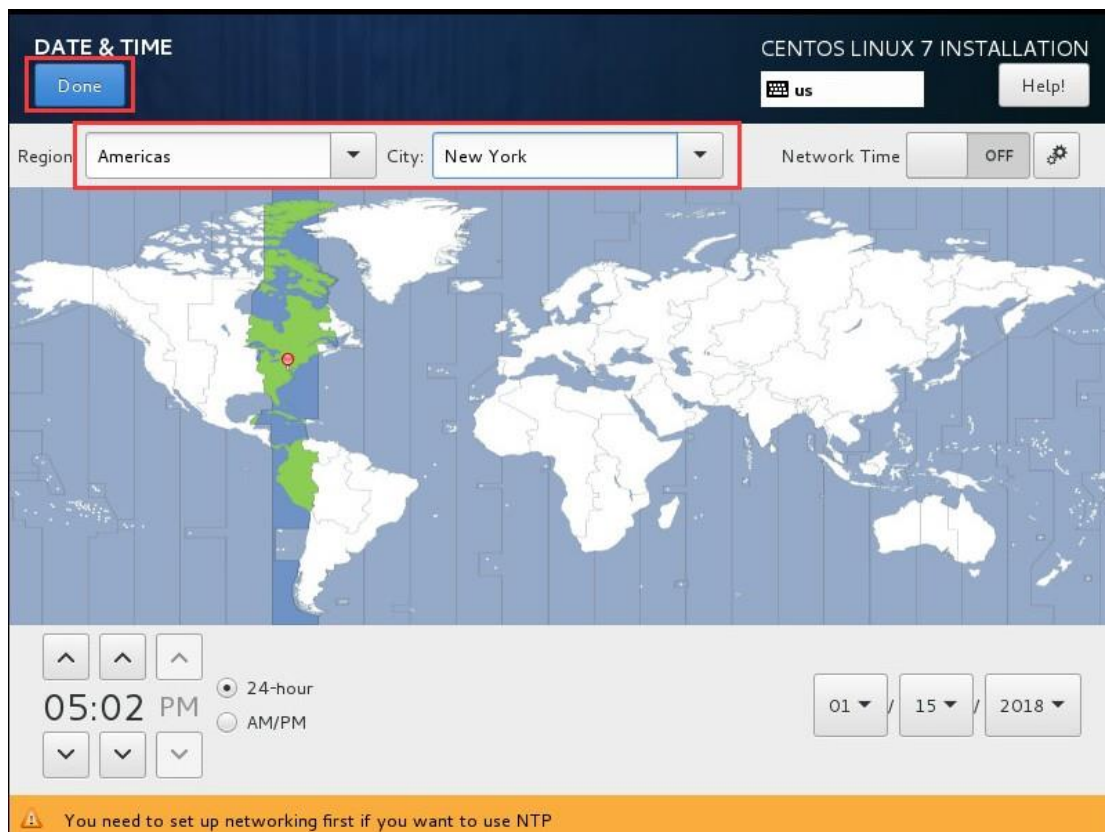
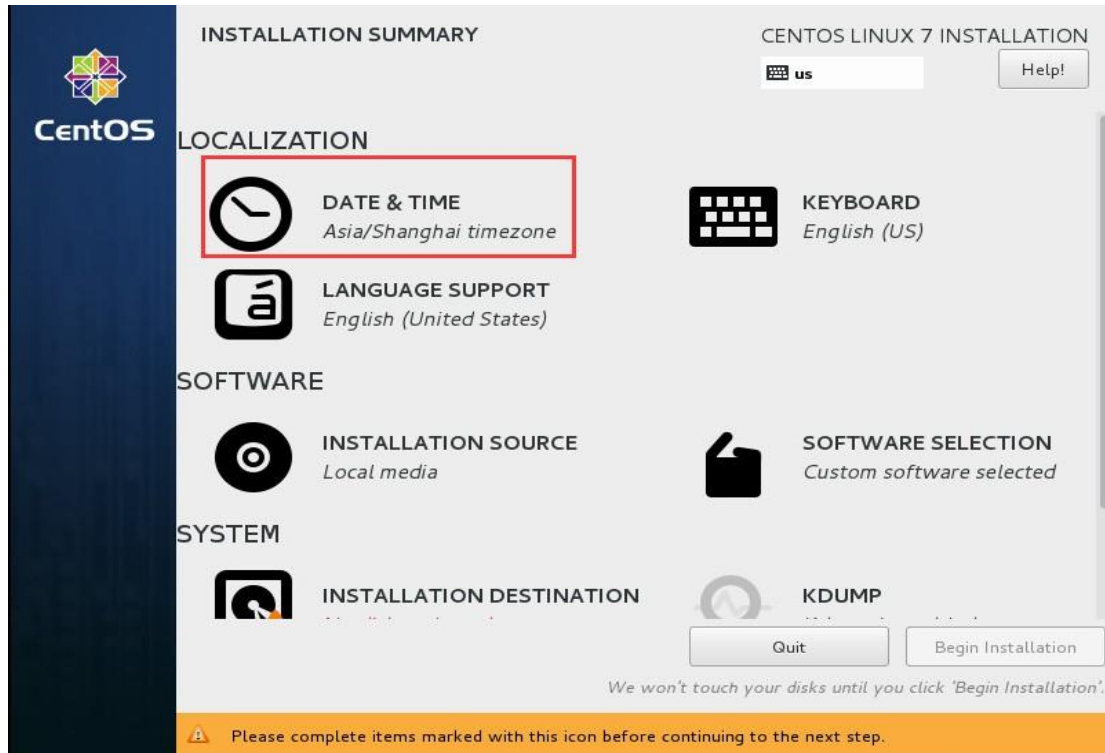
Suggested Server Configuration:

4 Cores CPU, 8GB RAM, Gigabit NIC, 100G system disk, data disk should support partition, local disk, LVM, FC, ISCSI, NFS, CIFS

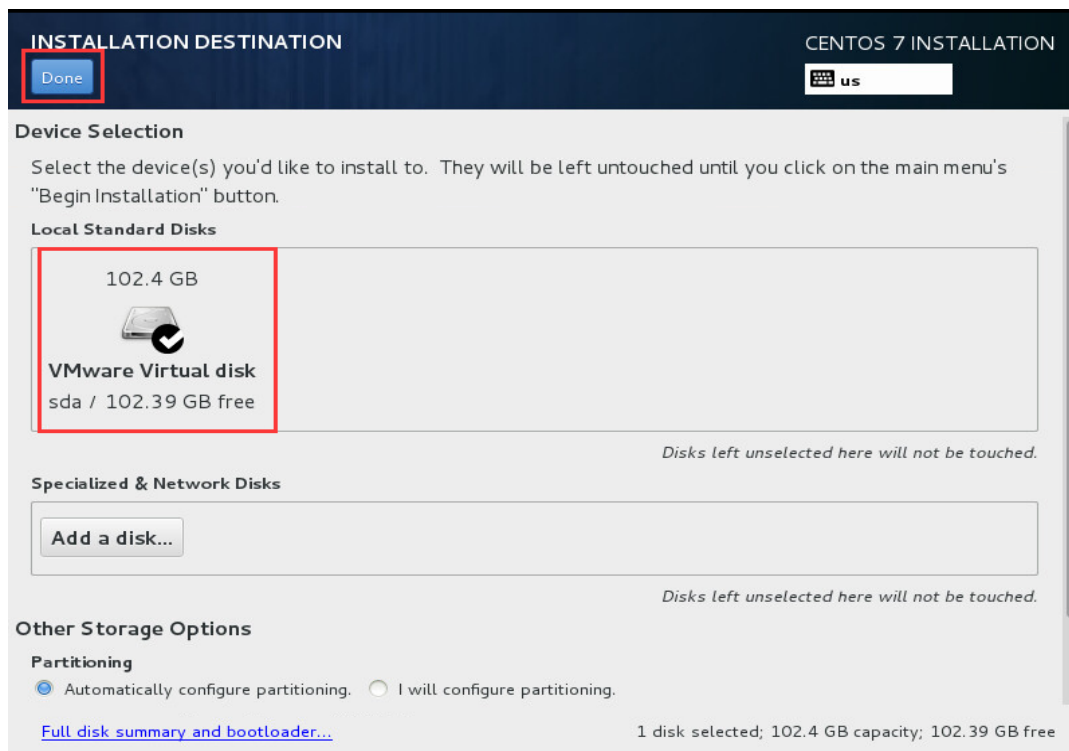
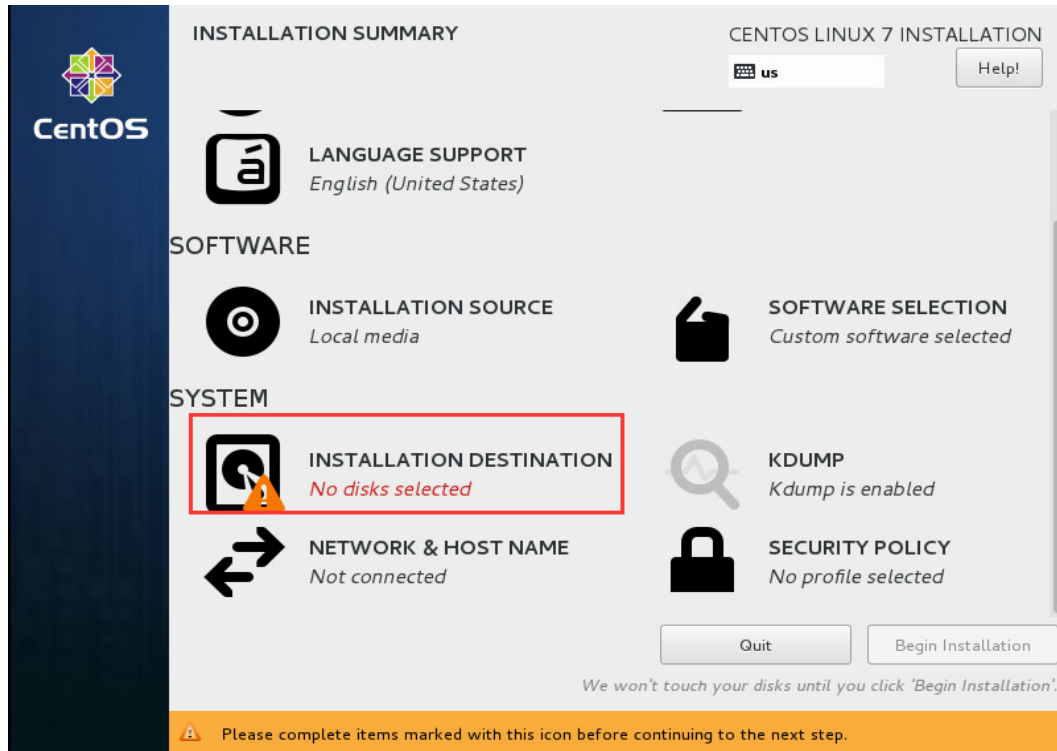
Choose “**Install CentOS 7**” and press [Enter] button on the keyboard. Then a few seconds later, you will be entering the “**INSTALLATION SUMMARY**” page.



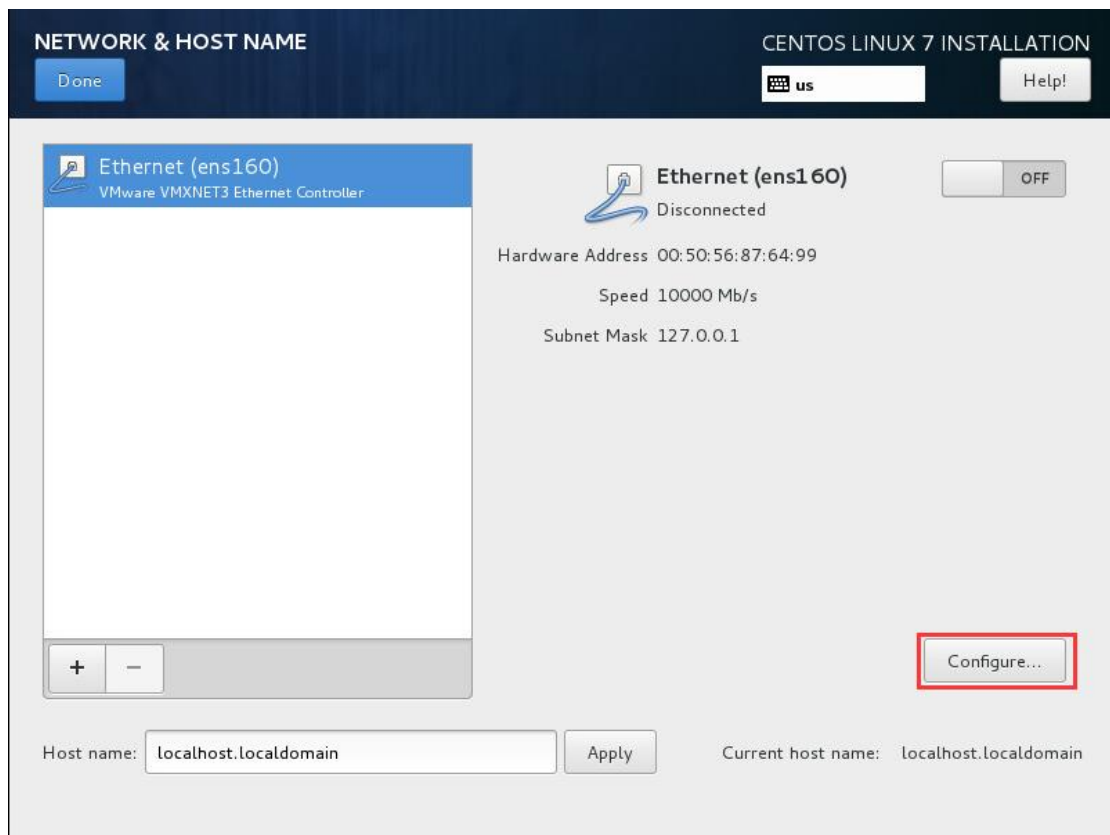
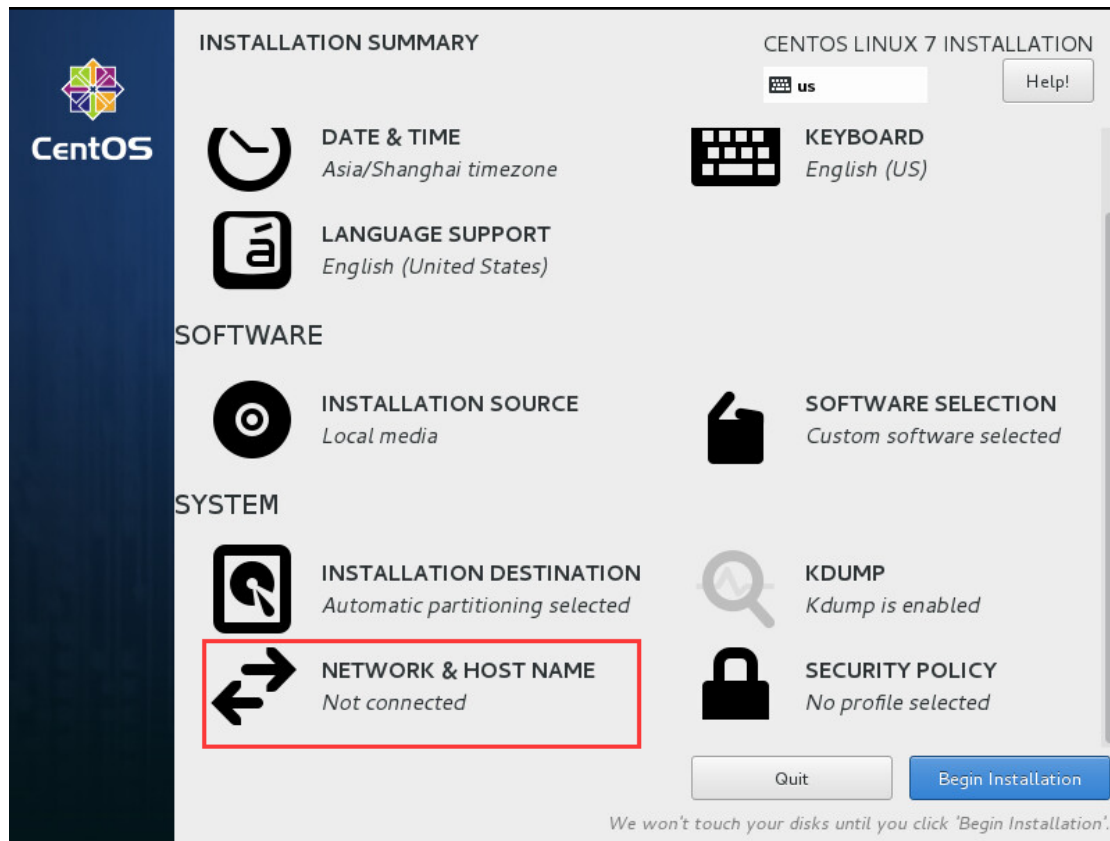
Click “**DATE & TIME**” to set up time for your Vinchin backup server.



Click the “**INSTALLATION DESTINATION**”, choose one disk as system disk (if multiple disk exists, you can only choose one disk to install the Vinchin backup server, other disks can be used as backup repositories), 100+GB system disk is suggested. Then Click [**Done**].



Click **"NETWORK&HOST NAME"** , then Click **[Configure...]**. Click **"IPv4 Settings"** → Choose **"Manual"** in the "Method" selection → Click **[Add]** to enter your network IP address information, example as below. Then click **[Save]** to save your configuration data.



Done

us

Help!

Editing ens160

Connection name: ens160

General

Ethernet

802.1X Security

DCB

IPv4 Settings

IPv6 Settings

Method: Manual

Addresses

Address	Netmask	Gateway	
192.168.65.5	255.255.192.0	192.168.64.1	<div>Add</div> <div>Delete</div>

DNS servers: 192.168.128.2

Search domains:

DHCP client ID:

☐ Require IPv4 addressing for this connection to complete

Routes...

Cancel

Save

Click the red marked button in below to enable the Ethernet connection, you will see the configured network information. Click **[Done]** on the left top to return back to home page.

Done

us

Help!

Ethernet (ens160)

VMware VMXNET3 Ethernet Controller

+

-

Ethernet (ens160)

Connected

ON

Hardware Address 00:50:56:87:64:99

Speed 10000 Mb/s

IP Address 192.168.65.5

Subnet Mask 255.255.192.0

Default Route 192.168.64.1

DNS 192.168.128.2

Configure...

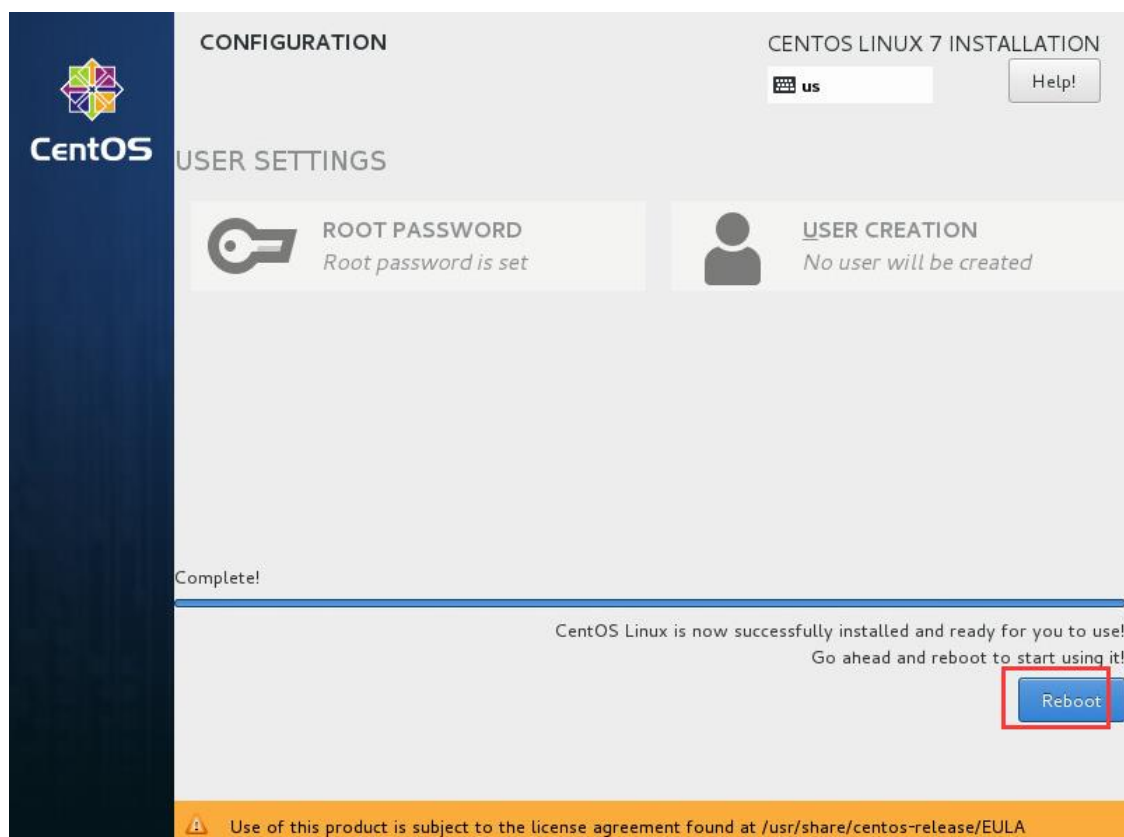
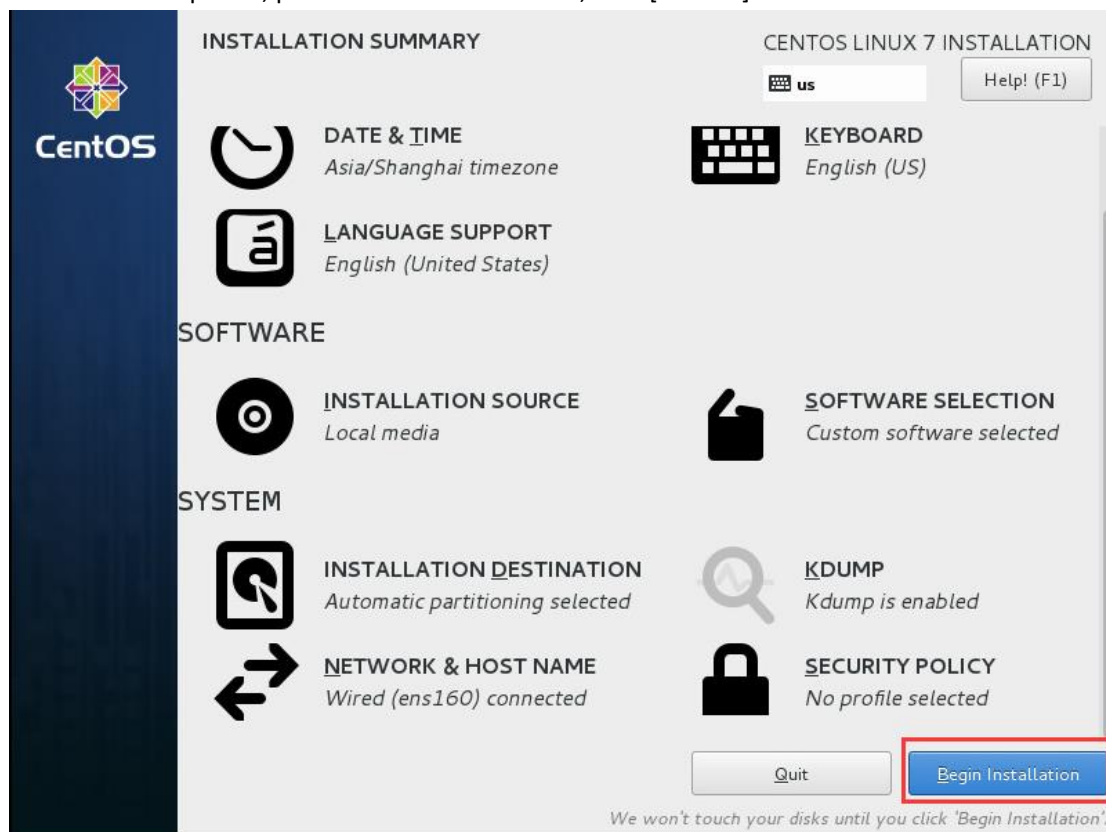
Host name: localhost.localdomain

Apply

Current host name: localhost.localdomain

VINCHIN Backup & Recovery | Quick Installation Guide V4.0 | 11

Other options are defaultly configured, directly click [**Begin installation**] to install. After installation completed, pull out the USB disk or CD, click [**Reboot**] to reboot the VM.



After VM rebooted, you can login to the web console of Vinchin backup server. Enter the IP address of Vinchin backup server to access the web login page. (**Google Chrome browser is recommended.**)

Web login username: admin

Password: 123456

Backup server OS username: root

Password: 12345678



IMPORTANT:

When backing up VMs under XenServer and KVM environments, you need to install a “Backup Plug-in” in each host where runs your business systems.

Install Backup Plug-in

Download the “backup plug-in” from the Vinchin web login page. Click [**Download Backup Plug-in**] → select your hypervisor and corresponding version, e.g. “Citrix XenServer 6.2”, then click [**Download**]. Copy the downloaded plugin to your XenServer or KVM host root directory for installation.



Installation/Uninstallation of **XenServer, InCloud Sphere** backup plugin:

Install command: **rpm -ivh vxe-backup-agent-xxxx.rpm**

```
[root@xenserver-zksijrpu ~]# rpm -ivh vxe-backup-agent-4.0-4762.xe.6.5.0.and.7.0.0.x86_64.rpm
Preparing... ##### [100%]
Updating / installing...
 1:vxe-backup-agent-4.0-4762.xe.6.5.##### [100%]
Restarting vxe_backup_agent (via systemctl): [ OK ]
iptables: Saving firewall rules to /etc/sysconfig/iptables:[ OK ]
[root@xenserver-zksijrpu ~]#
```

Uninstall command: **rpm -e vxe-backup-agent**

```
[root@xenserver-zksijrpu ~]# rpm -e vxe-backup-agent
Stopping vxe_backup_agent (via systemctl): [ OK ]
[root@xenserver-zksijrpu ~]#
```

Installation/Uninstallation of **RHV/Ovirt, H3C CAS, Sangfor HCI, OpenStack** backup plugin:

Unzip the plugin file command: **tar -zxvf vinchin-kvm-backup-xxxx.tar**

Unzip directory enter command: **cd vinchin-kvm-backup-xxxx**

Install command: **./kvm_backup_patch_install**

Uninstall command: **./kvm_backup_patch_uninstall**

```

root@cvknode:~#
root@cvknode:~# ls
vinchin-kvm-backup-patch-4.0.3968-Ubuntu.12-x86_64.tar.gz vmdata
root@cvknode:~# tar -zxvf vinchin-kvm-backup-patch-4.0.3968-Ubuntu.12-x86_64.tar
.gz
vinchin-kvm-backup-patch-4.0.3968-Ubuntu.12-x86_64/
vinchin-kvm-backup-patch-4.0.3968-Ubuntu.12-x86_64/kvm_virt_server.service
vinchin-kvm-backup-patch-4.0.3968-Ubuntu.12-x86_64/kvm_backup_service.service.de
bian
vinchin-kvm-backup-patch-4.0.3968-Ubuntu.12-x86_64/kvm_virt_server.service.old
vinchin-kvm-backup-patch-4.0.3968-Ubuntu.12-x86_64/bin/
vinchin-kvm-backup-patch-4.0.3968-Ubuntu.12-x86_64/kvm_virt_server
vinchin-kvm-backup-patch-4.0.3968-Ubuntu.12-x86_64/conf/
vinchin-kvm-backup-patch-4.0.3968-Ubuntu.12-x86_64/conf/certificate.pem
vinchin-kvm-backup-patch-4.0.3968-Ubuntu.12-x86_64/conf/kvm_backup_service.conf.
xml
vinchin-kvm-backup-patch-4.0.3968-Ubuntu.12-x86_64/conf/private_key.pem
vinchin-kvm-backup-patch-4.0.3968-Ubuntu.12-x86_64/conf/kvm_virt_server.conf.xml
vinchin-kvm-backup-patch-4.0.3968-Ubuntu.12-x86_64/kvm_backup_watch_dog.sh
vinchin-kvm-backup-patch-4.0.3968-Ubuntu.12-x86_64/kvm_backup_watch_dog.service.
debian
vinchin-kvm-backup-patch-4.0.3968-Ubuntu.12-x86_64/kvm_backup_service
vinchin-kvm-backup-patch-4.0.3968-Ubuntu.12-x86_64/kvm_backup_service.service
vinchin-kvm-backup-patch-4.0.3968-Ubuntu.12-x86_64/kvm_backup_patch_uninstall
vinchin-kvm-backup-patch-4.0.3968-Ubuntu.12-x86_64/kvm_backup_service.service.ol
d
vinchin-kvm-backup-patch-4.0.3968-Ubuntu.12-x86_64/kvm_virt_server.service.debia
n
vinchin-kvm-backup-patch-4.0.3968-Ubuntu.12-x86_64/kvm_backup_patch_install
vinchin-kvm-backup-patch-4.0.3968-Ubuntu.12-x86_64/lib/
vinchin-kvm-backup-patch-4.0.3968-Ubuntu.12-x86_64/lib/libcurl.so.4.4.0
vinchin-kvm-backup-patch-4.0.3968-Ubuntu.12-x86_64/lib/libvirt.so
vinchin-kvm-backup-patch-4.0.3968-Ubuntu.12-x86_64/lib/libjsoncpp.so.1.6.2
vinchin-kvm-backup-patch-4.0.3968-Ubuntu.12-x86_64/lib/libaudit.so.0
vinchin-kvm-backup-patch-4.0.3968-Ubuntu.12-x86_64/lib/libjsoncpp.so
vinchin-kvm-backup-patch-4.0.3968-Ubuntu.12-x86_64/lib/libaudit.so.0.0.0
vinchin-kvm-backup-patch-4.0.3968-Ubuntu.12-x86_64/lib/libjsoncpp.so.1
vinchin-kvm-backup-patch-4.0.3968-Ubuntu.12-x86_64/lib/libvirt.so.0.2004.0
vinchin-kvm-backup-patch-4.0.3968-Ubuntu.12-x86_64/lib/libvirt.so.0
root@cvknode:~# cd vinchin-kvm-backup-patch-4.0.3968-Ubuntu.12-x86_64/
root@cvknode:~/vinchin-kvm-backup-patch-4.0.3968-Ubuntu.12-x86_64# ls
bin    kvm_backup_patch_install  kvm_backup_service        kvm_backup_service.service.debian  kvm_backup_watch_dog.s
conf   kvm_backup_patch_uninstall  kvm_backup_service.service  kvm_backup_service.service.old      kvm_backup_watch_dog.s
root@cvknode:~/vinchin-kvm-backup-patch-4.0.3968-Ubuntu.12-x86_64# ./kvm_backup_patch_install

```

Install Backup Node (Optional)

A backup node is an individual backup server without web console, it is managed by the web console of vinchin backup server.

In large virtualization environment with large volume of data, computing resources and network resources are limited. How to effectively backup the VMs and occupy the minimal resources, Vinchin adopts "multiple backup nodes" method.

Deploying multiple backup nodes in large environment can split the overall computing and storage resources in backup server to realize a horizontal expansion of the resources. Also doing backup concurrently from multiple backup nodes can increase the network transmission bandwidth exponentially and make your backup much faster.

Record Vinchin backup node ISO file [vinchin-node_enterprise-4.0.xxxx.iso](#) to USB disk or CD, detailed installation steps please follow chapter “Record ISO File”.

Note: There is no web console on backup node, all backup nodes are managed by the web console of backup server.

The backup node's IP address shall be different from the backup server, but make sure they are connected with each other.

After the backup node is installed successfully, you can login the backup node's OS to modify config files.

Backup node OS username: root Password : 12345678

```
CentOS Linux 7 (Core)
Kernel 3.10.0-514.6.2.el7.x86_64 on an x86_64

localhost login: root
Password:
[root@localhost ~]# _
```

Edit config file : [vi /etc/common_server.conf.xml](#)

```
[root@localhost ~]# vi /etc/common_server.conf.xml
```

Modify the [server_ip](#) and [database_ip](#) to Backup Server's IP address.

```
<?xml version="1.0" encoding="UTF-8" ?>
<common-server-conf>
  <install_path>/opt/vinchin</install_path>
  <server_ip>0.0.0.0</server_ip>
  <server_port>22710</server_port>
  <database_ip>0.0.0.0</database_ip>
  <database_port>3306</database_port>
  <database_name>vinchin_db</database_name>
  <database_user>vinchin</database_user>
  <database_passwd>yunqi123456</database_passwd>
  <storage_prefix>/backup_storage/</storage_prefix>
  <control_message_timeout>900</control_message_timeout>
  <server_key_name>/etc/vinchin/pt_server.key</server_key_name>
  <client_key_name>/etc/vinchin/pt_client.key</client_key_name>
  <certificate_pem>/etc/vinchin/certificate.pem</certificate_pem>
  <private_key_pem>/etc/vinchin/private_key.pem</private_key_pem>
  <log_dir>/var/log/vinchin</log_dir>
  <config_dir>/etc/vinchin</config_dir>
  <pid_dir>/var/run/vinchin</pid_dir>
</common-server-conf>
```

Enclose: vi editor often-used command

i Insert
esc Exit the editor
: wq Save & exit

Please reboot the backup node OS after you modify its config files : reboot

```
[root@localhost ~]# reboot
```

After rebooting the backup node OS, log in the backup server's web console with default **username : admin , password: 123456**. You can view the installed backup node information in the [Resources] → [Backup Node].

vinchin

Home Backup/Restore Resources Log/Alert admin

Dashboard

6.4Hours
System Uptime

3VMs

292.36GB

VM & Repository

VM-Protected VM-Unprotected

Used Space Free Space

CPU Usage

Network Flow

Virtual Infrastructure

Backup Repository

LAN-Free Settings

Backup Node

User Management

System Settings

System License

3Jobs
History

4Jobs
Current

2017-12-25 17:07:13

Job Monitor

Current Job

History Job

[Instant Recovery]VMware vSphereInstant Recovery1 Pending

[Backup]VMware vSphereBackup1 Pending 5 hour after

[Backup]VMware vSphereBackup2 Pending 4 day after

[Restore]VMware vSphereRestore1 Pending 4 day after

vinchin

Home Backup/Restore Resources Log/Alert admin

Backup Node

Node List

Edit Delete

Page 1 of 1 View 10 records per page Total 1 records

No.	Node Name	IP Address	Add Time	Remote Deploy	Deploy Status	Node Status
1	localhost.localdomain	192.168.101.42	2017-12-25 10:27:59	Unsupported	Deployed	Normal

Note: Please download the backup node installation package from the login page, follow the corresponding user guide to complete the installation. After install success, new backup node information will auto-add to the Node List. If you need support during the installation, please contact our technical support.



Contact Information

Head Office

F14, No. 19, 3rd Tianfu Street,
Hi-Tech Zone, Chengdu, China.
P.C. 610041

Sales

Tel: +86-28-85530156
Email: sales@vinchin.com

Support

Tel: +86-400-9955-698
Email: support@vinchin.com

Website

www.vinchin.com/en